



26 February 2021  
Issue 152

Pictured: Ann Ross RSW, *Blue, Bird*, waterbed medium & painted collage, from the 140th Annual Members' Exhibition of the Royal Scottish Society of Painters in Watercolour. See ARTS NEWS.





# ARTISAN



## SPRING MIXED EXHIBITION 6 FEB - 19 MARCH FEATURING IAIN MCINTYRE-YOUNGER & PENNY KENNEDY



13-15 BANK STREET, ABERFELDY PH15 2BB  
ANGELA@ARTISANAND.CO.UK WWW.ARTISANAND.CO.UK 01887 822 700 / 07703 733 230



THE  
MACLAURIN  
ART GALLERY

The Maclaurin Art Gallery  
Rozelle Estate,  
Monument Road,  
Ayr, KA7 4NQ

The Gallery remains closed just  
now in line with government  
lockdown restrictions.

The Maclaurin Trust  
is a Scottish Charity No:- 12798



Bevy of Swans by L Macdonald

## Online Exhibition 1st February - 29th March 2021



On the Edge by S Ratcliffe



Pair of Pears by N Moroney



loch an Eilean by C Mackay

The Ayr Sketch Club was founded in 1901 by local artists keen to share artistic knowledge and develop their skills, a tradition that 120 years on is continued by our artist members today. Our online exhibition offers a diverse and colourful selection of paintings for sale, with over 70 works on display.

The exhibition can be viewed on  
[www.themaclaurin.org.uk](http://www.themaclaurin.org.uk)

If you would like to purchase a painting from our online exhibition you will find a link on  
[www.themaclaurin.org.uk](http://www.themaclaurin.org.uk)  
to the Ayr Sketch Club.



THE BRUNTON  
THE PLACE TO B

## BRUNTON CLASSICAL ONLINE

Give yourself a break and beat the lockdown blues with our series of uplifting lunchtime concerts, combining irresistible music with virtuoso playing.

A series of three classical concerts streamed as live, for viewing at home, presented by The Brunton in partnership with Lammermuir Festival and Royal Conservatoire of Scotland



Maurizio Reyes  
PIANO

TUESDAY  
23 FEB  
PIANO  
RHYTHMS

TUESDAY  
2 MAR  
PRODIGES  
GROW UP



Abigail Young  
VIOLIN



Balazs Renczes  
CELLO

TUESDAY  
23 MAR  
THE MAGIC OF  
MENDELSSOHN



Graeme McNaught  
PIANO

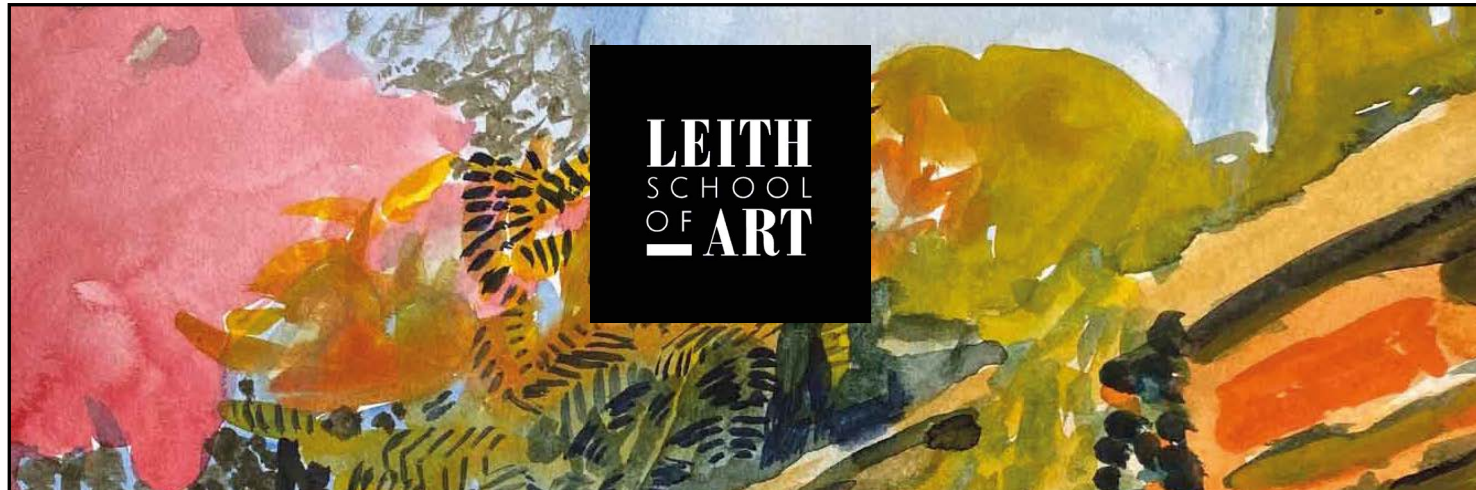


Resol String Quartet

Tickets: £7  
plus booking fee

Book at [thebrunton.co.uk](http://thebrunton.co.uk)  
0131 653 5245





LEITH  
SCHOOL  
OF ART

## YEAR-LONG COURSES

Apply online for courses starting September 2021

FOUNDATION | PAINTING | DRAWING  
CONTEMPORARY ART PRACTICE | FIGURE | LANDSCAPE  
ONE DAY PAINTING | PRINTMAKING



## SUMMER SCHOOL

Enjoy a creative week with high-quality teaching - 12 July - 20 August 2021

BEGINNERS | DRAWING & PAINTING | JEWELLERY  
CONTEMPORARY WATERCOLOUR | PORTFOLIO  
PRINTMAKING | YOUNG ARTISTS

www.LeithSchoolofArt.co.uk | Enquiries@LeithSchoolofArt.co.uk  
Leith School of Art, 25 North Junction Street, Edinburgh, EH6 6HW

### ARTS NEWS

A new digital exhibition has opened featuring 22 works from the City of Edinburgh's collection of Scottish art, which is housed in the **City Art Centre, Edinburgh: Our City** is an opportunity for viewers to explore the capital as it has been captured through the centuries by some of Scotland's most celebrated artists.

The show has been curated by Margaret Findlay of Museums and Galleries Edinburgh and features favourite works selected by members of the Front of House Team. These include Donald Provan's *Window View at Sighthill, Edinburgh*, chosen by Retail and Reception Assistant Patrick Vaughan as the view from his childhood window, and

**The Brunton** in Musselburgh is streaming a series of lunchtime concerts in partnership with the Royal Conservatoire Scotland and the Lammermuir Festival. The concerts are available for two weeks from each start date and are programmed with support from the Scottish Government's Performing Arts Venue Relief Fund through Creative Scotland.



Tues Feb 23: Piano Rhythms by Maurizio Reyes, including Bach suites, Hungarian folk-influenced music by Bartok, Spanish composer Granados' *Allegro de concierto* and capriccios by Brahms.

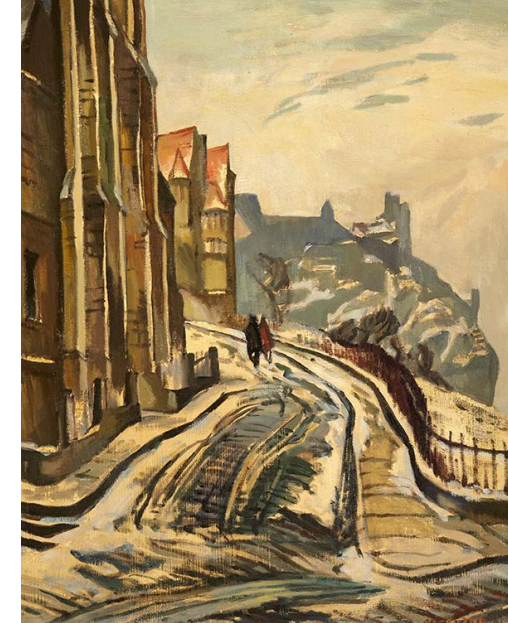
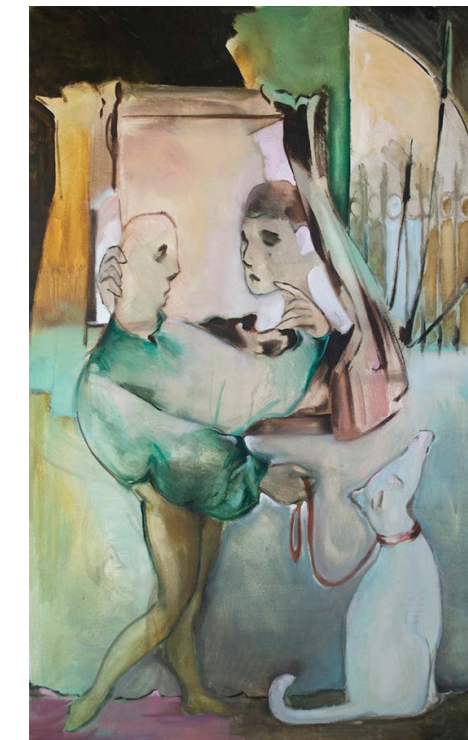
Tues Mar 2: Prodigies Grow Up by the Resol String Quartet (pictured), including romantic music by child prodigies Mozart (*Dissonance* quartet), Mendelssohn (A minor quartet, written when he was 18) and Philip Glass, whose hypnotic music has transcended pure classical music. **£7 plus £1.50 booking fee, www.thebrunton.co.uk, T 0131 653 5245**

William Crozier's *View from the Mound, Edinburgh, Looking West* (pictured), chosen by Visitor Assistant Lynn Fulton, who said: "Painted 100 years ago, this painting has a timeless quality that resonates with today's lockdown. Before Covid this view would be busy, with people marvelling at the views while meandering their way up to the castle. One year later, during a snowy January, this iconic setting is quiet and deserted."

Other depictions include *Caley Station, Edinburgh* (1942) by Edwin George Lucas, *The Port of Leith 1824* by Alexander Nasmyth and *Leith Races* by William Thomas Reed. [www.artuk.org/discover/curations/edinburgh-our-city](http://www.artuk.org/discover/curations/edinburgh-our-city)

Launching the 2021 programme at **Tatha Gallery** in Newport-on-Tay, **The Graduates: Four Pillars** (Feb 27-Apr 3) showcases painting, drawing, printmaking, textiles, sculpture and ceramics by three recent graduates from each of Scotland's four main art colleges: Duncan of Jordanstone College of Art & Design, Edinburgh College of Art, Glasgow School of Art and Gray's School of Art.

Due to the pandemic many final year students were unable to complete their degree work or display it at the usual end of year degree shows, so kudos to Tatha Gallery for providing these emerging artists



with an opportunity to expose their work to a new audience. Pictured: George Williams (Edinburgh College of Art), *Encounter*, oil on canvas [www.tathagallery.com](http://www.tathagallery.com)

The **Royal Scottish Society of Painters in Watercolour** (RSW) has launched its first online exhibition, featuring more than 70 paintings by some of Scotland's top artists. The RSW had planned to stage its 140th Annual Exhibition at the Kirkcudbright Art Gallery, but Covid-19 restrictions have required it to be moved online.

The show includes landscapes, portraits, wildlife studies and abstract works, all of which are for sale. Many of them reflect a year spent in lockdown, with some artists painting the places immediately around them, from Skeabost on Skye to the Solway Firth, while others have dreamed of places they have been unable to visit, from Venice to Tokyo to Zanzibar. Pictured: Anthea Gage, *Graceful Flight* [www.rsw.org.uk](http://www.rsw.org.uk)





RSW

THE ROYAL SCOTTISH SOCIETY OF PAINTERS IN WATERCOLOUR

### The 140th Annual Exhibition of the Royal Scottish Society of Painters in Watercolour

19 Feb - 19 April  
www.rsw.org.uk/digital-exhibition

Browse more than 70 works by some of Scotland's top artists in the RSW's first online exhibition.



Cuban Mist George Donald

### ARTS NEWS

**A** Focus on Sculpture at **Compass Gallery** in Glasgow is an all too rare opportunity to see specialised sculpture, especially of small scale works. Compass has a long history of including sculpture in its exhibition programme, with past shows featuring works by New Generation artists along with well known names such as Sir Anthony Caro, Dame Elizabeth Frink, Anne Christopher, Anna Maria Pacheco, Belinda Rush Jansen, James Castle and many others who had not yet exhibited in Scotland.

This online selection highlights a range of ideas and styles in bronze, wood, stone and other materials on a domestic scale – ideal for sculpture-lovers with limited space. Pictured: Andy Scott, *Heavy Horse*, bronze  
[www.compassgallery.co.uk](http://www.compassgallery.co.uk)

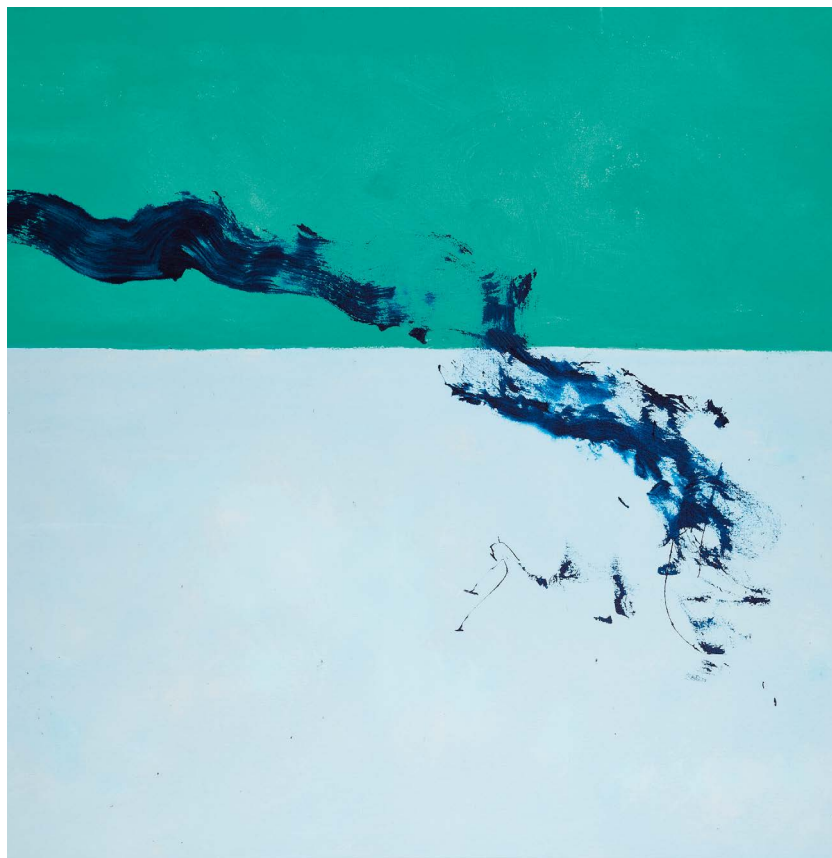


**Academicians in Isolation II** at the **Royal Scottish Academy** in Edinburgh (until Mar 14) is the second part of an online exhibition of new works by RSA members created during lockdown. Pictured: Wendy McMurdo RSA (Elect), *Nature Study (Gannet)*, C-type mounted on dibond. Also showing is *Latitudes* (until Mar 17), featuring recent work by recipients of the RSA Barns-Graham Travel Award, the RSA David Michie Travel Award and the RSA William Littlejohn Award along with a selection of RSA Pandemic Award artists.  
[www.royal.scottishacademy.org](http://www.royal.scottishacademy.org)



**Jenny Matthews: Rainbow** at Edinburgh's **Union Gallery** (Mar 1-31) features floral studies by the award-winning watercolourist. The gallery's website includes a link to a video shot in the artist's studios in which she demonstrates some of her techniques and discusses her materials. Pictured: *Deep Purple Cornflower* [www.uniongallery.co.uk](http://www.uniongallery.co.uk)

After a four-year hiatus, **Paisley Art Institute** is calling for entries for the return of the Scottish Drawing Competition. Subject to Covid-19 restrictions, the selected works are due to appear in an exhibition in June. Artists can submit one artwork each with an application fee of £10. Prizes range from £100 to £500 and the closing date for entries is March 31. Pictured: Lesley Banks PAI, *Misty Ardishaig*, winner of the Walker Laird Prize at the 2017 Scottish Drawing Competition  
[www.paisleyartinstitute.com](http://www.paisleyartinstitute.com)



### FORTHCOMING AUCTIONS

A CELTIC VISION: A Private Collection of Scottish Paintings | 25 FEB

Jewellery, Watches & Silver | 09 MAR

Paintings & Works on Paper | 10 MAR

Contemporary & Post-War Art | 07 APR

Design since 1860 | 21 APR

Select Jewellery & Watches | 22 APR

Lalique | 29 APR

Modern Made: Modern British & Post-War Art, Design & Studio Ceramics | 30 APR

African & Oceanic Art & Antiquities | 05 MAY

CLEVE GRAY (AMERICAN 1918-2004)  
HALEYS COMET [DETAIL] | To be auctioned 07 April

LYON & TURNBULL  
AUCTIONEERS SINCE 1826

0131 557 8844 | [www.lyonandturnbull.com](http://www.lyonandturnbull.com)



EION STEWART  
FINE ART

*Serendipity*  
Mixed Spring Exhibition

Ann Oram RSW  
Andrea Elles  
Anna Malyon  
Andy Cross  
Diane Gardner  
Fiona Sturrock  
John McClenaghan  
John Hall  
John Paul Raine  
Morag Stevenson  
Siobhan O'Hehir  
Victoria Broxton

55 Allardice Street  
Stonehaven

www.eionstewartfineart.com  
art@eionstewartfineart.com  
01569 785606

## A TIME AND A PLACE

Scottish artist Alexander Millar's new portfolio of work places his romantic Youth and Young Manhood characters at the heart of iconic scenes in the cities he loves.



Order online [alexandermillar.com](http://alexandermillar.com) or  
[info@alexandermillar.com](mailto:info@alexandermillar.com)

Princes Square  
Buchanan Street  
Glasgow  
0141 221 7565



55-59 Grey Street  
Newcastle  
upon Tyne  
0191 230 4440



## Analysing a Masterpiece

J.M.W. Turner (1775-1851), *The Eruption of the Soufrière Mountains in the Island of St Vincent, 30 April 1812*, painted in 1815, oil on canvas, courtesy of the Victoria Gallery & Museum, University of Liverpool

Scientists continue to monitor increased seismic activity at La Soufrière volcano on the Caribbean island of St Vincent, which could erupt at any time. The last major eruption of St Vincent was in 1979,

while the previous eruption, in 1902, killed over 1,500 people.

Before that there was the eruption of 1812. While there are, of course, no photographs of this earlier scene of destruction, we do have a painting of it by

J.M.W. Turner, arguably the greatest British artist.

Turner presents us with spectacular pyrotechnics of flames and molten lava shooting upwards, lighting up the night sky and the billowing clouds of sooty smoke. Scorching missiles fired from the crater flare then fall. The foreground is silhouetted against dazzling light and we see a small boat ferrying a few vulnerable souls away from the deadly assault. It is a scene both sublime and terrible.

Even more startling perhaps is that Turner was nowhere near the Caribbean. In fact, he painted it in his studio, taking his inspiration from what he described as a 'sketch' by Hugh Perry Keane, who owned a sugar plantation (and slaves) on the island. Keane kept a diary of the eruptions and earthquakes which ▶▶▶



resipole studios FINE ART GALLERY



John Paul Raine  
www.resipolestudios.co.uk  
loch sunart | acharacle | argyll | ph36 4hx  
worldwide shipping available

OWN ART

27 Feb – 3 April  
tathagallery.com

# The Graduates: Four Pillars

Updates Online

TATHA GALLERY

continued for several months. Records indicate that 34 enslaved people died as a result of the seismic activity and ensuing floods.

It is not clear how Turner came across Keane's records, although other accounts of the eruption were published in Britain. Many miles away and three years later, Turner revealed his painting at the 1815

Royal Academy exhibition with the less than snappy title: *The eruption of the Souffrier Mountains in the Island of St Vincent, at midnight, on the 30th of April 1812, from a sketch taken at the time by Hugh P. Keane, Esq. "There in stupendous horror grew etc"*

It is not presumed that Turner was making a comment on slavery in this

## ANATOMY OF A PAINTING

painting, although he made his anti-slavery views known in later works, especially *Slave Ship* of 1840, which is in the collection of the Museum of Fine Arts, Boston. That painting is based on a recorded atrocity of 1781, when 132 enslaved Africans were thrown overboard to certain death.

*The Eruption of the Soufrière Mountains* was presented to the University of Liverpool,

**Turner presents us with spectacular pyrotechnics of flames and molten lava shooting upwards, lighting up the night sky and the billowing clouds of sooty smoke.**

of which Victoria Gallery & Museum is a part, in 1948 and it is the most famous artwork in their collection. Much travelled to international exhibitions, it has its own custom-built crate covered in exotic freight labels.

The painting currently hangs in the gallery in an exhibition called Nature v Humans, ready for when visitors can visit again.

[www.vgm.liverpool.ac.uk](http://www.vgm.liverpool.ac.uk)





J.M.W. Turner bequeathed his own collection to the nation and this large body of work is held in London's Tate Britain. Highlights from the 160 or so works include *The Battle of Trafalgar* (1806-8), *The Burning of the Houses of Lords and Commons* (1835), *The Fighting 'Téméraire'* (1839) and *Rain, Steam and Speed – the Great Western Railway* (1844, pictured).

The **National Galleries Scotland** also own 38 watercolours by Turner, which are traditionally shown once a year in the exhibition *Turner in January* during a month of low light levels to avoid damaging the works.

LEX MCFADYEN & MADELEINE HAND

# 40 YEARS IN THE MAKING

THE GLASGOW GALLERY

VIEW EXHIBITION

Continues online until **13 March**

WE CONTINUE TO REMAIN OPEN ONLINE PLEASE STAY SAFE – WE LOOK FORWARD TO WELCOMING YOU TO THE GALLERY IN 2021  
182 BATH STREET GLASGOW G2 4HG 0141 333 1991 INFO@GLASGOWGALLERY.CO.UK WWW.GLASGOWGALLERY.CO.UK

Goldfinch Gallery COMRIE



Liz Kemp  
Solo Exhibition  
5 March - 16 April

[www.goldfinchgallery.co.uk](http://www.goldfinchgallery.co.uk)  
[info@goldfinchgallery.co.uk](mailto:info@goldfinchgallery.co.uk)  
Drummond Street, Comrie, Perthshire, PH6 2DS

DOCK STREET STUDIOS

9 Dock Street, Dundee, DD1 4BT.  
Open Monday to Saturday, 10-4pm



Unique Gifts, Artists, Makers, Exhibitions & Events



# Dutch delight

The north Holland province of Friesland gave the world several major artists

Previously awarded only to cities, in 2018 European Capital of Culture status was given for the first time to an entire province, when Friesland in the north of Holland took the opportunity to shed its self-image as small and isolated and celebrated the Friesian tradition of 'mienskip', which translates as a sense of community and an openness to cultural and social diversity.

In the process it reminded the world that three great names in art and design have local connections: the perspective-bending graphic artist M.C. Escher, the Friesian house painter turned artist Piet Mondriaan (he later dropped an 'a' in favour of the more French-sounding Mondrian) and the founder of 'De Stijl' movement Theo van Doesburg.

## Leeuwarden

With an entry in the Guinness Book of World Records for the most possible spellings of its name, Leeuwarden is the provincial capital.

The glass-fronted, light-filled **Fries Museum** holds around a million objects dedicated to the art, craft and history of the region from 1200 onwards. When it opened in

2013, the modern, angular building on the city centre Wilhelminaplein ('plein' is Dutch for square) was the first newly constructed Dutch museum building of the 21st century. It is a past winner of the the Global Fine Art Award, sometimes nicknamed the Museum Oscar, for an exhibition on the locally born painter Lawrence Alma-Tadema, who specialised in depictions of Classical antiquity.

The wide-ranging collection includes spectacular treasures excavated from ancient Frisian mounds, 17th and 18th century Frisian silverware, Old Masters paintings and work by 20th century Frisian artists. The Mata Hari Room is dedicated to the life of the dancer and spy, who was born in 1876 in Leeuwarden as Margaretha Zelle. There is also a regular programme of special exhibitions. [www.friesmuseum.nl](http://www.friesmuseum.nl)

The Dutch national ceramics collection is held in Leeuwarden's **Ceramic Museum Prinsessehof**, a former palace which was the home of M.C. Escher during his time there. (One of his sculptures is on the outside of the building.) Ceramics have traditionally been produced in Friesland, where the necessary clay, fuel and transportation are available in abundance.

As well as showing what may be considered classic works, the museum sets out to broaden the public perception of ceramics. For example, a previous exhibition, *Sexy Ceramics*, celebrated erotica in ceramics old and new. Another exhibition, *Migrating Ceramics*, told the story of how the Dutch East India Company introduced porcelain to the Netherlands around 1600. ▶▶▶

## Nienke Brokke's design for a 100-metre dike

Artist and art entrepreneur Joop Mulder took on by far the largest European Capital of Culture project. Along with over 30 artists and architects, he is overseeing *A Sense of Place*, a 180-kilometre ribbon of landscape art, architecture and ecological works stretching along the Wadden Sea coast.

Work began in 2018 and the 50 or so works are expected to take up to five years to complete. They will include a 100-metre green dike with the contours of a voluptuous nude woman (pictured), salt marshes designed like a Mondrian painting and a giant mirror ball atop a wooden tower on a dike reflecting the landscape in all directions.

This coastal area of entirely reclaimed land is said to be the first landscape created by man, and at less than a hundred years old is the youngest World Heritage Site in the world. [www.sense-of-place.eu](http://www.sense-of-place.eu)





Fries Museum

only for the Dutch to make their own, less expensive version, often in factories in and around Delft, and sell it back to the rest of the world. Other selections demonstrate how contemporary artists have embraced ceramics not just as an applied art form, but a fully-fledged artistic medium.

[www.prinsessehof.nl](http://www.prinsessehof.nl)

All of the eleven main towns in Friesland renovated their main squares as part of **11 Fountains**, a Capital of Culture project for which each community installed a new fountain, symbolising the province's long tradition of "taming" water. Each fountain was designed by a different international artist in consultation with the locals and each was activated by its designer.

Unsurprisingly, the fountains are barely recognisable as such. In the town of Sneek, for example, German artist Stephan Balkenhol's *Fortuna Fountain* is a figure of a well dressed man holding the Horn of Plenty while trying to balance on a rotating ball. For Sloten, the British-Argentinian couple Lucy and Jorge Orta created *Kievit Fontein* (*Lapwing Fountain*), which depicts a man standing on a tall stack of water vessels with a boy on his shoulders holding a lapwing.

Stephan Balkenhol (Germany), *Fortuna Fountain*, Photo: Team Horsthuis

And in Leeuwarden, Spanish artist Jaime Prensá's *Love* shows two giant children's heads, their eyes closed in dream. When activated, a thin cloud of spray plays around the foot of the fountain to evoke water evaporating from the ground on a Dutch morning.

Protesting that no Friesian artists were commissioned to design a fountain, local



artists came up with their own. *The Pauper Fountain* was made of wooden phalluses – hence its nickname, the 'penis fountain' – at the centre of which was a WC in which visitors were invited to relieve themselves and watch their urine spout for (Contributors to a crowdfunding campaign could sponsor their own penis.) Said the project's originator Henk de Boer: "What the artwork is about is how the bullies and big dicks forget that they can't do anything without the little dicks. This is how society actually works." [www.11fountains.nl](http://www.11fountains.nl)

### Drachten

Some 35 kilometres southeast of Leeuwarden, the town of Drachten is closely associated with 'De Stijl' movement, founded locally in 1917 by two pioneers of abstract art, Theo van Doesburg and Piet Mondriaan. The movement inspired many artists, including Richard Hamilton and Eduardo Paolozzi.

Considered Holland's most important contribution to 20th century design, De Stijl advocated pure abstraction and reduction to the essentials of form and colour. It is characterised by a combination of black, white, grey and primary colours and straight horizontal and vertical lines. (Mondriaan later withdrew from De Stijl following van Doesburg's adoption of diagonal

elements in his work!) The movement's central theme – How can design shape the society of the future? – has been taken up by today's Dutch designers, who continue the tradition of blending form and function.

For another art movement, though, Drachten was the scene not of its birth, but of its demise. While commonly linked with Zurich, Dadaism was active in Drachten through the likes of Kurt Schwitters and the shoemaker-artist brothers Thijs and Evert Rinsema. The movement also officially ended in Drachten, when Schwitters held the group's final soiree.

The **Museum Drachten** (or Museum Dr8888, playing on the Dutch for 'eights') has a large collection of works from the De Stijl and Dada movements as well as a post-WWII collection of Friesian Expressionism by the artists' group Yn 'e Line.

[www.museumdrachten.nl](http://www.museumdrachten.nl)

Nearby you can walk *into* a De Stijl artwork, namely the **Van Doesburg-Rinsema House**, a complete and faithfully restored 1921 house and part of an entire row of such houses creating a unique street scene in



Part of a row of houses in Drachten for which 'De Stijl' pioneer Theo van Doesburg created the colour design

the village. The colour design was by Theo van Doesburg, his first big commission. He viewed a room like a 3D painting, with a harmony of colour to make its inhabitants feel more harmonious. Guided visits are by advance booking from Museum Drachten.

[www.museumdrachten.nl/museum-house/?lang=en](http://www.museumdrachten.nl/museum-house/?lang=en)



Originally built in 1909, the fully restored sailboat *De Jonge Trijntje* sports De Stijl's iconic design. It can be hired for a Stijl-ish day on the water.

From the exhibition *Migrating Ceramics* at the Ceramic Museum Prinsessehof



# Ann Armstrong



Glencoe Winter Clouds 60 x 60cm

Scottish landscape painter  
[www.ann-armstrong-art.co.uk](http://www.ann-armstrong-art.co.uk)

## Spring awakening

### The Line Gallery



Damian Henry



Morag Stevenson



Shona Young



Siljes Elisabet Thorn

Feb 24 to  
 April 26

238 High St. Linlithgow EH49 7ES 01506 670268  
[all@thelineonline.co.uk](mailto:all@thelineonline.co.uk) Follow us on facebook

## ART & TRAVEL



A sculpture by Leeuwarden-born M.C. Escher on the wall of the Ceramic Museum Princessehof

Leeuwarden-born **M. C. Escher** made his name with his graphic explorations of infinity, reflection and perspective. He once said: "I could not resist fooling around with our established certainties". Hence in his graphics stairways lead neither up nor down, a floor appears to be a wall and water seems to flow upwards. In perhaps his best known

work, *Day and Night*, white birds flying into daylight merge with black birds flying in the opposite direction into night, all merging with the fields below.

Escher was rediscovered by the 1960s pop generation and posters of his work became a common sight in student flats, sometimes

with a new title, as with *Dream*, which was renamed – wait for it – *Bad trip*.

Escher once turned down a request from Mick Jagger to design a Rolling Stones album cover, citing a heavy workload. In a letter to the singer's representative he wrote: 'Please tell Mr Jagger I am not Maurits to him.' Ouch.

## Maisie & Mac

Gifts, Art & Contemporary Craft



prints . ceramics . textiles . paintings  
 metalwork . woodwork . glass . clocks  
 cards . kits . jewellery . lights . throws

1 St. Catherine St., Cupar, Fife, KY15 4LS  
 2 High St., Dundee, DD1 1SX  
[www.maisieandmac.com](http://www.maisieandmac.com)



Mixed online exhibition with featured artist:

**Erraid Gaskell** 27 Feb - 20 Mar



[www.galleryq.co.uk](http://www.galleryq.co.uk) Queen's Hotel Buildings, 160 Nethergate, Dundee DD1 4DU 01382 220600

Gallery  
 Dundee Q

OWN  
 ART

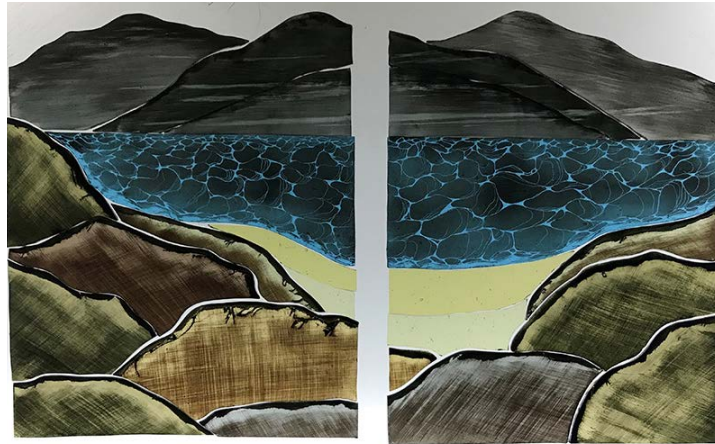
A Friesian horse head in peat by Dioni Ten Busschen



Local artist **Dioni Ten Busschen** also takes inspiration from the land – in her case, literally. Her medium of choice is peat, which she uses to model an array of objects, including vessels, sculptures, furniture and wall hangings. She has also made a nearly life-size Friesian horse, one of those majestic, all-black beauties with lush tails and manes and feathered feet of which Friesians are particularly proud. (No, it's not cows.) A statue of one in Leeuwarden is a popular meeting point. [www.peatart.com](http://www.peatart.com)

Further info: [www.friesland.nl](http://www.friesland.nl)





**Stephanie Whatley** of Biggar Glass Works makes one of a kind stained glass window panels, flora and fauna pieces, sculptures and other decorative items. She says: "There is something mystical about glass. Static, yet ever changing. It has its own mind. Did you know it is actually classified as a liquid?" [www.stephaniewhatley.com](http://www.stephaniewhatley.com)



A member of Perthshire Artisans, **Cornelia Weinmann** combines 'slow fashion' with upcycling to hand-tailor linen jackets and tops decorated with colourful appliques made from repurposed fabrics. Each garment is unique, and the decorations reflect Cornelia's background in printmaking and painting. Customers can provide their own fabrics for the appliques. [www.corneliaweinmandesign.com](http://www.corneliaweinmandesign.com)

# Hand-made

for you & your home



Skye-based **Uig Pottery** specialises in functional ceramic pieces inspired by the natural beauty of its scenic location. Visitors can watch as resident artisans create distinctive stoneware by hand or paint pots ready for firing. There is a retail area in the workshop as well as a shop in Portree. [www.uigpottery.co.uk](http://www.uigpottery.co.uk)



A member of Edge Textile Artists Scotland, **Helen Hill** is inspired by nature. Her recent work focuses on coastlines, where land meets sea and there is a freedom and wildness set against the tranquillity and protection of the sheltering harbours. She collects shells, pebbles, seaweed and flotsam to use in her assemblages. [www.edge-textileartists-scotland.com/edge-artists/helen-hill](http://www.edge-textileartists-scotland.com/edge-artists/helen-hill)



Basketmaker **Tim Palmer** admits to a low-tech approach to life, perfect for the sustainable ideologies of working in willow. His work focuses on traditional styles and methods and in recent years he has become interested in regional techniques and traditions, recreating several historical baskets relating to the fishing and aviation industries. [www.timpalmerbasketmaker.co.uk](http://www.timpalmerbasketmaker.co.uk)



A member of Perthshire Artisans, **Laura Grace Caldwell** works in silver and polymer clay to make bold and colourful jewellery for statement wear or everyday wear. She says: "Your jewellery plays a part in what you say about yourself to the world. I always design and make with this idea at the forefront." [www.wearwithgracestudio.com](http://www.wearwithgracestudio.com)



# Seascapes

More and more, the cruise ship industry is embracing art to attract customers

In Part 2 of our feature on Art Cruises we look at further examples of cruise ships as 'floating art galleries'. To see Part 1 go to: [www.artmag.co.uk/magazine/artmag-147/#page=21](http://www.artmag.co.uk/magazine/artmag-147/#page=21)

The French cruise line **Ponant** has an Art at Sea initiative which offers permanent and travelling exhibitions throughout its fleet, including Le Bougainville, L'Austral (which featured 30 works by Pierre Soulages, the second artist after Marc Chagall to be exhibited in the Louvre during his lifetime) and Le Jacques-Cartier, where the French graffiti artist Shuck One hid a new diptych on the steel hull of the ship during its construction in 2019. On the theme of oceans and nature, the work was covered up when the ship was fitted out, leaving it partly visible through a porthole.

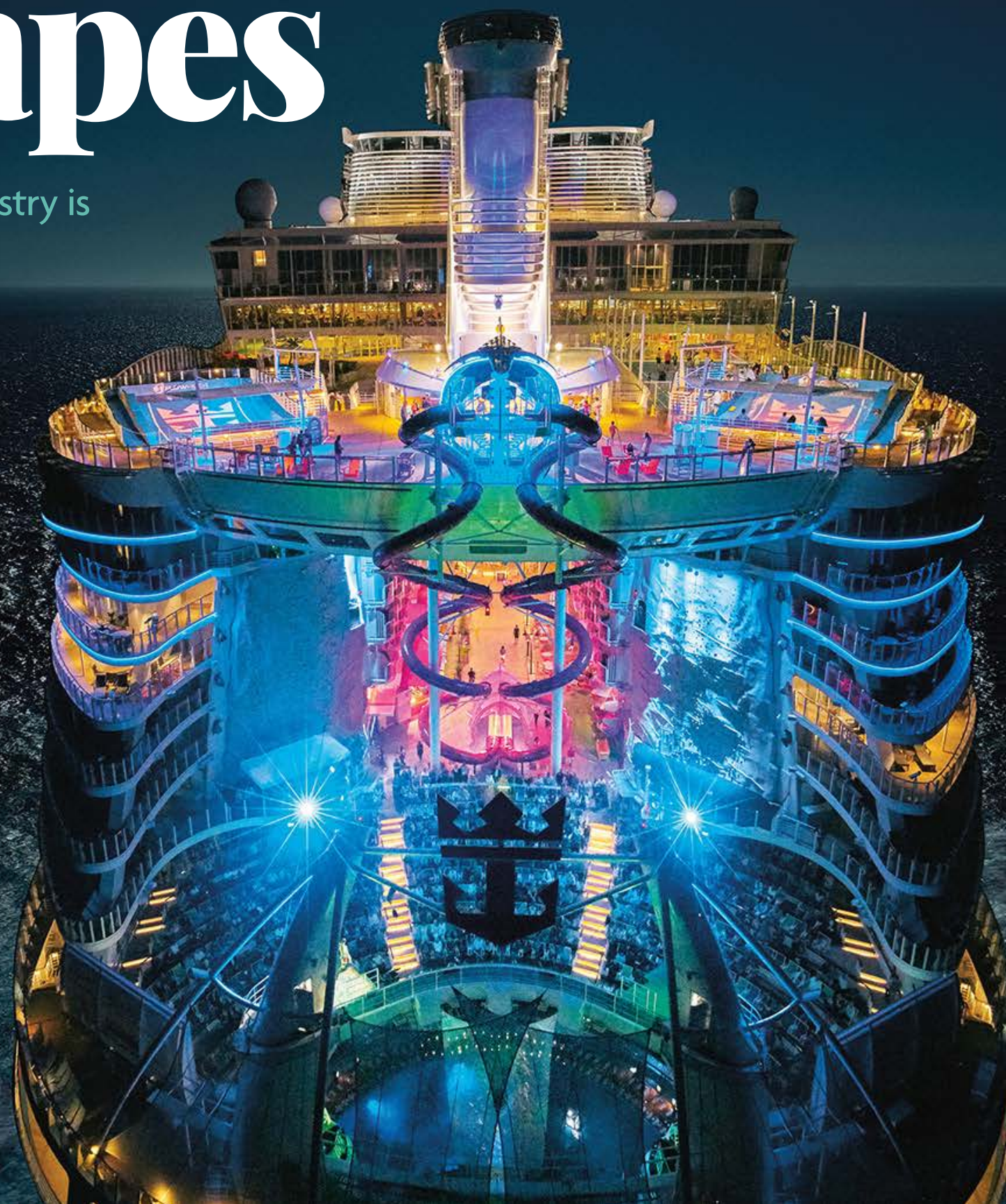
[www.uk.ponant.com](http://www.uk.ponant.com)

Curated by ArtLink (See BOX), the Costa Smeralda by **Costa Cruises** has an art collection which celebrates its Italian roots, from Roman architecture to Renaissance painting to Milan's fashion runways. Their spin on the 'dolce vita' even includes cheeky, digital reworkings of 15th century portraiture.

[www.costacruises.co.uk](http://www.costacruises.co.uk)

**MSC Cruises** has an immersive art and dining experience on board the MSC

A drone shot of the illuminated stern of Royal Caribbean's Harmony of the Seas, which hosts art collections and auctions



Grandiosa. Housed in a purpose-built installation in L'Atelier Bistro on the ship's Mediterranean-style Promenade, the Degas Danse Dessin exhibition features 26 Degas studies of movement and dance which were previously exhibited in galleries and museums. The works encapsulate the romantic soul of Paris in keeping with the French-themed bistro.

Featuring five videos running alongside the artwork and highlighting details of Degas' work and life, the presentation was created by The Aimes, experts in creating multi-sensory, interactive experiences using new media and technology. [www.msccruises.co.uk](http://www.msccruises.co.uk)

The biggest cruise ship in the world, the 9,000-passenger Symphony of the Seas operated by **Royal Caribbean**, has over 13,000 works valued at some \$8 million.

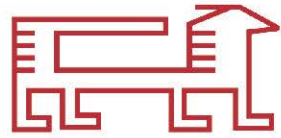
Royal Caribbean has teamed up with US-based Park West Gallery, reputedly the largest art dealer in the world, to fill some of its ships with contemporary and classic art and to host auctions of work from the collections. Proceedings start with a complimentary champagne toast in the on board art gallery before the ship's interior is spectacularly illuminated and the bidding begins. The auctions are newcomer-friendly to put first-time bidders at their ease.

[www.royalcaribbean.com](http://www.royalcaribbean.com)





WWW.NOMADSTENT.CO.UK



THE **NOMADSTENT**  
A WAREHOUSE OF TRIBAL ART

RUGS & INTERIORS

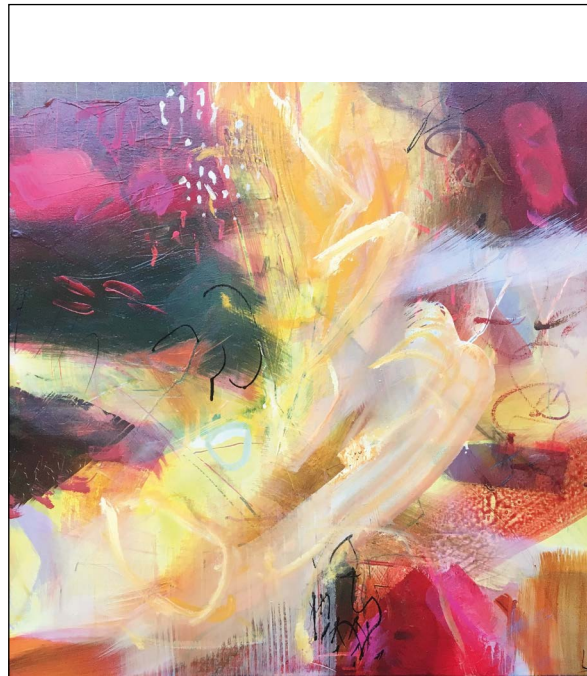


**FREE UK DELIVERY ON ALL RUGS!**



**WE BUY & SELL CLEAN & REPAIR**

Tues-Sat 10-5, Sun 12-4  
21 St Leonard's Lane, EH8 9SH  
info@nomadstent.co.uk, 0131 662 1612  
WWW.NOMADSTENT.CO.UK



*Crimson and Yellow / Lesley Birch*

**WFG**  
White Fox Gallery

**COLOUR and BALANCE**

**Rescheduled from March to May**

51 High Street, Coldstream TD12 4DL. 01890 254 010 or 07980 402 755  
www.whitefoxgallery.co.uk info@whitefoxgallery.co.uk  
Tues-Sat 10am-5pm. Wed by appointment



Glasgow's newest creative space.

We are open for takeaway coffee, food, artwork & more!

We would also like to thank everyone for the continued support.

Watch this space for events & exhibitions once restrictions allow.

**10-5pm MON-SUN**

www.alchemyexperiment.com

157 Byres Rd. Glasgow G12 8TS

**ART CRUISES**



French graffiti artist Shuck One's partly hidden diptych on the hull of Ponant's Le Jacques-Cartier

Park West Gallery has also worked with **Celebrity Cruises** to install an interactive touch screen art wall on board the Celebrity Edge. The wall enables passengers to view Park West's huge art collection, watch videos and

learn more about the featured artists. Celebrity Edge also has Park West's Museum at Sea, which includes works by the likes of Picasso and Dali.  
**www.celebritycruises.co.uk** ▶▶▶



Creating the Degas Danse Dessin presentation for MSC Cruises' Grandiosa



**PACK SEND**

**SPECIALIST SHIPPERS OF FINE ART & ANTIQUES**

- Fragile, large or awkward – wherever in the world it needs to go
- Affordable, customised crates that deliver art works safely
- International & UK delivery services
- Cover against loss or damage

0131 201 2244

53 Elm Row, Leith Walk, Edinburgh EH7 4AH  
[www.packsend.co.uk/edinburgeast](http://www.packsend.co.uk/edinburgeast)

**ESCAPE**

ONLINE ONLY EXHIBITION FOR 2021  
 FEATURING ORIGINAL ARTWORKS FROM TWENTY ARTISTS

GOES LIVE ON SATURDAY 30TH JANUARY  
[WWW.WHITEHOUSEGALLERY.CO.UK](http://WWW.WHITEHOUSEGALLERY.CO.UK)

**GALLERY 2**

**Winter Exhibition Online**

Offering a complete range of mouldings, original art, limited editions and unique gifts. Plus contract picture framing for hotels, pubs and restaurants.

72 John Finnie Street, Kilmarnock  
 01563 550 303 | [Gallery2Kilmarnock](https://www.gallery2kilmarnock.co.uk)  
[www.gallery2kilmarnock.co.uk](http://www.gallery2kilmarnock.co.uk)

**HIGH ST. GALLERY**  
 ART & ANTIQUES

High St. Gallery 84 High Street Kirkcudbright  
 DG6 4JL 07807 235 196  
[www.highstgallery.co.uk](http://www.highstgallery.co.uk) | [contact@highstgallery.co.uk](mailto:contact@highstgallery.co.uk)

**CURRENTLY VIEW ONLINE ONLY**

**ART CRUISES**



Part of Park West's Museum at Sea on the Celebrity Edge

The **Norwegian Cruise Line** has taken devotion to art a step further by commissioning artists to paint the massive hulls of its ships. For the Norwegian Bliss the company turned to

the American ocean wildlife artist and conservationist Wyland to paint life-size whales and other marine life on the prow, as if leaping from the water as it speeds along. [www.ncl.com](http://www.ncl.com)



Marine wildlife by Wyland on the hull of the Norwegian Bliss

Prada Girl by Dorothee Golz is an example of digitally reworked classical portraiture on the Costa Smeralda.





# ADVERTISE WITH US!



**40% DISCOUNT DURING LOCKDOWN!**  
**ENQUIRIES: 07968 191032**  
**publisher@artmag.co.uk**

## aberfeldygallery

AUDREY SLORANCE

13 Feb - 29 March VIEW ONLINE



Contemporary art by established and emerging Scottish artists. Large variety of landscape and wildlife art - ranging from representational to impressionistic - and a good selection of Perthshire scenes.

FREE UK DELIVERY

aberfeldygallery.co.uk

9 Kenmore Street, Aberfeldy, PH15 2BL  
 07821 103011  
 hello@aberfeldygallery.co.uk

**SPROSON GALLERY & FRAMERS**  
 ST ANDREWS

### A Scottish Winter Collection

*Jen Colliee, Seasons Songs*

View online

138 South Street  
 St Andrews, KY16 9EQ  
 01334 474331  
 info@sprosongallery.com  
 www.sprosongallery.com  
 sprosongallery

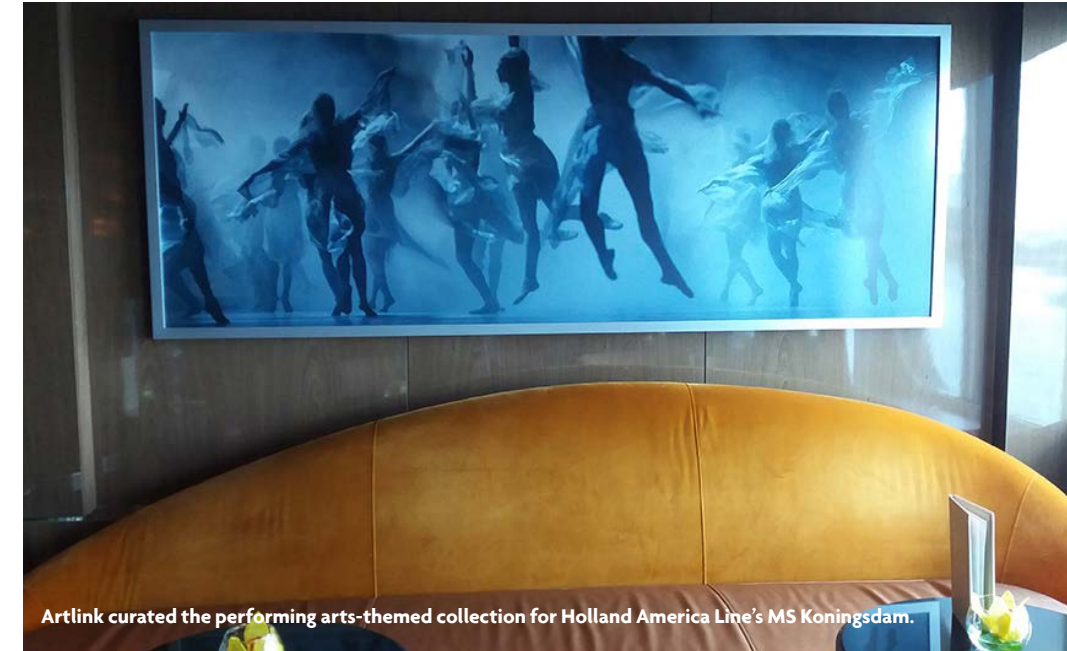
A contemporary art gallery in St Andrews

## ART CRUISES

### CRUISE CURATORS

Drawing on one of the world's largest international artist networks, **ArtLink** (slogan: 'We Art the World') acquires and curates artworks for cruise ship projects, including Seabourn Cruises' Ovation and Encore, Holland America Line's MS Kongingsdam and MS Nieuw Statendam and Costa Cruises' Costa Smeralda. ArtLink has also worked with luxury hotels in over 30 countries, including the Mandarin Oriental Hyde Park in London, the Four Seasons DIFC in Dubai and the Plaza Hotel in New York.

Possibly the world's leading buyer of work by young and emerging artists (ArtLink founder Tal Danai claims that some 90 per cent of art sold on the open market is by new artists), the company works with over 4,000 artists and has access to 150 art schools worldwide. In the last decade alone, they have purchased and placed over 350,000 artworks.



Artlink curated the performing arts-themed collection for Holland America Line's MS Koningsdam.

Works are often acquired based on individual cruise line themes, such as journeys to imaginary places to reflect Seabourn's exotic destinations or performing arts for the Holland America

Line for whose newest ship, the MS Rotterdam, ArtLink is creating ideas ahead of its June delivery.

**www.artlink.com**

## FRAMES GALLERY



Elsie by Helen Fay Winter 2020 Mixed Exhibition

21st November—27th March

paintings, printmaking, ceramics, jewellery and glasswork

10 Victoria Street Perth PH2 8LW | framesgallery.co.uk | info@framesgallery.co.uk | 01738631085

**dockside GALLERY**

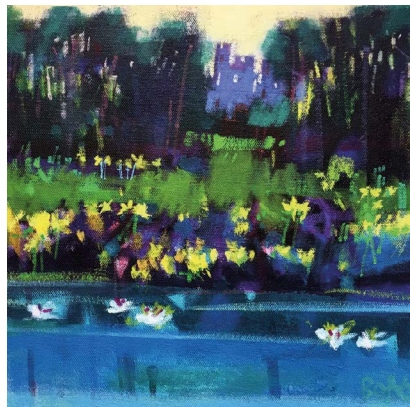
Jenny Wilson  
*By the Sea of Finistere (Detail)*  
 01289 302437 | art@docksidegallery.co.uk  
 84 Main St, Tweedmouth, Berwick-upon-Tweed TD15 2AA







# MILTON ART GALLERY



First Daffodils Ury – Francis Boag

Visit our website or view our social media pages during lockdown



Crovie – Kanita Sim

Milton of Crathes, Banchory AB31 5QH  
info@miltonart.com  
01330 844 664  
www.miltonart.com



Autumn at Dalquahandy Farm – Deborah Phillips

GALLERY HEINZEL  
CONTEMPORARY ART

ONLINE WINTER EXHIBITION  
until March 27

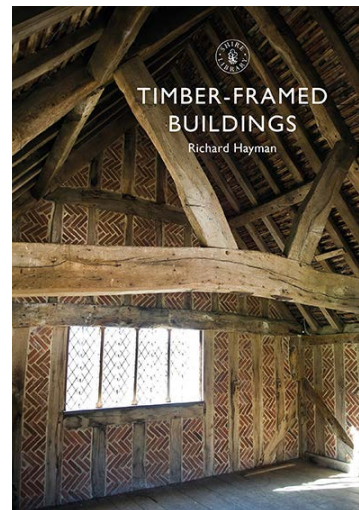
Art advice, selection and delivery service

24 Thistle Street, Aberdeen AB10 1XD 01224 625629  
info@galleryheinzell.com www.galleryheinzell.com

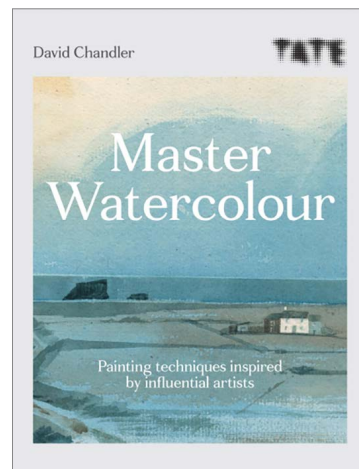
EDINBURGH ART SHOP

SHOP ONLINE  
MAIL ORDER  
LOCAL DELIVERIES  
FOLLOW FOR REGULAR UPDATES  
SPECIAL OFFERS & ART COMPETITIONS  
www.EdinburghArtShop.com

## ART BOOKS



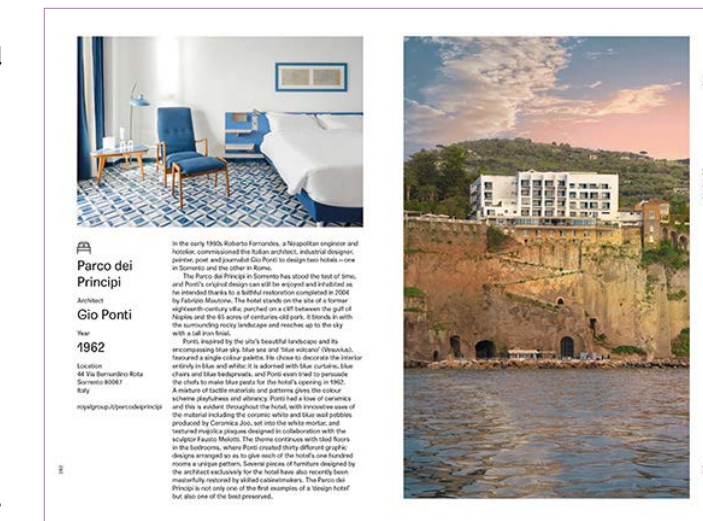
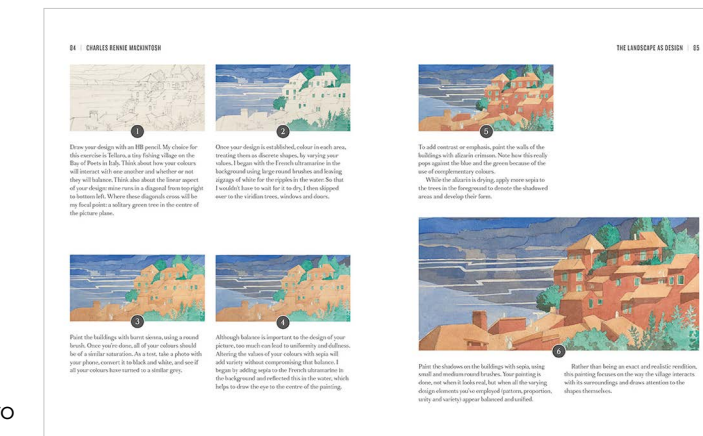
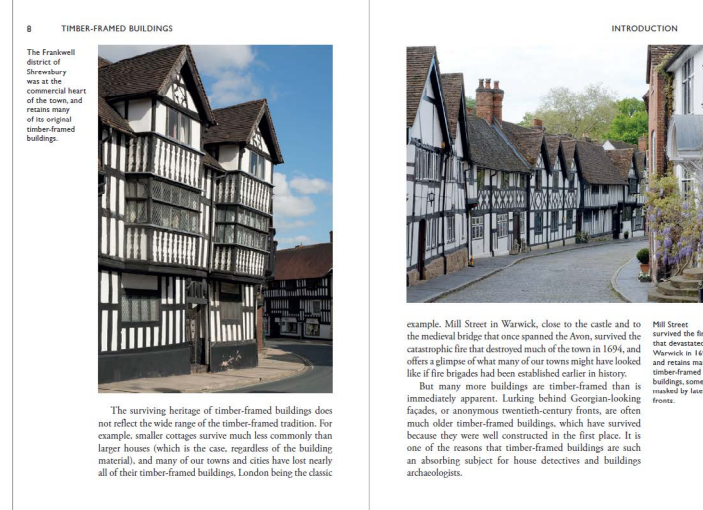
**Timber-Framed Buildings, by Richard Hayman, pub. Shire Publications** Timber-framed buildings are a distinctive and treasured part of Britain's heritage. The oldest are medieval, but their numbers peaked in the 16th and 17th centuries, with a revival in the 19th. The majority of timber-framed buildings are houses, but wood was used in all kinds of other buildings, including shops, inns, churches, town halls and farm buildings. This beautifully illustrated book outlines the history of timber-framed designs, the techniques used in their construction, the regional variations in style and how these buildings displayed social status.



**Master Watercolour – Painting techniques inspired by influential artists, by David Chandler, pub. Ilex** Taking inspiration from iconic paintings in the Tate collection, this step by step guide reveals the techniques of the masters to help you improve your own painting skills. As you work through the guided exercises, you'll learn how to work 'wet into wet' with Maggi Hambling, master colour temperature with John Singer Sargent or create rhythm and unity in your paintings with John Nash. Whether you are looking to reinvigorate your watercolour practice with new techniques, try your hand at a wide variety of painting styles or discover a new, inspiring master of the art, this book offers something for every watercolourist.



**Modernist Escapes: An Architectural Travel Guide, by Stefi Orazi, pub. Prestel** Designed by famous architects, many modernist buildings all over the world are open to visit or even for overnight stays. From Bauhaus to Brutalist, over 130 of them are featured here with full colour photography of the exteriors and interiors, revealing many beautiful details such as the bright red drum fireplace in Giancarlo de Carlo's Ca' Romanino in Urbino, Italy or the Constructivist-like staircase in Renaat Braem's house and studio in Antwerp, Belgium. Each building is accompanied by information on its history. This is both great escapist reading and a practical guide to available options if you're looking for a unique holiday experience.





# ART 'N' JOY

PICTURE FRAMERS AND GALLERY

Art for your heart and home  
Stay safe and browse



01294 472 222

[www.artnjoy.co.uk](http://www.artnjoy.co.uk)

48 & 52 HAMILTON ST, SALTCOATS KA21 5DS



**THE VELVET EASEL GALLERY**

Our Winter Exhibition Continues **ONLINE**

298 Portobello High St  
Portobello  
Edinburgh  
EH15 2AS

07835 813689  
velveteasel.co.uk  
art@velveteasel.co.uk

Seascape and Landscape Paintings by  
**Angela Lawrence**

**Clience Studio**

Highlands, Islands, Galloway and Cumbria feature at this artist's studio and gallery.

Angela works in a variety of sizes and also presents a wide selection of signed archival prints as well as art gifts and calendars from her Galloway paintings.

Paintings, Prints and Commissions. Mon-Sat 10.30-5, Tues 10.30-4

By the Clocktower  
212 King Street  
Castle Douglas DG7 1DS  
07902 301 883  
[www.cliencestudio.co.uk](http://www.cliencestudio.co.uk)  
 angelalawrencecliencestudio

Currently available online only

# Huh?

Talk about giving art a bad name.  
(Names withheld to protect the guilty.)

*(The artist's) connected research is concerned with the emotional impact and commanding power made by both the built environment and the miasma generated from neoliberalism.*

*The phenomenological investigation of ambiguity and a speculative approach to the observation of lived spaces create the framework of (the artist's) practice.*

*(The artist's work is) concerned with the incremental progress of repetitious actions, of concealed forms, vernacular and non-human architecture, journeys to marginal places, and contorted observations based on urban existence.*

*The application of (the artist's) working methods reflects ethnographic or qualitative research without proselytising or conclusion.*

*(The artist's) practice is rooted in drawing as a vehicle for performativity.*

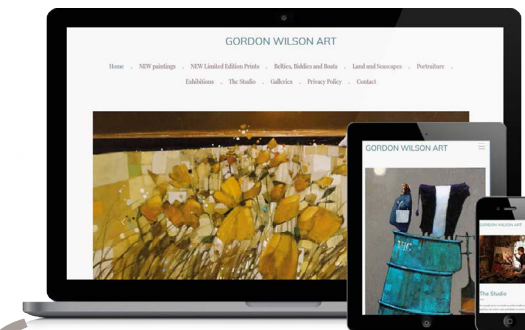
*(The artist's) work is often relational and takes into account the wider ecology of people and place.*

## ArtLook

SOFTWARE & WEBSITES FOR ARTISTS & GALLERIES

Prices from

**£5 PER MONTH**



Easy to set up, easy to manage and with full support along the way from the UK's specialist supplier of software and websites for the visual arts.

- Fully mobile friendly websites
- Multiple layouts and style options
- E-commerce ready
- State of the art cataloguing and sales tools included
- No additional hosting charges
- Optional 'Express' service available – your site set up for you and ready to manage

Try the system and create your own website **completely free** for 30 days with no obligation.

We're proud to be the choice of artists and galleries throughout Scotland

*I have been loving doing the website – it's fabulously straightforward once you get started. Thanks for your initial help, we're delighted with how the final site looks.*

**GORDON WILSON**  
[www.gordonwilsonart.co.uk](http://www.gordonwilsonart.co.uk)

Learn more on our website at  
**[www.artlooksoftware.com](http://www.artlooksoftware.com)**  
hello@artlooksoftware.com  
or call on 0117 920 0025





The long, lonely roads of the American southwest have many stories to tell. These images hint at some of them.

