



December 11, 2020

Issue 143



**14TH ANNUAL ART &
CRAFT GIFT GUIDE**

**Dozens of gift ideas for
art-lovers!**

Hoopoe Sun Worshipper Box with articulated silver wings & glass by Bryony Knox, one of over 50 artists, craftmakers and designers in the Christmas Open Studios at Edinburgh's Coburg House.

See ARTS NEWS.



**LEITH
SCHOOL
OF ART**

WEEKEND WORKSHOPS

Book our WEEKEND WORKSHOPS online - beginning January 2021.

**BEGINNERS | DRAWING & PAINTING | JEWELLERY
ILLUSTRATION | PORTRAITURE | ARTIST'S BOOKS
PRINTMAKING | ABSTRACT PAINTING**



YEAR-LONG COURSES 2021/22

Applications are now open for YEAR-LONG COURSES - starting September 2021

**FOUNDATION | PAINTING | DRAWING
CONTEMPORARY ART PRACTICE | FIGURE | LANDSCAPE
ONE DAY PAINTING | PRINTMAKING**

Leith School of Art, 25 North Junction Street, Edinburgh, EH6 6HW
www.LeithSchoolofArt.co.uk | 0131 554 5761 | Enquiries@LeithSchoolofArt.co.uk

COAST GALLERY

Winter Exhibition 'Winter Song'

24 Oct - 12 Feb

Featuring artists Jackie Henderson, Stanley Bird, Ian Mcwhinnie, Nicola Ross,
Claire Beattie, Basia Roszak, John McClenaghan and Aliisa Hyslop



Bespoke picture framing - ask about
our home consultation service

**11-4 Mon - Sat. Closed Sun.
144 High Street, Dunbar, East Lothian
01368 865 141 www.coastart.co.uk**

4 November to 17 December 2020



Images: Isabelle Huppert in Jean-Paul Salomé's *La Dernière*

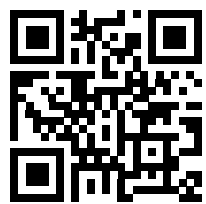
La fête du CINÉMA 28 fff

FRENCH FILM FESTIVAL UK

In cinemas and online

Edinburgh Filmhouse,
Aberdeen Belmont Filmhouse,
Glasgow Film Theatre and
other leading independent
cinemas across Scotland

www.frenchfilmfestival.org.uk



THE BALLATER GALLERY

WINTER SHOW

COMMENCES 28TH NOVEMBER 2020

DAVID REID & HIS TEAM INVITE YOU TO VIEW THE NEW COLLECTION
ARTWORK FROM OVER 50 LEADING SCOTTISH ARTISTS



WWW.BALLATERGALLERY.CO.UK

46 BRIDGE STREET, BALLATER, AB35 5QD.
TEL: 01339 755444 EMAIL: INFO@BALLATERGALLERY.CO.UK



FORTHCOMING AUCTIONS

MODERN SCOTLAND: A Private Collection of Scottish Art | **12 JAN**
 Contemporary & Post-War Art | **20 JAN**
 Prints & Multiples | **20 JAN**
 The Ski Sale - Travel Posters | **20 JAN**
 Five Centuries: Furniture, Paintings & Works of Art | **03 FEB**
 Rare Books, Manuscripts, Maps & Photographs | **17 FEB**
 A CELTIC VISION: A Private Collection of Scottish Paintings | **18 FEB**

ELIZABETH BLACKADDER (BRITISH B.1931)
 ORIENTAL POPPIES | To be offered in CELTIC VISION

LYON & TURNBULL
 AUCTIONEERS SINCE 1826

0131 557 8844 | www.lyonandturnbull.com



JAMES FULLARTON

nov 26th - dec 24th, 2020

ROGER BILLCLIFFE GALLERY

134 blythswood street
 glasgow g2 4el
 0141 332 4027
www.billcliffegallery.com

The **Gracefield Arts Centre** in Dumfries is hosting the inaugural exhibition by over 20 members of South West Scotland Printmakers (SWSP), a newly formed group promoting work by leading original printmakers from Dumfries and Galloway, Ayrshire and South Lanarkshire (Dec 5-Jan 16).

Printmaking techniques range from traditional processes like etching on metal plates or carving blocks of lino or wood to more modern processes like screenprint or collagraph.

Although original prints are often made in limited editions, each is individually created by the artist. This offers an affordable opportunity to buy original and unique artwork.

Sat Dec 12, 11am-2pm: Artist Sarah Keast provides socially distanced demonstrations of different printmaking techniques.

Pictured: Colin Blanchard, *Fishing*, linocut & screenprint

www.dgculture.co.uk



Just in time for Christmas, jewellery exhibitions return to the **Roger Billcliffe Gallery** in Glasgow with **Diamonds and Pearls** (until Dec 24), featuring new designs by Sue Lewis (pictured: diamond earstuds) and Sabine Konig. www.billcliffegallery.com

Over the years **Milton Art Gallery** in Milton of Crathes near Banchory has developed close ties with many Scottish contemporary artists and craftmakers, showing a large selection of paintings, sculpture, ceramics, prints, jewellery, glassware and textiles in their two beautifully appointed, light-filled exhibition spaces.

Two artists new to the gallery are Pete Morrison, whose Scottish landscapes evoke a sense of place with their interplay of light and land, and ceramicist Sarah Koetsier, whose elegant porcelain pots decorated with colourful underglazes emphasise material and texture for a tactile finish (pictured: Carved vases).

During **Milton Makers** (Dec 12 & 13) the gallery hosts a range of quality craft stalls where the public can meet the makers, learn about their techniques and buy direct from them. www.miltonart.com





Poppies James Fullarton



Santa Maria Della Salute Clare Rennie



The Maclaurin Art Gallery
Rozelle Estate,
Monument Road,
Ayr, KA7 4NQ

Monday to Saturday
10am - 5pm
Sunday 12 noon - 5pm

The Maclaurin Trust
is a Scottish Charity No:- 12798

Our new Exhibition **INTO THE LIGHT** celebrates the creativity of a group of Ayrshire artists and makers who have produced this work over the last six months. It is an eclectic mix of subjects and styles, inspirational and uplifting. There is something for everyone to enjoy and plenty of ideas for Christmas presents!

We hope you will be able to visit us in person but for those who are unable to do this we have created a virtual exhibition, visit www.themaclaurin.org.uk Covid 19 restrictions are in place. Please telephone the gallery to make an appointment to gain access to the exhibitions.- 01292 445447

www.themaclaurin.org.uk

If you are unable to come into the gallery and wish to purchase an item please telephone **01292 445447**

Scottish artist, author and broadcaster Lachlan Goudie has gifted a large acrylic painting to the **Scottish Maritime Museum** in Irvine. Entitled *Shipyards Brotherhood*, the work was conceived during Goudie's project documenting construction of the next generation of Britain's naval vessels at BAE Systems shipyards at Scotstoun, Govan and Rosyth.

The painting, which was included in Goudie's Shipyards exhibition at the Scottish Maritime Museum in 2017, will go on show there in January 2021. It will be added to the museum's nationally significant art

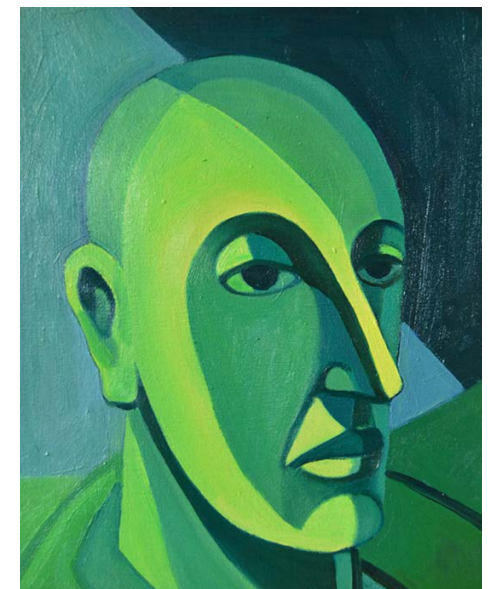
collection of maritime-related oil paintings, watercolours, sketches, photography, sculpture and mixed media dating from the mid-19th to the early 21st century by artists such as John Bellamy, F.C.B. Cadell, Ian Hamilton Finlay, Kate Downie, George Wyllie and Benno Schotz.

Lachlan Goudie described the painting as "an amalgamation of different scenes, principally at Govan during the construction of HMS Queen Elizabeth. There's a sort of religious echo in the pose of the top figure, who dominates the scene. So the idea of a brotherhood came from that."

www.scottishmaritimemuseum



The **Alternative Giving Christmas Exhibition** at the **Barony Centre** in West Kilbride (until Jan 16) features work by over 20 local artists and makers, including silver jewellery by Marion E. Kane, bowls and vessels in locally sourced hardwoods by Ruth Mae, landscapes by Clive Sutton and coastal scenes and floral studies by Pam Glennie (pictured: *Colours of Seamill*), www.crafttownscotland.org



Interaction of Colour is an online showcase by members of the **Royal Glasgow Institute of the Fine Arts** (Dec 5-Jan 29). The exhibition title refers to the 1963 handbook of the same name by the German-born artist and educator Josef Albers, in which he outlines a set of principles and teaching methods for understanding and perceiving colour in different ways. RGI members have interpreted the theme in various media and all works are available to purchase via the online shop. Pictured: Angus-Fernie, *Head at night* www.the.royalglasgowinstituteofthefinearts.co.uk

NICHOL WHEATLEY

I'VE BUILT A NEW STUDIO DURING LOCKDOWN. IT WILL BE OPEN FOR VISITS (BY APPOINTMENT) FROM THE SPRING I WILL ALSO BE DOING SOME TEACHING.

FO FURTHER INFORMATION PLEASE CONTACT ME ON NICHOL@NICHOLWHEATLEY.COM

WWW.NICHOLWHEATLEY.COM



dockside
GALLERY

Neil McBride
Hometime (Detail)
01289 302437 | art@docksidegallery.co.uk
84 Main St., Tweedmouth, Berwick-upon-Tweed TD15 2AA

EION STEWART
FINE ART

Northern Lights
Mixed Winter Show
5th Dec - 27th Feb

55 Allardice Street, Stonehaven, AB39 2AB
01569 780606
art@eionstewartfineart.com
www.eionstewartfineart.com

A time and a place

A new collection of paintings and limited edition prints

Alexander Millar transports his 'Youth and Young Manhood' characters to iconic city locations that have been very important in his life – from the High Level Bridge in Newcastle to the Trocadero Gardens in Paris.



www.alexandermillar.com

Princes Square
Buchanan Street
Glasgow
0141 221 7565



55-59 Grey Street
Newcastle
upon Tyne
0191 230 4440

The big red shutter at **Coburg House** in Edinburgh will slide open for the two-weekend **Christmas Open Studios** (Dec 5-6 & 12-13), featuring art, jewellery, textiles, ceramics and more by over 50 artists and designers. Usually a very crowded affair, this year's event sees several



The **Royal Scottish National Orchestra** and **Children's Classic Concerts** have teamed up for a Christmas show in partnership with STV, who will host the full concert on the STV Player, which is available throughout the UK on platforms including Freeview Play, Sky, YouView and Virgin Media. *The Night Before Christmas* premieres on Saturday December 12 at 2pm and is available to watch for 30 days. The concert is free to view, but donations to the RSNO and CCC are welcome via text and PayPal through RSNO's website. Pictured: RSNO's principal timpanist Paul Philbert MBE
www.rsno.org.uk/ChristmasCCC

key changes, including reduced visitor numbers, mandatory, pre-booked time-slots and card payments available in all studios. Face coverings must be worn and hand sanitising stations are available throughout. Pictured: Wangle Bangle in resin by Kaz Robertson www.coburghouse.co.uk

Ghost Calls at **Dundee Contemporary Arts** (Dec 5-Mar 14) marks London-based artist Emma Talbot's first solo exhibition in Scotland. Combining drawing, painting, animation and three-dimensional making, she creates a painterly world of visual poems in the gallery, where audiences will step into imagined future environments in which



humankind has been flung out of a capitalist-driven world of digital technologies and must look towards more ancient and holistic ways of crafting, making and belonging in order to survive. Pictured: *Journey to the underworld*
www.dca.org.uk



On the Same Boat at **Edinburgh Palette** (until Dec 20) is a group exhibition of work by 30 tenants of Saint Margaret's House, one of Scotland's largest artist studio complexes. (Look for the giant 'ART' on the side of the Meadowbank building.) Says curator Marcin Krupa: "The idea behind the exhibition was to give some light of hope and optimism at the end of this tragic and unpredictable year. I wanted to show how art and creatives are an important part of society and human mental well-being." There is an accompanying exhibition of work by students of an in-house landscape course run by Paul Mowat. Pictured: Work from the Edinburgh School of Icon Painting
www.edinburghpalette.co.uk

ART & CRAFT
COLLECTIVEFROM ART...
TO CRAFT

Original acrylic to oils, glass to gemstones and much more



93 CAUSEWAYSIDE
EDINBURGH EH9 1QG
0131 629 9123
07801 581674
www.artcraftcollective.co.uk
OPEN TUESDAY - SUNDAY

Marta Utsler

ABSTRACT PAINTER



Dual Narratives Part 1

Dual Narratives Part 2

www.martautsler.com
martautsler@gmail.com 07758 335417

Photo: Gabriela Silveira



The **Christmas 2020 Gift Edit** at **Custom Lane** in Edinburgh (until Jan 17) features work by 28 contemporary practitioners and independent stores in the fields of woodwork, product design, jewellery, ceramics, glass, photography, printed matter, skincare, cloth and botanicals. Products can be viewed online and at the retail unit, HRBR,

in Leith and bought directly through the maker or store.

Custom Lane is a complex of workspaces, showroom and exhibition area where designers and design-led makers can collaborate and develop their work in a variety of media. There is also a cafe which is open to the public. www.customlane.co

Studies Editions is an online sale of prints by leading contemporary photographers associated with the *Studies in Photography* journal together with prints from rediscovered historic negatives. The first collection features 20 established and emerging photographers, each of whom has provided one image for sale as an editioned archival pigment print.

A set of images by the medium's pioneers David Octavius Hill and Robert Adamson, who established Scotland's first photography studio in the 1840s, is also available as a special edition. The original negatives have been digitised and made into archival pigment prints which can be purchased singly or as a box set, all accompanied by text written by the renowned Hill and Adamson scholar Sara Stevenson. Pictured: Image by Susan Derges

www.photo-networks.scot



FRAMES GALLERY



Golden Moon, screenprint by Anne Skinner

Winter 2020 Mixed Exhibition
21st November—30th January
paintings, printmaking, ceramics, jewellery and glasswork

10 Victoria Street Perth PH2 8LW | framesgallery.co.uk | info@framesgallery.co.uk | 01738631085




9 Dook Street, Dundee, DD1 4BT.
Open Monday to Saturday, 10-4pm



Unique Gifts, Artists, Makers,
Exhibitions & Events

Fran Marquis



Ceramics and tutoring
New website
www.franmarquis.com

WFG
White Fox Gallery



Cottages up The Yarrow Helen Tabor

WINTER MIXED EXHIBITION
21 Nov – 22 Dec

Vessel Karen Thompson



51 High Street, Coldstream TD12 4DL. 01890 254 010 or 07980 402 755
www.whitefoxgallery.co.uk info@whitefoxgallery.co.uk
Tues-Sat 10am-5pm. Wed by appointment.



The **Great Tapestry of Scotland** gallery and exhibition space, due to open in Galashiels in 2021, aims to make the nation's history, heritage and culture more accessible to all through visual storytelling. This follows new research


by YouGov which found that many people in Scotland have limited knowledge of some key moments in Scottish history. It also found that over 70 per cent of those surveyed agree that they are more likely to remember an historical event if they have seen an image depicting it.

Hand-stitched by a team of 1,000 stitchers in communities all over the country, the Great Tapestry of Scotland tells the visual history of the country from its formation to the present day. It was the vision of the author Alexander McCall-Smith and designed by artist Andrew Crummy based on a narrative written by writer and historian Alistair Moffat.

One of the world's longest tapestries and one of the biggest community arts projects ever undertaken in Scotland, the tapestry is made up of 300 miles of wool – enough to lay the entire length of Scotland from the border with England to the tip of the Shetlands. Pictured: A panel depicting the 1745 Jacobite Rising www.liveborders.org.uk/gtos




Glasgow's **Annan Gallery** may currently be closed to visitors due to Covid, but you can still support some of Scotland's best contemporary artists by visiting the **Winter Show** online (until Jan 31). You can also take a virtual 3D tour of the gallery. Pictured: Alison McWhirter, *Tulips Against Warm White* www.annanart.com



Wildlife Art & Sculpture


Robert Greenhalf
Anthony Theakston
Matt Underwood

SOC
Waterston House
Aberlady
Thurs-Sun 10-4
22 Nov - 10 Jan
www.the-soc.org.uk



Callan at 60

A retrospective of work from the past 25 years and brand new work from 2020



11-17 Dec. Dundas Street Gallery, Edinburgh.

Includes work on loan from private collections and new work for sale.
Opening events planned for Fri 11 & Sat 12 (subject to regulations).
Also viewable online with an accompanying catalogue.
www.damiancallan.com

JOHN LOWRIE MORRISON O.B.E.

Jolomo



ON THE EDGE: THE SCOTTISH ISLES
7TH - 29TH NOVEMBER 2020



THE GLASGOW GALLERY

182 BATH STREET GLASGOW G2 4HG
0141 333 1991 info@glasgowgallery.co.uk
www.glasgowgallery.co.uk

SCOTTISH DESIGN EXCHANGE



The Scottish Design Exchange is a social enterprise business, supporting over 300 artists and designers between two stores in Edinburgh and Glasgow and an online store.

As a not-for-profit business, every sale we make helps to support local artists and designers.

We exist to line their pockets, not ours!



Edinburgh store
51 George Street

Glasgow store
Buchanan Galleries

Shop online
scottishdesignexchange.com/
shop-1

scottishdesignexchange.com

CONTEMPORARY, AFFORDABLE

and now

VIRTUAL

Launches
**30th Oct -
30 Dec 2020**

In association with



ABERDEEN ART FAIR

.co.uk

Prices from
£50-£30,000

Organised by



EDINBURGH ART SHOP

SHOP ONLINE
FOR CLICK & COLLECT
OR MAIL ORDER

SHOP INSTORE
GIFT VOUCHERS
STUDENT, YOUNG SCOTT & ART
GROUP/CLASS DISCOUNTS

REGULAR UPDATES ON INSTAGRAM, FACEBOOK & OUR WEBSITE
www.EdinburghArtShop.co.uk

ARTS NEWS

With stores in Edinburgh and Glasgow featuring a range of products made in Scotland by over 300 artists, craftmakers and designers, the **Scottish Design Exchange** is having great success with its unique business model whereby suppliers rent display space and keep all sales receipts, so every penny you spend goes directly to those dedicated creators working from studios, living rooms, garden sheds or kitchen tables. (You can read some of their extraordinary stories on the company's

blog page.)

The Edinburgh store recently moved uptown from Ocean Terminal into the former Laura Ashley shop on George Street opposite the Assembly Rooms, while you'll find the Glasgow store, which paid out over £1 million to creators in its first 12 months, in Buchanan Galleries. Pictured: Abstract Sunset design digitally printed on canvas cushion cover by Loopy Lally

www.scottishdesignexchange.com



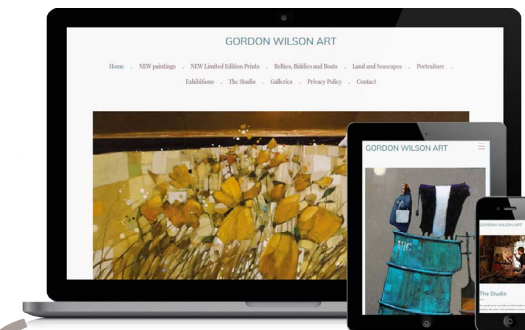
Watercolourist **Jonathan Wheeler** has a passion for Scotland. His depictions of castles, majestic landscapes, Edinburgh street scenes and distilleries are available as limited edition and signed giclee prints in galleries throughout the UK and via his website. At the last count he had sold over 15,000 prints, while his "Scottish Castles" book is a best-seller. His original paintings are also for sale and he accepts commissions. Pictured: *Lochnagar* www.soulofscotland.co.uk

ArtLook

SOFTWARE & WEBSITES FOR ARTISTS & GALLERIES

Prices from

£5 PER MONTH



Easy to set up, easy to manage and with full support along the way from the UK's specialist supplier of software and websites for the visual arts.

- Fully mobile friendly websites
- Multiple layouts and style options
- E-commerce ready
- State of the art cataloguing and sales tools included
- No additional hosting charges
- Optional 'Express' service available – your site set up for you and ready to manage

Try the system and create your own website **completely free** for 30 days with no obligation.

We're proud to be the choice of artists and galleries throughout Scotland

I have been loving doing the website – it's fabulously straightforward once you get started. Thanks for your initial help, we're delighted with how the final site looks.

GORDON WILSON
www.gordonwilsonart.co.uk

Learn more on our website at
www.artlooksoftware.com
hello@artlooksoftware.com
or call on 0117 920 0025



BORDERS The art of **Marta Utsler**, from larger-sized canvases to smaller works on paper, will surely be an effective way to create a focal point. www.martautsler.com



ISLE OF SKYE **Dandelion Designs & Images Gallery** has a wide selection of limited edition linoprints, collagraphs and mixed media paintings as well as locally hand-made art and craft, photography, jewellery, cards and prints. www.dandelion-designs.co.uk



EAST LOTHIAN **Coast Art** in Dunbar has cute and quirky ceramics by Ans Vink, hand-crafted in the Netherlands and perfect for any wall or mantelpiece. www.coastart.co.uk

EDINBURGH **The Nomads Tent** can brighten up those chilly winter days with one of their gorgeous reversible kantha scarves from Jaipur, made from recycled silk saris. Choose from a lovely selection of colours and patterns. www.nomadstent.co.uk



DUMFRIES & GALLOWAY Maureen Briggs of **High St. Gallery** in Kirkcudbright has produced a range of unique, hand-crafted découpage mirrors, incorporating digital and original artwork and 'trompe l'oeil' elements. www.highstgallery.co.uk



FIFE Wayne Galloway's work can be seen at the St Andrews-based **Sproson Gallery**, which also incorporates a family-run, bespoke custom picture framing business. View their selection of artists and contact details at www.sprosongallery.com



AYRSHIRE **Gallery 2** in Kilmarnock has some lovely work on show such as Lorna Reid's Jackanory in felt wool. Based in West Kilbride, Lorna worked for large knitwear companies and continues to design, make and teach. www.gallery2kilmarnock.co.uk



EDINBURGH On the southside of Edinburgh, **Art & Craft Collective** showcases the work of over 60 artists and crafters, with original art to pottery and more - always original and often unique. Open Tuesday - Sunday. www.artcraftcollective.co.uk



FIFE **Tatha Gallery** in Newport-on-Tay can brighten up your life with a wonderful array of smaller scale works, ceramics and textiles - a great way to support local artists. www.tathagallery.com



FIFE **The Quay Gallery** in Aberdour offers a carefully curated selection of paintings, prints and objets d'art, all sourced from the UK. Open Easter until Christmas. www.thequaygallery.co.uk



ABERDEEN Let the team at **Gallery Heinzel** help you choose the perfect original gift for your partner, family or friends. They can also arrange delivery anywhere in the world. www.galleryheinzel.com



ABERDEENSHIRE **Milton Art Gallery** at Milton of Crathes, Banchory has work by a range of makers, including Sarah Koetsier's hand-thrown porcelain pieces, which look lovely together or on their own. www.miltonart.com



PERTHSHIRE **Aberfeldy Gallery** features contemporary art by established and emerging Scottish artists and craftmakers, landscapes, wildlife art and photography, pottery, glasswork and jewellery. Photo: Adam Seward. www.aberfeldygallery.co.uk



PERTHSHIRE Based in the beautiful village of Comrie, **Goldfinch Gallery** features new and exciting works in every type of media, such as Hetty Williams' unique resin lamps with LED lighting. www.goldfinchgallery.co.uk ▶▶▶

MILTON ART GALLERY



Ceramic Lanterns

A warm inviting independent gallery offering a wide range of Scottish artists, designers and makers.

New Winter Collection
Malcolm Appleby
Kanita Sim & Bob Emmett



Kanita Sim - Cove

Mon-Sat 10.30-4.30, Sun 10.30-4

Milton of Crathes, Banchory AB31 5QH
info@miltonart.com 01330 844664
www.miltonart.com



Malcolm Appleby - Primrose Bangle

Robert McAulay White Roofs III

GALLERY HEINZEL
CONTEMPORARY ART

WINTER EXHIBITION
14th November to March 2021

Gift advice, wrapping & delivery service

24 Thistle Street, Aberdeen AB10 1XD 01224 625629 info@galleryheinzel.com
Open Tues to Sat from 10am www.galleryheinzel.com

f t own art

Yvonne Hair Quiet Reflection, Loch Tay

SPROSON
GALLERY & FRAMER
ST ANDREWS

Now introducing
A Scottish Winter Collection

A contemporary art gallery in St Andrews

Tues-Sat 10am-5pm.
Closed Sun & Mon

138 South Street
St Andrews, KY16 9EQ
01334 474331
info@sprosongallery.com
www.sprosongallery.com
f sprosongallery



ARGYLL The Small Works show at **Resipole Studios** in Acharacle offers unique gift ideas for the art-lover in your life, including quality ceramics, painting, sculpture and more, for under £500. www.resipolestudios.co.uk



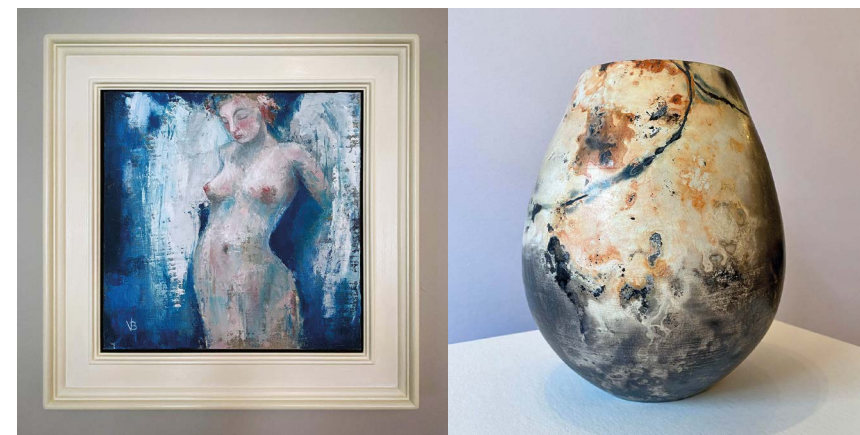
BORDERS Solo Gallery in Innerleithen has a range of work by Scottish artists and makers. These beautiful, smoke-fired ceramic gannets are from a collection by Vivienne Sillar. www.sologallery.co.uk



EDINBURGH The Winter Exhibition at the **Torrance Gallery** in Edinburgh features a cornucopia of original artwork by over 40 gallery artists, including this oil by Marion Drummond. They also have a wealth of jewellery, ceramics, bronze and glassware. www.torrancegallery.co.uk



GLASGOW The **Roger Billcliffe Gallery** has a collection of over a hundred small (20x20cm) paintings by some of Scotland's best artists. Displayed unframed, they make perfect gifts. www.billcliffegallery.com



ABERDEENSHIRE Eion Stewart Fine Art in Stonehaven is a contemporary art gallery and frame-maker, showing some of the best Scottish-based painters and makers in a year-round exhibition programme. www.eionstewartfineart.com

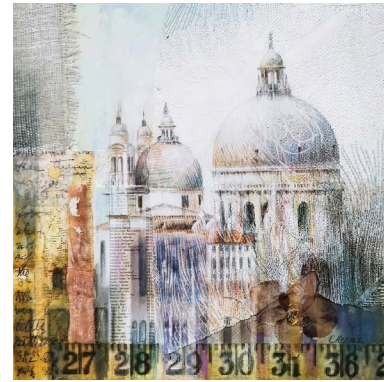
PERTSHIRE A series of eclectic exhibitions at **Artisanand** in Aberfeldy showcases a wide range of media and styles from the quirky to the traditional by over 50 local artists. These paper and willow sculptures are by Georgia Crook. www.artisanand.co.uk



ABERDEENSHIRE Larks Gallery in Ballater on Royal Deeside has a range of work by contemporary artist Lois Carson. A graduate of Gray's School of Art, she is pushing the boundaries of her work. www.larksgallery.com



EDINBURGH Allium in South Queensferry has a wide and ever-changing range of original art, ceramics, glass and more by Scottish artists and makers. This silver jewellery (pictured) is made in Allium by 14Ten Designs. www.alliumqueensferry.com



AYR The Maclaurin Gallery celebrates the creativity of a group of Ayrshire artists and makers, and has wonderful gift ideas, Clare Rennie's misty ethereal scenes of Venice. www.themaclaurin.org.uk



EDINBURGH The doors are open daily at **Edinburgh Art Shop** or you can shop online for all types of art and craft materials. Gift vouchers, special offers and discounts for students and art groups available. www.edinburghartshop.co.uk



DUBLIN & ONLINE The Doorway Gallery has a winter show to round off 2020, boasting a huge variety of original figurative and colourful paintings to choose from, as an ideal gift or a great investment. www.thedoorwaygallery.com



EDINBURGH Encourage a friend to try something creative with a gift voucher for **Leith School of Art**, where the programme includes Weekend Workshops, Day & Evening courses and Summer Schools. www.LeithSchoolofArt.co.uk/gift-vouchers



BORDERS Among the wide range of works on sale at **Flat Cat Gallery** in Lauder is Standing Hare and Reclining Hare, sculpted in clay by Bernadette Wood, capturing the hares' magical, mystical nature. www.flatcatgallery.co.uk



ARGYLL & BUTE The Archway Gallery in Lochgilhead has paintings, prints, ceramics, jewellery and crafts by artists and makers from Scotland and beyond, such as these traditional, hand-crafted figures from Mexico. www.thearchway.co.uk



DUNDEE & ANGUS You can find ceramics by **Fran Marquis** on her new website, available to buy for Christmas and beyond, plus vouchers for pottery lessons in Arbroath to use when classes are possible again. www.franmarquis.co.uk



PERTSHIRE This fabulous teapot by David Pantling is available in different patterns from **Frames Gallery** in Perth, from a range which also includes mugs, jugs, toast racks and a butter dish. www.framesgallery.co.uk



DUNDEE Gallery Q can fulfil all your art desires with paintings, prints, glass, ceramics and jewellery. They also offer gift vouchers, free postage within the UK, and interest-free payment by instalment with the Own Art scheme. www.galleryq.co.uk



EDINBURGH The **Velvet Easel Gallery** in Portobello showcases a wide range of contemporary paintings, glasswork, ceramics and jewellery by local artists and craftmakers to suit all budgets. www.velveteasel.co.uk



KINROSS-SHIRE Beautiful landscapes by **Nichol Wheatley** sell out quickly due to heavy demand. From January he is available for new commissions. www.nicholwheatley.com



FIFE & TAYSIDE With shops in Cupar and Dundee, **Maisie & Mac** stocks prints, jewellery and ceramics as well as work in wood, glass and textiles by UK artists and craftmakers. www.maisieandmac.com



AYR The Maclaurin Gallery celebrates the creativity of a group of Ayrshire artists and makers, and has wonderful gift ideas, such as Janet Laurie's jewellery, incorporating semi-precious gemstones. www.themaclaurin.org.uk



GLASGOW & NEWCASTLE Paintings, prints, cufflinks, cushions and mugs are the perfect gifts to suit every taste and budget, from **Alexander Millar**, at their Glasgow and Newcastle galleries, and at www.alexandermillar.com

WWW.NOMADSTENT.CO.UK



RUGS & INTERIORS
DECORATIONS & GIFTS



ONLINE & IN STORE

Tues-Sat 10-5, Sun 12-4
21 St Leonard's Lane, EH8 9SH
info@nomadstent.co.uk, 0131 662 1612

aberfeldygallery

MIXED EXHIBITION
19 Nov - 20 Dec



Paul Bartlett



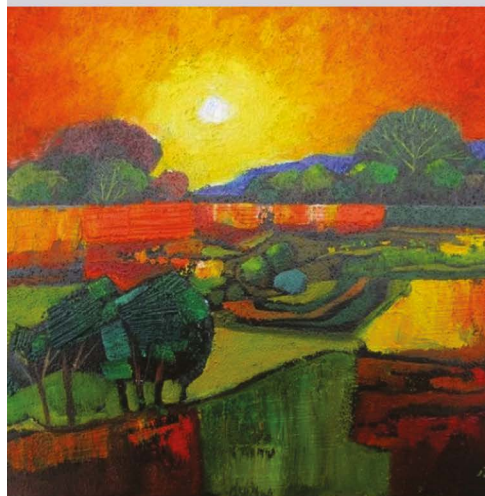
Margaret Evans (cropped image)

Contemporary art by established and emerging Scottish artists. Large variety of landscape and wildlife art - ranging from representational to impressionistic - and a good selection of Perthshire scenes.

FREE UK DELIVERY
aberfeldygallery.co.uk

9 Kenmore Street, Aberfeldy, PH15 2BL
01887 829129
hello@aberfeldygallery.co.uk

HIGH ST. GALLERY
ART & ANTIQUES



'Harvest Sunset' by Davy Brown



1950's Mocha Pot by Thomas Wilkinson

Open by appointment. Tel: 07807 235 196
84 High Street Kirkcudbright DG6 4JL
contact@highstgallery.co.uk www.highstgallery.co.uk



BORDERS Docksider Gallery in Berwick-upon-Tweed has some distinctive, carefully selected gift ideas from all over the UK and beyond, including paintings, prints, cards, ceramics, glass, jewellery and an exhibition of miniature doll's house artworks.
www.docksidegallery.co.uk



EAST LOTHIAN Exhibitions at **Fidra Fine Art** in Gullane combine contemporary Scottish art with work by some of the most influential Scottish names from the past hundred years or so.
www.fidrafineart.co.uk



DUMFRIES & GALLOWAY Clience Studio in Castle Douglas features seascapes and landscapes by owner/artist Angela Lawrence, which are also reproduced on a wide range of gift items. Vouchers are available and commissions accepted.
www.cliencestudio.co.uk



HIGHLANDS Watercolourist **Jonathan Wheeler** vividly captures the beauty of the Scottish countryside and its castles with a brightness and depth which have become his unique signature.
www.jonathanwheelerart.com



EDINBURGH & GLASGOW The **Scottish Design Exchange** is a social enterprise with two stores and an online shop featuring work by over 300 independent artists, craftmakers and designers, who receive 100% of the proceeds from every sale.
www.scottishdesignexchange.com



GLASGOW A stunning collection of artwork created during lockdown, 'Love in the Time of Covid' is the first publication by **The Alchemy Experiment**, priced at £15. Alchemy's recent opening exhibition focused on a selection of artwork from the book.
www.alchemyexperiment.com



BORDERS The **White Fox Gallery** in Coldstream has contemporary art and craft suitable as both gifts and investment pieces, including work by internationally renowned sculptor Keith McCarter and painter Siobhan O'Hehir.
www.whitefoxgallery.co.uk



Best of Barca

Museu Nacional d'Art de Catalunya (MNAC)

The capital of Catalonia is a great art destination

From antiquity to early Classicism to avant-garde to challenging contemporary art, Barcelona art museums cover the spectrum of western art, while two of its native sons are among the giants of 20th century artists.

Is there a more magnificently situated museum anywhere in Europe than the **Museu Nacional d'Art de Catalunya (MNAC)**? Housed in the Palau Nacional (National Palace), it sits magnificently atop Montjuïc hill, its dome inspired by St Peter's in Rome and its four towers by the Cathedral of Santiago de Compostella. A grand double staircase leads visitors up past decorative fountains and from the terrace

cafe at the top there are stupendous views over the city and surrounding hills.

Inside, the "Wow!" factor continues, with 50,000 square metres of exhibition space divided into four sections: Romanesque Art (the world's finest collection, notably a unique ensemble of 11th to 13th century mural paintings); Gothic Art (especially altar pieces, sculpture and decorative pieces); Renaissance and Baroque Art (including works by Titian, Tintoretto, Cranach, El Greco, Velazquez and Rubens); and Modern Art (including the most important collection of Catalan art from the 19th century to the 1940s). www.museunacional.cat

On the other side of the hill in the Parc de Montjuïc, the **Fundacio Joan Miró**

houses the most comprehensive public collection of work anywhere in the world by Barcelona's favourite son. Following the first retrospective of Miro's work in Barcelona in 1968, moves began to establish a space in the city dedicated to his work and the new institution was opened in 1975.

Often seen as the precursor of Abstract Expressionism, Miró (1893-1983) referred to his style as an "assassination of painting" aimed at upsetting the visual elements of established painting. From his early, figurative depictions of rural scenes in northeast Spain, he went on to develop a Surrealist language of symbols and fantastic imagery, using the brilliant colours of his native Catalonia to express a feeling of freedom and energy.

Over 300 paintings, 150 sculptures, 8,000 drawings, the complete graphic works, textiles, letters and documents detail the artist's creative process. There is also

a changing programme of exhibitions of contemporary work by other artists. After seeing the displays, head for the cafe-restaurant, where there are spectacular views of the city from the terrace. You may also want to visit Miro's grave in the nearby Montjuïc cemetery. www.fundaciomiro-bcn.org See also **FINDING MIRO**.

At the foot of Montjuïc is the **CaixaForum**, one of several cultural centres in Spain (the one in Madrid is particularly impressive) run by the charitable arm of Catalonia's bank. Located in a former mattress factory which is considered one of the best examples of Catalan industrial modernist architecture from the early 20th century, it houses a small, permanent contemporary art collection and has a programme of temporary exhibitions. www.caixaforum.es

In the Raval district a few blocks from the city's Gothic centre is the **Museu d'Art Contemporani de Barcelona (MACBA)**. Taking up one side of the Plaça dels Àngels (Angels' Square), the gleaming, white, modern building, with its ground to roof glass facade flooding the interior with light, stands in contrast to the surrounding traditional architecture and narrow streets.

MACBA's permanent collection represents three periods – the 1940s to the 1960s, the 1960s and 1970s and the contemporary era – each one displayed on its own floor in regularly changing exhibitions. The ramp between floors offers ascending views of the surrounding area and to an annex space, Monument, on the other side of the square in the atmospheric cloister of a former convent. www.macba.cat

Round the corner from MACBA is the **Centro de Cultura Contemporànea de Barcelona (CCCB)**, which hosts exhibitions on the core theme of the city and urban culture. Entered from the street through an archway, its beautiful inner courtyard comprises the original 1802 building (a former almshouse) on three sides, with a modern, 30-metre high, glass-fronted wing on the fourth side reflecting the entire scene like a massive projection screen. The CCCB is a multi-disciplinary institution, so during your visit you may also come across music, film,

dance, lectures and readings. www.cccb.org

The Catalan artist Antoni Tàpies (1923-2012) was perhaps the most celebrated Spanish artist to emerge in the post-WWII period. Originally a surrealist painter influenced by Paul Klee and Joan Miró, he is best known for his 'pintura matèrica' (matter painting), in which non-artistic materials are incorporated into the paintings such as clay, marble dust, waste paper, string and rag.

Created by the artist himself to promote contemporary art, the **Fundació Antoni Tàpies** occupies an 1880s building which is a fine example of Catalan Modernism, the region's contribution to Art Nouveau architecture.

The foundation has one of the most complete collections of Tàpies' work, comprising paintings, drawings, sculptures and engravings. These are shown on the spacious first floor, while two lower floors are dedicated to changing exhibitions of work by other artists. Over the years these have included Louise Bourgeois, Merce Cunningham, Andy Warhol, Francis Picabia and Robert Motherwell. www.ftapies.org

Over in the La Ribera (The Shore) district the **Museu Picasso** greets over a million visitors a year, making it Barcelona's most popular art gallery. Housing one of the world's largest collections of the artist's work, arranged in chronological order, it provides a fascinating insight into his creative development.

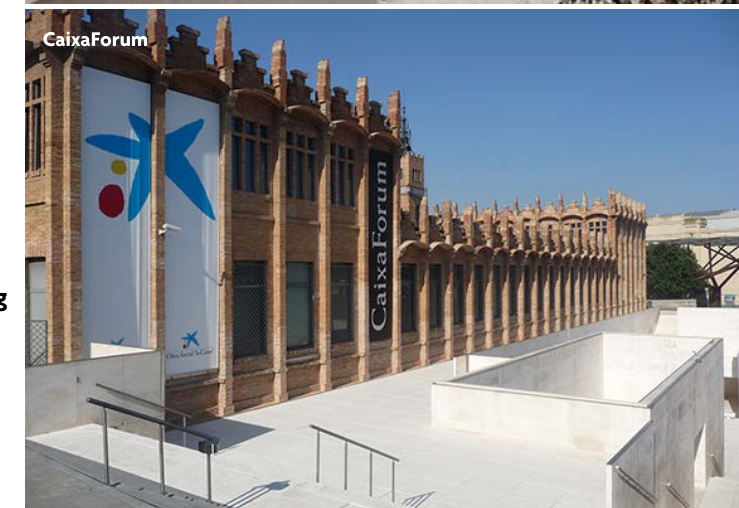
The first museum anywhere dedicated to Picasso's work and the only one created



Museu d'Art Contemporani de Barcelona (MACBA)



Centro de Cultura Contemporànea de Barcelona (CCCB) © Adria Goula, 2011



CaixaForum

during his life, it occupies five large Gothic townhouses dating from the 15th to the 18th century. Starting in the 1890s, when Picasso was in his early teens, the permanent collection is organised into three sections: painting and drawing, engraving and ▶▶▶



JANUARY MORAG STEVENSON



DECEMBER RONA KANT

Larks Gallery
 10-5 MON, THURS, FRI, SAT
 11-5 SUN
 10 Braemar Rd, Ballater
 013397 55888
www.larksgallery.com

Winter 2020
 Mixed exhibition with
 featured artist:
Hilke MacIntyre

Gallery Dundee

www.galleryq.co.uk Queen's Hotel Buildings, 160 Nethergate, Dundee DD1 4DU 01382 220600

WINTER EXHIBITION
 ONLINE FROM 5TH NOVEMBER, EXHIBITION OPENS 7TH NOVEMBER
WWW.WHITEHOUSEGALLERY.CO.UK



Fundació Antoni Tàpies © Lluís Bover & Fundació Antoni Tàpies 2014



Fundació Joan Miró © Fundació Joan Miró, Barcelona. Photo: Pere Pradesaba

ceramics, the latter comprising over 40 pieces from his days in Vallauris in the south of France, where he first learned to work with the material.

The collection ends with a burst of colour with almost 60 works interpreting Velazquez' masterpiece *Las Meninas* (*The Maids of Honour*). Made in 1957, it is the only series of works painted by Picasso which are displayed all together in one museum.

www.museupicasso.bcn.cat



Museu Picasso

FINDING MIRÓ

Joan Miro (1893-1983) has left his imprint on the city of his birth. Revered by its people not only as an artist, but also as a defender of democracy (he lived in internal exile during the Franco regime) and - almost as importantly for the locals - of Catalan culture, Miro is valued both for his visionary art and for his link with his land and its people.

He famously said: "I understand the artist to be someone who, amid the silence of others, uses his voice to say something and who has the obligation that this thing not be useless, but something that offers a service to man."

Art-lovers can walk the bustling streets of the old Gothic quarter which Joan Miró knew as a child and visit some of the places associated with him, including the apartment in which he was born (appropriately, above what is now an art shop), the site of his first retrospective exhibition and one of his favourite restaurants. You can even drink to his health with a cocktail named after him.

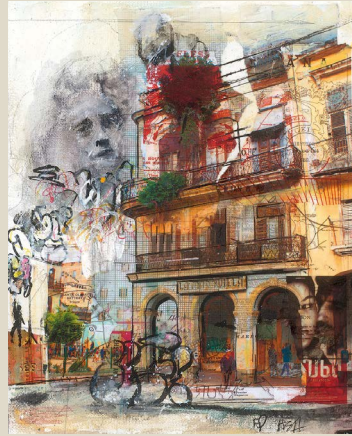
Joan Miró's Mosaic on La Rambla





Annual Christmas Show 2020

ALL WORKS UNDER €500



Havana by Adam de Ville & Anna Allworth



Yellow Lake by Conor Gallagher



La Belle Endormie by Corine Ko

The Doorway Gallery,
24 South Frederick Street, Dublin 2, D02 XP30
+353(0)1764 5895

www.thedoorwaygallery.com

Mon - Sat: 12 - 5pm

Private appointments available



ARTISAN

Mixed Exhibition -
28 Nov - 10 Jan

Featuring:
Georgia Allan



13-15 Bank St, Aberfeldy, PH15 2BB | www.artisanand.co.uk
angela@artisanand.co.uk | 07703 733230 | 01887 822700

Allium

GALLERY - GIFTS - INTERIORS

Winter Mixed Exhibition
Friday 6 Nov - early Jan

Showing Scottish artists and makers

4A Hopetoun Road, South Queensferry, EH30 9RA
0131 319 2140 | www.alliumqueensferry.com
Wed-Mon 11-4.30 | Appointments outwith these times

Winter, Sara Kristin Heggie

ART & TRAVEL

As you walk around, look out also for the Miro-designed logo on Caixa banks

A good place to start is half-way down Barcelona's most famous thoroughfare, La Rambla (riverbed), where you will usually find a cluster of tourists at the Pla de l'Os (literally, the 'plain of the bone') snapping photographs of **Mosaic**, a large, colourful circular piece which Miró built into the pavement in 1976 to greet visitors arriving by sea. (La Rambla leads up from the port.)

Shaped like the cosmos and bursting with the sun, constellations and the planets, **Mosaic** is in the recurring colours of many of Miro's works: blue for the sea, yellow for earth and red for passion. The symbology is familiar too: escape from the earth, flight from earthly troubles. Miro created his famous 'Constellations' series in 1940-41. The celestial symbolism as well as depictions of women and birds recur throughout the rest of his career.

Mosaic is one of three public artworks he dedicated to the city. The others are **Woman and Bird**, a 30-metre high sculpture in the Parc Joan Miró, and a mural at the airport's Terminal 2 to welcome people arriving by air.

A few minutes from La Rambla is the **Antic Hospital de la Santa Creu**, originally one of Europe's earliest medical centres. This is where Miro had his first retrospective exhibition in Spain in 1968. So unrecognised was he in his own country, especially in view of his opposition to Franco, that he had to wait till the age of 75 to see it.

One of the hospital's last patients was another of Barcelona's famous sons, Antoni Gaudí, who died there in 1926 after being struck by a tram. (See **ANTONI GAUDI**.) This is also where Picasso painted his **Dead Woman** (1903). The complex now houses a number of cultural institutions, including an exhibition space for contemporary art. The courtyard is a popular hangout.

Off the Carrer de Ferran (where the streetlamps are fashioned after the earrings of the designer's mother in law) is Pasaje del Credito. Miro was born here in a first floor flat above what is now, fittingly, the Artevistas art gallery. The building is now part of the Hotel Rialto.

At number 4 Carrer de Cucarulla was the top floor art school which Miro attended, while nearby on the Calle Montsio is the atmospheric **Else Quatre Gats** (The Four Cats) bar and restaurant, where he attended drawing classes and met artist friends, including Gaudí. The name is derived from a Catalan expression which means "only a few people" and is usually used to describe people who are a bit strange or perceived as outsiders.

On the wall is a copy of **Ramon Casas and Pere Romeu on a Tandem** by the modernist Spanish artist Ramon Casas, painted specifically for the interior of the cafe and featuring him with the restaurant's original owner. The Barcelona skyline is visible in the background. The original hangs in the Museu Nacional d'Art de Catalunya and the image now features on the restaurant's placemats, which make nice souvenirs, if you ask politely.

You may also come across the **College of Architects**. While it is one of Barcelona's least attractive buildings, the graphics on the facade will be familiar to Miro fans. But they are by another master. When Picasso heard that they were thinking of getting Miro to decorate the building, he said he could easily mimic Miro's style. And so he did.

After a day following in Miro's footsteps, head for the **Bar Boadas** just off the top of La Rambla. Established in 1933, making it the oldest cocktail bar in Barcelona, it is



The 30-metre high **Woman and Bird** in the Parc Joan Miró

famous for its Miro cocktail, a mix of whisky, red vermouth and Cointreau. The walls are covered with memorabilia and celebrity photographs, and a framed letter from Miro proclaims: 'I want my works to be a poem with music from a painter.' Salut!

The Miro Tour can be done on foot, by bicycle or by metro with the aid of a map available at most tourist information offices. www.fmirobcn.org/en/joan-miro/barcelona-mirotour ▶▶▶



The 4 Gats restaurant

THE TORRANCE GALLERY



Winter Exhibition runs to 2nd Jan '21
With Featured Artists: Louise Marks,
Howard Flanagan, Kittie Jones &
James Fraser RSW

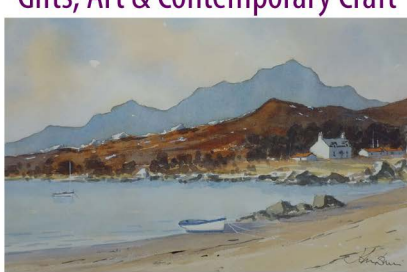

www.torrancegallery.co.uk
36 Dundas St, EH3 6JN t. 0131 556 6366
mail@torrancegallery.co.uk



MOY MACKAY GALLERY
MID WINTER EXHIBITION

17 NORTHGATE, PEEBLES
T. 01721 722116
WWW.MOYMACKAYGALLERY.COM

Maisie & Mac
Gifts, Art & Contemporary Craft

prints . ceramics . textiles . paintings
metalwork . woodwork . glass . clocks
cards . kits . jewellery . lights . throws

1 St. Catherine St., Cupar, Fife, KY15 4LS
2 High St., Dundee, DD1 1SX
www.maisieandmac.com

Seascape and Landscape Paintings by
Angela Lawrence



Clience Studio

Highlands, Islands, Galloway and Cumbria feature at this artist's studio and gallery.

Angela works in a variety of sizes and also presents a wide selection of signed archival prints as well as art gifts and calendars from her Galloway painting.

Paintings, Prints and Commissions. Mon-Sat 10.30-5, Tues 10.30-4

By the Clocktower
212 King Street
Castle Douglas DG7 1DS
07902 301 883
www.cliencestudio.co.uk
f [angelalawrencecliencestudio](https://www.facebook.com/angelalawrencecliencestudio)

One household at a time are welcome to drop in or book a time

ANTONI GAUDI

Barcelona's other favourite son is the architect Antoni Gaudi (1852-1926), whose attempts to recreate nature with bricks and mortar (not to mention crazy paving, shards of tile, broken marble, smashed up cava bottles and other materials) have split observers of his built legacy in Barcelona. Are his creations kitsch or visionary, freakish or pioneering, grotesque or transfixing? You can decide for yourself at his two most visited buildings.

Originally built in the early 1900s as a luxury apartment building (with the world's first drive-in garage). Casa Mila, better known as known as La Pedrera (The Stone Quarry) is one of Barcelona's best loved buildings, its undulating lines echoing the Mediterranean and its craggy facade resembling the nearby hills. A museum in the arch-ceilinged attic explains Gaudi's approach to architecture complete with models, while stepping out onto the rooftop's fairytale landscape is like visiting the set of a Tolkien movie.

www.lapedrera.com

Some buildings are deservedly called jaw-dropping, none more so than **La Sagrada Familia** (The Holy Family), the basilica which constituted Gaudi's life's work (he dedicated over 40 years to the project and is buried beneath the nave) and is variously described as 'religious theatre' and 'a concert of stone'.

Incredibly, it has been under construction since 1882 (providing safe jobs for generations of workers) and it is hoped to be completed in time for the centenary of Gaudi's death in 2026, when it will become the highest building in the city.

In the style of the great Gothic cathedrals, the sheer scale is awe-inspiring and its organic nature, with sculptures of flora, fauna, human figures and even bones protruding from seemingly every surface, makes it appear to grow before your very eyes. If you can peel yourself away from the main floor, you can go to the top of one of the towers or down into the basement, where there is an exhibit on the history of the construction and plaster cast models of the sculptural work.


www.sagradafamilia.cat

La Sagrada Familia



Casa Mila, better known as known as La Pedrera

resipole
studios
FINE ART GALLERY



small works
www.resipolestudios.co.uk
loch sunart | acharacle | argyll | ph36 4hx

Simon Laurie | Imagined Landscape


FIDRA FINE ART

MIXED WINTER EXHIBITION
5 DECEMBER 2020 TO 28 FEBRUARY 2021

Featuring work from:
Claire Beattie, George Birrell, Georgina Bown, Chris Brodie, Davy Brown, Alison Burt, Dominique Cameron, Alan Connell, Jimmy Cosgrove, Matthew Draper, Michael Durning, Ronnie Fulton, George Gilbert, Andy Heald, John Kingsley, Simon Laurie, Sarah Lawson, Steven Lindsay, Alan Macdonald, Carolynda Macdonald, Neil Macdonald, Rachel Marshall, Ailce McMurrough, Alison McWhirter, Sandy Murphy, Jim Rae, Naoko Shibuya and many more.

7-8 Stanley Road, Gullane EH31 2AD
t: 01620 249389 | e: info@fidrafineart.co.uk | www.fidrafineart.co.uk

SOLO GALLERY



New work by
JONATHAN STOCKLEY
Charcoal artist

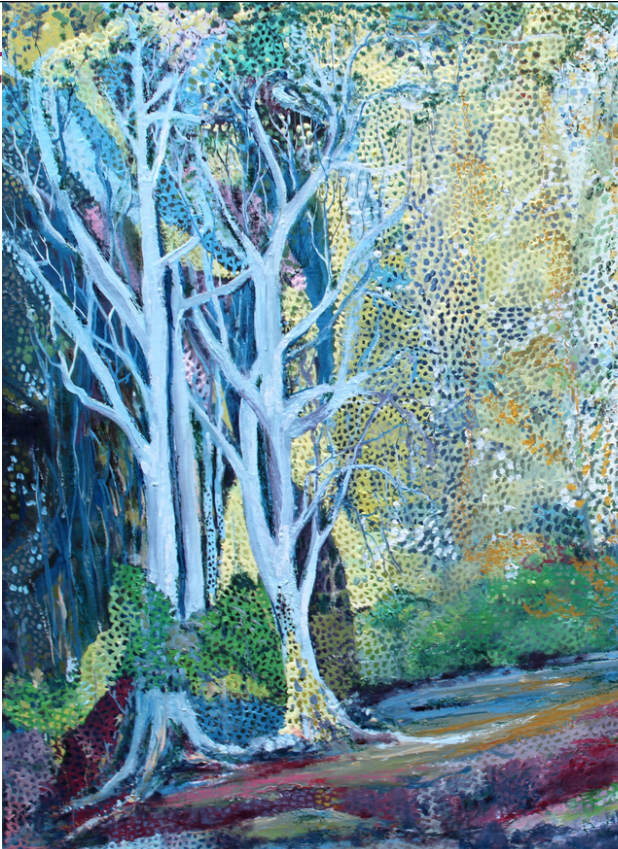
Sat 5 Dec to Christmas
1 Year Anniversary Exhibition

51 High Street, Innerleithen EH44 6HD
07495 710687
www.sologallery.co.uk
Instagram: _sologallery
Facebook: @sologallery51

amaranthine
the everlasting

Vibha Pankaj

Visit her website
www.vibhaartist.com



PERFORMING ARTS

Perth Concert Hall has teamed up with the leading Scottish Baroque ensemble Dunedin Consort to present an exclusive performance of Handel's *Messiah* to be streamed 'as live' via the video platform Vimeo (Wed Dec 23, 7pm, £11.50). Normally one of the musical highlights of the concert hall's programme, the performance, featuring four soloists, the choir and an orchestra, will be filmed in one take to simulate as much as possible the feeling of being there in person. The Dunedin Consort previously won a Gramophone Award for their recording of *Messiah*. Their online autumn broadcasts have attracted over 20,000 viewers.
www.horsecross.co.uk



Photo: James Glossop



The first digital production from **Scottish Opera** is Mozart's *Così fan tutte*, which will be available to view online from December 13. Filmed at Glasgow's Theatre Royal, this new concert performance reimagines Mozart's comedy of infidelities as a game for today in an interpretation somewhere between reality TV and social experiment. Lovers' loyalties are put to the ultimate test as two sisters and their fiancés encounter a man with a point to prove about fickle young couples. Pictured: Michael Mofidian as Don Alfonso.
www.scottishopera.org.uk

Streaming on a 'pay what you can' basis, *A Gambler's Guide to Dying* by **Traverse Theatre** (Dec 17-Jan 27) is an intergenerational tale of what we live for and what we leave behind about a boy's grandfather who won a fortune betting on the 1966 football World Cup and, when diagnosed with cancer, gambled it all on living to see the year 2000. The play premiered at the 2015 Traverse Festival, winning a Fringe First and the Holden Street Theatre Award, and has since been performed around the world. The production was filmed on location around Glasgow and in the Traverse. Pictured: Gary McNair in the original production
www.traversetheatre.co.uk





After being introduced to metalwork by a Navajo silversmith, Garth Duncan of **Duncan House** moved “lock, stock and bench” from his California home to the Isle of Skye, where he has become a self-confessed addict to knot work patterns introduced to Britain by the ancient Celtic tribes and which find their way into his jewellery and traditional knives. www.duncan-house.com



Inspired by the landscape of North Britain, **Bruce Swanson** designs and makes jewellery which bears Celtic influences, such as this Kilmarton Cuff, named after the Argyllshire glen which is one of the world’s most significant archaeological sites and the centre of the ancient kingdom of Dalriada. www.cairndouna.co.uk

Hand-made

for you & your home



Isle of Skye-based artist **Donna Lockerbie** and her sons have teamed up to clean the island’s beaches by collecting washed up plastic fishing floats and buoys and giving them a second life as works of art painted with acrylics and glosses. www.scoutingforbuoys.co.uk



A graduate in Textile Design from the Glasgow School of Art, **Eve Campbell** has created Wildwood, a collection of screenprinted wall hangings inspired by the colours, shapes and patterns of natural woodland on Scotland’s west coast. www.evecampbell.co.uk



Working from her home studio in a small highland glen in the Cairngorms National Park, **Moira Third** makes embroidered, wall-mounted and 3D artworks by painting onto artist’s canvas then layering with millions of tiny stitches, using just the needle, thread and straight stitch on her sewing machine. Pictured: *Still searching* www.craftscotland.org/craft-directory/makers/moira-third

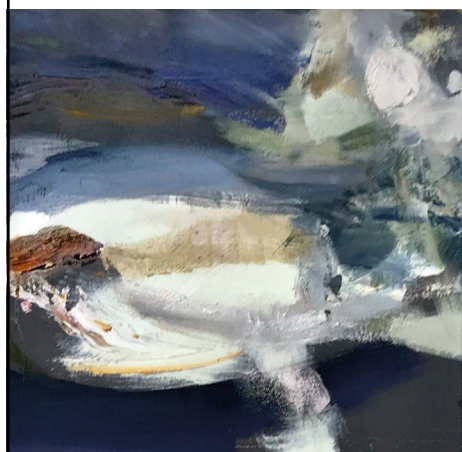


Having originally trained as a blacksmith, **Daniel Freyne** works with iron to create a modern representation of a timeless craft in the form of vessels and sculptural pieces

with the aim of demonstrating the limitless potential of his chosen material and changing viewers’ perspective of it. www.danielfreyne.co.uk

THE QUAY GALLERY

Open daily until Christmas
11am - 5pm



33 High Street, Aberdour, Fife
01383 860602
www.thequaygallery.co.uk

WINTER exhibition

6th November 2020
- 28th February 2021

THE VELVET EASEL GALLERY

298 Portobello High St | Portobello | Edinburgh, EH15 2AS
0781 391 6684 | velveteasel.co.uk | art@velveteasel.co.uk

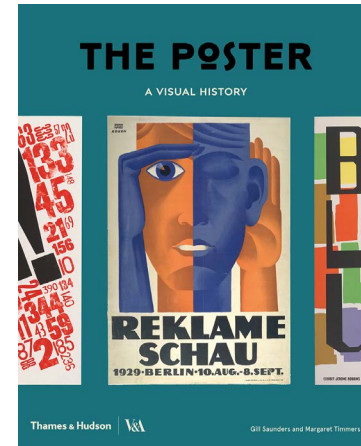
ART 'N' JOY ART PRINTS
PICTURE FRAMERS AND GALLERY FOOTBALL SHIRTS
MEMORABILIA
TAPESTRIES

You name it, we frame it!

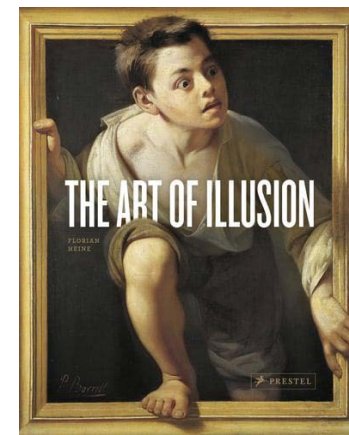
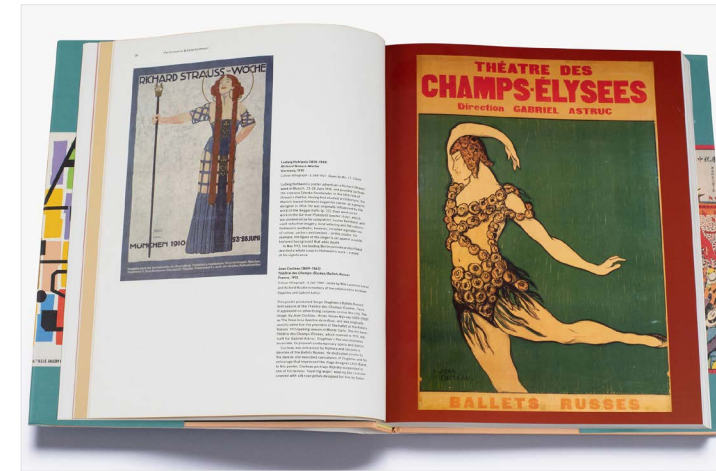
EXPERIENCE 39 YEARS EXPERIENCE

TEL 01294 472 222
WWW.ARTNJOY.CO.UK
52 HAMILTON STREET, SALTCOATS KA21 5DS

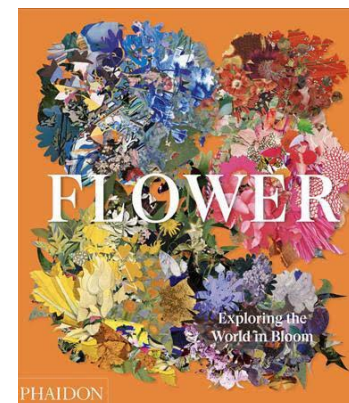
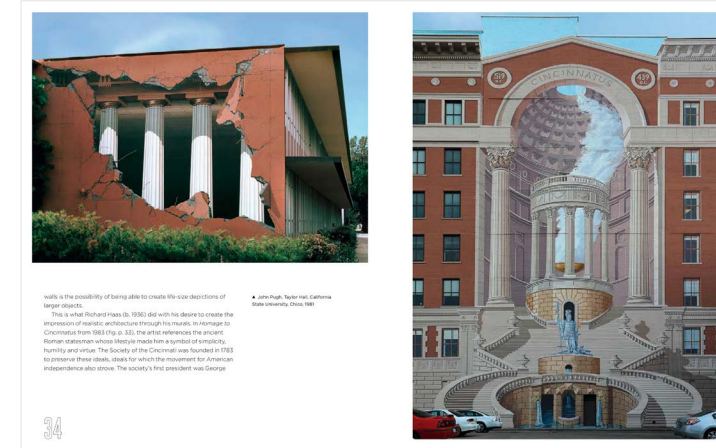
ART BOOKS



The Poster: A Visual History, by Gill Saunders & Margaret Timmers, Catherine Flood & Zorian Clayton, pub. Thames & Hudson Even in the digital age, the printed poster remains an important means of mass communication. Drawn from the collection of the Victoria & Albert Museum, over 300 beautifully illustrated examples show how posters represent the time in which they were produced and how in many instances they have shaped society. Posters have also become collectible classics, charting the ebb and flow of styles such as Art Nouveau, Modernism, Art Deco, psychedelia and punk.





The Art of Illusion, by Florian Heine, pub. Prestel Artists have been tricking us for 2,000 years, from trompe l'oeil frescoes in Roman villas to Duane Hanson's eerily life-like sculptures. This fascinating look at the history of illusionistic art reveals a wide range of techniques designed to fool the viewer. Highlights include the 16th century scenery at the Teatro Olimpico in Vicenza, René Magritte's classic Surrealist works, M.C. Escher's bamboozling drawings, Bridget Riley's seemingly undulating paintings, Georges Rousse's mind-bending constructions and street art which makes pedestrians unsure where to put their feet.




Flower: Exploring the World in Bloom, var. editors, pub. Phaidon From its beautifully embossed cover to its stunning photography, Flower takes readers on a journey across continents and cultures to discover the ways in which artists and image-makers have employed floral motifs throughout history. Spanning a wide range of styles and media – from art, botanical illustrations and sculptures to floral arrangements, film stills and textiles – it includes works by a diverse range of artists, including Cecil Beaton, David Hockney, Leonardo da Vinci, Robert Mapplethorpe, Henri Matisse, Claude Monet, William Morris, Georgia O'Keeffe and David Hockney.



dandelion designs
Stein Isle of Skye 01470592218 dandelion-designs.co.uk

Basking Seals Liz Myhill



Tidal Pool Cathy Myhill

Winter Exhibition at the Archway

Artists include: Caroline Hunter, Victoria Maxwell Macdonald, John Lowrie Morrison, Christine Russell, Louise Oppenheimer, Scott Macdonald, Penelope Timmis.
Ceramics by Jane Adams, Christine Cummings.
Jewellery by Helen Shere, Margaret Ker






The Archway Gallery
7 Union Street, Lochgilphead, Argyll PA31 8JS | 01546 606894
www.thearchway.co.uk



GALLERY 2

Jason Michael Bentley

American painter living in Scotland
Painting, drawing & fine art portraiture



Offering a complete range of mouldings, original art, limited editions and unique gifts. Plus contract picture framing for hotels, pubs and restaurants.
9-5 Mon-Fri, 9-3 Sat
72 John Finnie Street, Kilmarnock
01563 550 303 | [Gallery2Kilmarnock](https://www.gallery2kilmarnock.co.uk)
www.gallery2kilmarnock.co.uk

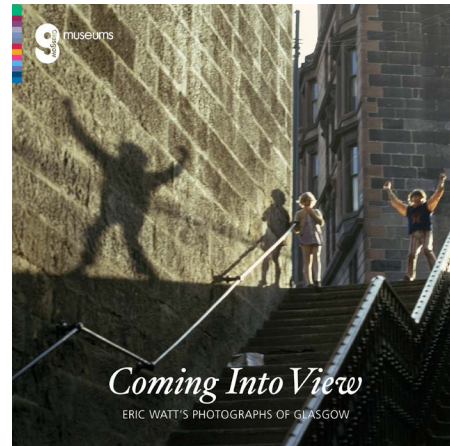
Goldfinch Gallery

COMRIE

Winter Exhibition

Nov 28 - Jan 31st

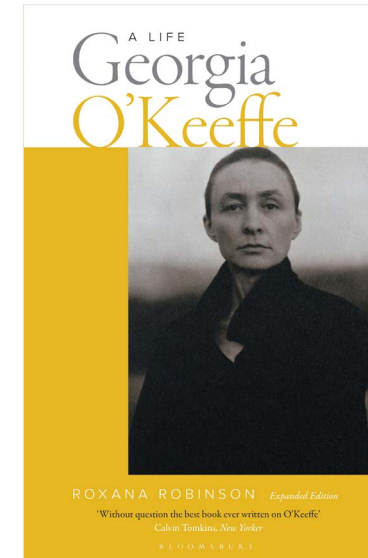
Info@goldfinchgallery.co.uk
Ann Wegmuller RSW RWS
www.goldfinchgallery.co.uk
Drummond Street, Comrie, Perthshire, PH6

Coming Into View: Eric Watt's Photographs of Glasgow, pub. Glasgow Museums
The late amateur photographer Eric Watt took over 3,500 photographs of Glasgow starting in the 1950s. Following his death in 2005 a large part of his archive was gifted to the Glasgow Museums collection

and a selection of almost a hundred of them in both black and white and colour are published here.

Watt documented the rapidly changing face of the city with affection and curiosity, including new highrise housing, the construction of the M8 motorway, the growing South Asian population and Glaswegians enjoying leisure time at the football, horse racing and big city events. The book is divided into themes such as Politics and Protest, Faith, Leisure, Working Life, Shopping, River Clyde and The Changing City. Available to order from www.booksources.net, £12.99



Georgia O'Keeffe: A Life, by Roxana Robinson, pub. Bloomsbury
Making her way in the world, first as a commercial artist and then as an art teacher, Georgia O'Keeffe developed her own original style. Through meeting and subsequently marrying the photographer and art promoter Alfred Stieglitz, she entered a circle of America's most vibrant and boundary-pushing artists – and herself became one of the most successful of them all.

Written with the cooperation of the O'Keeffe family and with access to

sources closed to biographers during her lifetime, this new edition of what has been called 'Without question the best book ever written on O'Keeffe' includes a new foreword by the author describing how she came to meet the artist and publish her biography. Never before seen letters reveal O'Keeffe's joy in the natural world and in her work.

FLAT CAT GALLERY

and cafe

WINTER EXHIBITION

A wonderful selection of work by Artists, Print-makers, Ceramicists, Jewellers and more



All work for sale online.
Gift shop and café/takeaway service.
Mon-Sat 9.30-5, Sun 10-5. Closed Tues-Wed
www.flatcatgallery.co.uk
2 Market Place, Lauder, Berwickshire TD2 6SR
01578 722 808

gallery 27 PICTURE FRAMING & ART Dunbar



A Glimpse of Light by Natasha Morton

GALLERY27 offers professional & creative picture framing and showcases an inspiring mix of Scottish artists and makers

Open Mon to Sat 10 - 4 (Sun by appointment)
8 Spott Rd DUNBAR East Lothian
www.visitgallery27.com
07942 676804
visitgallery27@gmail.com

@visitgallery27

PACK SEND

SPECIALIST SHIPPERS OF FINE ART & ANTIQUES

- Fragile, large or awkward – wherever in the world it needs to go
- Affordable, customised crates that deliver art works safely
- International & UK delivery services
- Cover against loss or damage

0131 201 2244
53 Elm Row, Leith Walk, Edinburgh EH7 4AH
www.packsend.co.uk/edinburgeast

