



December 4, 2020

Issue 142



**14TH ANNUAL
ART & CRAFT
GIFT GUIDE**

**Dozens of gift ideas
for art-lovers!**

Pump by Alan Macdonald
is from the Mixed Winter
Exhibition at **Fidra Fine Art**
in Gullane, East Lothian.

See ARTS NEWS.

COAST GALLERY

Winter Exhibition 'Winter Song'

24 Oct - 12 Feb

Featuring artists Jackie Henderson, Stanley Bird, Ian Mcwhinnie, Nicola Ross, Claire Beattie, Basia Roszak, John McClenaghan and Aliisa Hyslop



Bespoke picture framing – ask about our home consultation service

11-4 Mon - Sat. Closed Sun.
144 High Street, Dunbar, East Lothian
01368 865 141 www.coastart.co.uk



LEITH
SCHOOL
OF
ART

A LEADING SCOTTISH ART SCHOOL IN EDINBURGH

Our high-quality teaching makes Leith School of Art an exceptional place to learn whether you are an established artist or a complete beginner.

NEW SHORT COURSES FOR JANUARY 2021:

- Online lectures: Meeting the Gaze (6 weeks)
Art & Spirituality (11 weeks)
- Digital Photography (Friday afternoons)

YEAR-LONG COURSES | SHORT COURSES | SUMMER SCHOOL

Leith School of Art, 25 North Junction Street, Edinburgh, EH6 6HW
www.LeithSchoolofArt.co.uk | 0131 554 5761 | Enquiries@LeithSchoolofArt.co.uk

4 November to 17 December 2020



Images: Isabelle Huppert in Jean-Paul Salomé's *La Dernière*

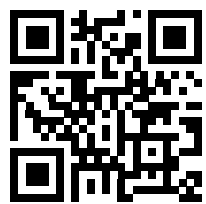
La fête du CINEMA 28 fff

FRENCH FILM FESTIVAL UK

In cinemas and online

Edinburgh Filmhouse,
Aberdeen Belmont Filmhouse,
Glasgow Film Theatre and
other leading independent
cinemas across Scotland

www.frenchfilmfestival.org.uk



THE BALLATER GALLERY

WINTER SHOW

COMMENCES 28TH NOVEMBER 2020

DAVID REID & HIS TEAM INVITE YOU TO VIEW THE NEW COLLECTION
ARTWORK FROM OVER 50 LEADING SCOTTISH ARTISTS



WWW.BALLATERGALLERY.CO.UK

46 BRIDGE STREET, BALLATER, AB35 5QD.
TEL: 01339 755444 EMAIL: INFO@BALLATERGALLERY.CO.UK



Brown & Turner
www.browndturner.co.uk

Christmas Jewellery Auction
12 December | 10am | Live Online

01835 863445 | info@browndturner.co.uk
Viewing 8 – 11 December

CATALOGUE ONLINE 4 DECEMBER
www.browndturner.co.uk

Callan at 60 at the **Dundas Street Gallery** in Edinburgh (Dec 11-17) is a retrospective exhibition of 60 works from the past 25 years by Damian Callan - 30 previous works loaned by collectors and friends and 30 new pieces completed this year, all displayed chronologically.

Callan's work is characterised by movement and dynamism, whether depicting boys fishing from a rock, his family sightseeing in Paris or recent, intimate images of his wife Ruth produced during the first lockdown.

Born in London, Damian Callan initially trained as a scientist before moving to Edinburgh to work with people with learning disabilities. While studying Drawing and Painting at Edinburgh College of Art, he began painting bathers in the wave machine at Leith Waterworld. Trips to the west coast of Scotland and the Outer Hebrides provided rich material, such as children battling waves on a beach. He also offers online painting and drawing courses and has a series of instructional videos. Pictured: *New surf* www.damiancallan.com



New works by over 40 leading Scottish contemporary artists are arriving weekly at the **Ballater Gallery** on Royal Deeside. The Winter Show Catalogue features pieces ranging in price from £300 to £30,000, whether a classic oil by Jack Morrocco (pictured: *Rio del Malpaga, Venice*), a still life by Andrew Thompson, a large floral study by Marion Drummond or a bronze sculpture by David Meredith. Private viewings, delivery to your home or office for approval and worldwide shipping are all available. www.ballatergallery.co.uk



A rolling exhibition schedule combining contemporary Scottish art with work by some of the most influential Scottish names from the past hundred years or so has proven a popular combination at **Fidra Fine Art** in Gullane, where the *Mixed Winter Exhibition*



JAMES FULLARTON

nov 26th - dec 24th, 2020

ROGER BILLCLIFFE GALLERY

134 blythwood street
glasgow g2 4el
0141 332 4027
www.billcliffegallery.com

The **Edinburgh Quartet** has five new recordings to view online, filmed over the summer at the French Institute in the capital: Josquin des Prez' *Mille regretz*, three folk settings by Edward Harper (*The Lowlands of Holland*, *The Ash Grove* and *Mairi's Wedding*) and a passage from Joseph Hayden's *String Quartet No. 61 in D Minor*. Go to [YouTube.com](https://www.youtube.com) and search Edinburgh Quartet.



Next year will be the Edinburgh Quartet's 60th season. The programme will include classics by the likes of Beethoven and Haydn together with works by contemporary composers that the quartet has performed over the last six decades. www.edinburghquartet.com



Kelly-Anne Cairns: Butterfly Effect at **Fire Station Creative** in Dunfermline (Dec 6-Jan 3, 2021) features a selection of figurative paintings by the Aberdeen-based artist and graduate of Gray's School of Art, whose work has been included in the BP Portrait Award and was recently short-listed for the Scottish Portrait Awards. Pictured: *Unmasked*. www.firestationcreative.co.uk



The **Morningside Gallery** in Edinburgh has new paintings and ceramics, including: landscapes by David Smith RSW, whose scenes of the west coast and Highlands and Islands of Scotland are steeped in the 'plein air' tradition; highly collectable ceramic vessels by Tony Laverick (pictured), whose geometric motifs are inspired by artists such as Kandinski and Mondrian; more of Gordon Wilson's humorous little figures called 'biddies'; a few remaining pieces from Alex McCarthy's limited edition Pantone Blue 2020 collection of vessels with surfaces inspired by organic forms such as tree bark, rock, cracking paint and even marine life; vignettes full of drama and comedy by Joe Hargan PAI PPAI that he has likened to stage sets; glass vases by Thomas Petit that he sandblasts to create colours and patterns resembling pebbles washed up on the beach; fruit studies by Raquel Alvarez Sardina inspired by the Spanish Baroque; and a large group of ceramic robins, blackbirds and wrens by Simon Griffiths. www.morningsidegallery.co.uk



THE STREAM, LAGDUFF LODGE.

"STRANGE PATH"

A SOLO SHOW BY
NICHOL WHEATLEY

19TH NOVEMBER
- 6TH DECEMBER
GROUSE AND CLARET,
KINROSSHIRE

[WWW.NICHOLWHEATLEY.COM](https://www.nicholwheatley.com)

CELEBRATING SCOTTISH ART SINCE 1862

ST ANDREWS
fraser gallery

Francis Boag

Summer Dreaming
Mixed media on canvas 80cm x 120cm

53 South Street, St Andrews hello@frasergallery.co.uk

TORRANCE GALLERY



Our beautiful Winter Exhibition featuring over 40 gallery artists, plus some very Special Guests...
21st November to 2nd January 2021

www.torrancegallery.co.uk
36 Dundas St, Edinburgh, EH3 6JN
0131 556 6366
mail@torrancegallery.co.uk

EION STEWART FINE ART



Northern Lights
Mixed Winter Show
5th Dec - 27th Feb

55 Allardice Street, Stonehaven, AB39 2AB
01569 780606
art@eionstewartfineart.com
www.eionstewartfineart.com

A time and a place

A new collection of paintings and limited edition prints

Alexander Millar transports his 'Youth and Young Manhood' characters to iconic city locations that have been very important in his life – from the High Level Bridge in Newcastle to the Trocadero Gardens in Paris.



www.alexandermillar.com

Princes Square
Buchanan Street
Glasgow
0141 221 7565



55-59 Grey Street
Newcastle
upon Tyne
0191 230 4440

In place of their usual annual show, which has been cancelled due to the pandemic, **Visual Arts Scotland** is presenting the first members' winter show. **Flow** (online until Jan 21, 2021) features over 240 paintings, jewellery pieces, sculptures and mixed media works in a variety of disciplines, styles and techniques.



Founded in 1924 as an organisation for women artists, VAS is now open to all craftmakers, designers and applied arts practitioners with membership categories for artists at all stages in their careers, from new graduates to established names. Pictured: Cassandra Harrison, *To Haymarket*
www.visualartsscotland.org




Castle Fine Art has relocated its Edinburgh gallery into a light-filled, two-floor space a few doors away in Multrees Walk, where it has a wide range of limited edition prints, original artworks and sculptures by 'celebrity artists' such as Ronnie Wood, Bob Dylan and Billy Connolly. There are another 40 galleries in the UK-wide Castle Fine Art chain, which is preparing to mark its 25th anniversary.

Says Group Managing Director Ian Weatherby-Blythe: "It's no secret that the pandemic has hit the high street hard this year. With more people working from home, we have found they want to be surrounded by beauty and something out of the ordinary. Making art accessible to everyone has always been the cornerstone of our business. So even if you're a newcomer to art collecting, we have the expertise to point you in the right direction, whatever your budget or style." www.castlefineart.com

Callan at 60

A retrospective of work from the past 25 years and brand new work from 2020



11-17 Dec. Dundas Street Gallery, Edinburgh.
Includes work on loan from private collections and new work for sale.
Opening events planned for Fri 11 & Sat 12 (subject to regulations).
Also viewable online with an accompanying catalogue.
www.damiancallan.com

resipole
studios
FINE ART GALLERY

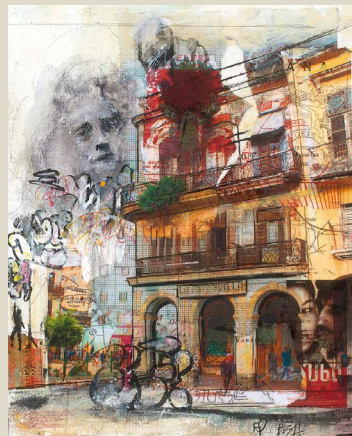


small works
www.resipolestudios.co.uk
loch sunart | acharacle | argyll | ph36 4hx



Annual Christmas Show 2020

ALL WORKS UNDER €500



Havana by Adam de Ville & Anna Allworthy



Yellow Lake by Conor Gallagher



La Belle Endormie by Corine Ko

The Doorway Gallery,
24 South Frederick Street, Dublin 2, D02 XP30
+353(0)1764 5895

www.thedoorwaygallery.com

Mon - Sat: 12 - 5pm
Private appointments available



FRAMES GALLERY



Golden Moon, screenprint by Anne Skinner

Winter 2020 Mixed Exhibition

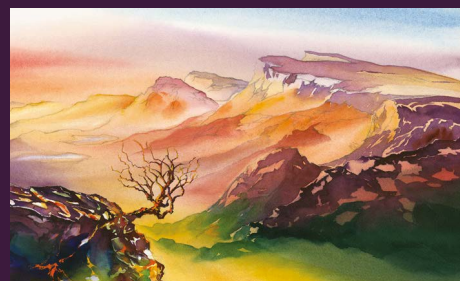
21st November—30th January

paintings, printmaking, ceramics, jewellery and glasswork

10 Victoria Street Perth PH2 8LW | framesgallery.co.uk | info@framesgallery.co.uk | 01738631085

Jonathan Wheeler Art

Originals
Commissions
Giclée Prints



www.jonathanwheelerart.com | T. +44 (0) 1309 692 202

ARTS NEWS

The catalogue is now online for the **Christmas Jewellery Auction** at **Brown & Turner** in Jedburgh (Dec 12) alongside an **Antiques and Collectables Auction** on the same day.

Watches feature strongly among the 60 jewellery pieces on offer, including a Rolex Art Deco 9ct White Gold and Diamond Ladies Cocktail Wristwatch and an 18ct Gold Full Hunter Pocket Watch. Vintage watches with a reputable name are highly sought after by collectors and the style and quality of Art Deco pieces are proving particularly popular with modern day buyers.

Other notable pieces in the auction include an Art Deco Emerald and Diamond Ladies Ring (pictured) and an elegant Diamond Tennis Bracelet in Art



Deco style. Brooches also feature strongly, including a Sapphire and Diamond Spray Brooch, a Diamond and Emerald Crescent Brooch, an Art Deco Diamond Brooch in a scrolling ribbon form and a Victorian Ray Star Diamond Brooch.

Individual estimates range from £40 to £1,500. Viewing is available Dec 8-12 by appointment.

www.browndturner.co.uk



Edinburgh's **Royal Lyceum Theatre** is offering eight pre-recorded, 15-minute Lyceum Christmas Tales (free to download, released every other day Dec 1-15) followed by four live-streamed stories performed with live music on the Lyceum stage (£10 per show, Dec 16-20). All 12 stories were commissioned from Scottish writers and performed by Scottish actors. Plans to allow a limited audience to attend the live performances were cancelled due to Scottish Government safety measures.

Based in its beautiful Victorian theatre built in 1883, the Lyceum is the leading producing theatre in Scotland and one of the UK's most prolific theatre companies. Pictured: Cal MacAninch performs Morna Young's *A Fairy Tale*. www.lyceum.org.uk

Simon Laurie | Imagined Landscape

FIDRA FINE ART

MIXED WINTER EXHIBITION

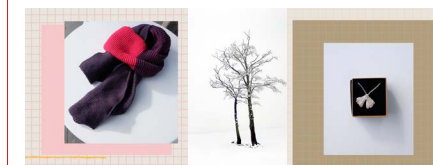
5 DECEMBER 2020 TO 28 FEBRUARY 2021

Featuring work from:
Claire Beattie, George Birrell, Georgina Bown, Chris Brock, Davy Brown, Alison Burt, Dominique Cameron, Alan Connell, Jimmy Cosgrove, Matthew Draper, Michael Duming, Ronnie Fulton, George Gilbert, Andy Heald, John Kingsley, Simon Laurie, Sarah Lawson, Steven Lindsay, Alan Macdonald, Carolynda Macdonald, Neil Macdonald, Rachel Marshall, Ailie McMurrugh, Alison McWhirter, Sandy Murphy, Jim Rae, Naoko Shibuya and many more.

7-8 Stanley Road, Gullane, EH31 2AD
t: 01620 149389 | e: info@fidrafineart.co.uk | www.fidrafineart.co.uk



9 Dook Street, Dundee, DD1 4BT.
Open Monday to Saturday, 10-4pm



Unique Gifts, Artists, Makers,
Exhibitions & Events



BORDERS The art of **Marta Utsler**, from larger-sized canvases to smaller works on paper, will surely be an effective way to create a focal point. www.martautsler.com



ISLE OF SKYE **Dandelion Designs & Images Gallery** has a wide selection of limited edition linoprints, collagraphs and mixed media paintings as well as locally hand-made art and craft, photography, jewellery, cards and prints. www.dandelion-designs.co.uk

EDINBURGH **The Nomads Tent** can brighten up those chilly winter days with one of their gorgeous reversible kantha scarves from Jaipur, made from recycled silk saris. Choose from a lovely selection of colours and patterns. www.nomadstent.co.uk



DUMFRIES & GALLOWAY Maureen Briggs of **High St. Gallery** in Kirkcudbright has produced a range of unique, hand-crafted découpage mirrors, incorporating digital and original artwork and 'trompe l'oeil' elements. www.highestgallery.co.uk



FIFE Wayne Galloway's work can be seen at the St Andrews-based **Sproson Gallery**, which also incorporates a family-run, bespoke custom picture framing business. View their selection of artists and contact details at www.sprosongallery.com



EDINBURGH On the southside of Edinburgh, **Art & Craft Collective** showcases the work of over 60 artists and crafters, with original art to pottery and more - always original and often unique. Open Tuesday - Sunday. www.artcraftcollective.co.uk



FIFE **Tatha Gallery** in Newport-on-Tay can brighten up your life with a wonderful array of smaller scale works, ceramics and textiles - a great way to support local artists. www.tathagallery.com



FIFE **The Quay Gallery** in Aberdour offers a carefully curated selection of paintings, prints and objets d'art, all sourced from the UK. Open Easter until Christmas. www.thequaygallery.co.uk



ABERDEEN Let the team at **Gallery Heinzel** help you choose the perfect original gift for your partner, family or friends. They can also arrange delivery anywhere in the world. www.galleryheinzel.com



PERTHSHIRE Based in the beautiful village of Comrie, **Goldfinch Gallery** features new and exciting works in every type of media, such as Hetty Williams' unique resin lamps with LED lighting. www.goldfinchgallery.co.uk ▶▶▶



EAST LOTHIAN **Coast Art** in Dunbar has cute and quirky ceramics by Ans Vink, hand-crafted in the Netherlands and perfect for any wall or mantelpiece. www.coastart.co.uk



AYRSHIRE **Gallery 2** in Kilmarnock has some lovely work on show such as Lorna Reid's Jackanory in felt wool. Based in West Kilbride, Lorna worked for large knitwear companies and continues to design, make and teach. www.gallery2kilmarnock.co.uk

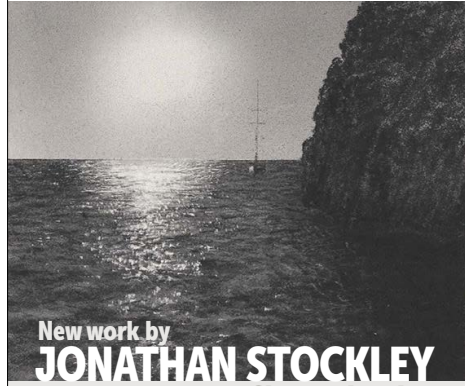


ABERDEENSHIRE **Milton Art Gallery** at Milton of Crathes, Banchory has work by a range of makers, including Sarah Koetsier's hand-thrown porcelain pieces, which look lovely together or on their own. www.miltonart.com



PERTHSHIRE **Aberfeldy Gallery** features contemporary art by established and emerging Scottish artists and craftmakers, landscapes, wildlife art and photography, pottery, glasswork and jewellery. Photo: Adam Seward. www.aberfeldygallery.co.uk

SOLO GALLERY



New work by
JONATHAN STOCKLEY
Charcoal artist

Sat 5 Dec to Christmas
1 Year Anniversary Exhibition

51 High Street, Innerleithen EH44 6HD
07495 710687
www.sologallery.co.uk
Instagram: @sologallery
Facebook: @sologallery51

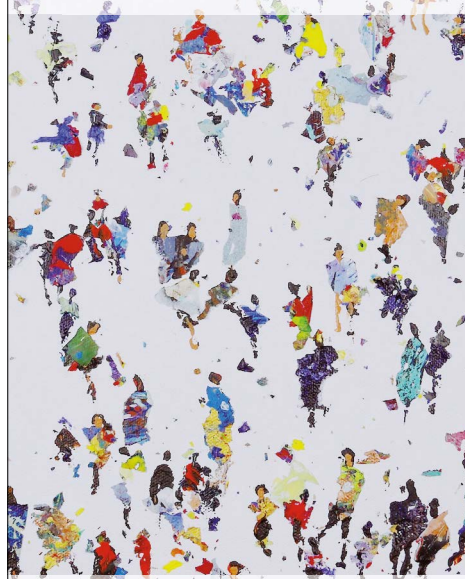
Winter Exhibition at the Archway

Artists include: Caroline Hunter, Victoria Maxwell Macdonald, John Lowrie Morrison, Christine Russell, Louise Oppenheimer, Scott Macdonald, Penelope Timmis.
Ceramics by Jane Adams, Christine Cummings.
Jewellery by Helen Shere, Margaret Ker



The Archway Gallery
7 Union Street, Lochgilphead, Argyll PA31 8JS | 01546 606894
www.thearchway.co.uk

dockside GALLERY



Neil McBride
Hometime (Detail)
01289 302437 | art@docksidegallery.co.uk
84 Main St, Tweedmouth, Berwick-upon-Tweed TD15 2AA

ARTISAN

Mixed Exhibition - 28 Nov - 10 Jan

Featuring:
Georgia Allan



13-15 Bank St, Aberfeldy, PH15 2BB | www.artisanand.co.uk
angela@artisanand.co.uk | 07703 733230 | 01887 822700



ARGYLL The Small Works show at **Resipole Studios** in Acharacle offers unique gift ideas for the art-lover in your life, including quality ceramics, painting, sculpture and more, for under £500. www.resipolestudios.co.uk



EDINBURGH The Winter Exhibition at the **Torrance Gallery** in Edinburgh features a cornucopia of original artwork by over 40 gallery artists, including this oil by Marion Drummond. They also have a wealth of jewellery, ceramics, bronze and glassware. www.torrancegallery.co.uk

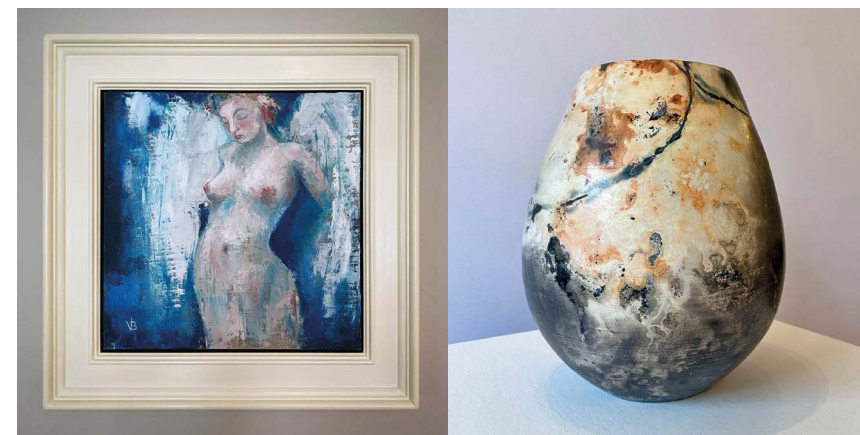


BORDERS Solo Gallery in Innerleithen has a range of work by Scottish artists and makers. These beautiful, smoke-fired ceramic gannets are from a collection by Vivienne Sillar. www.sologallery.co.uk



GLASGOW The **Roger Billcliffe Gallery** has a collection of over a hundred small (20x20cm) paintings by some of Scotland's best artists. Displayed unframed, they make perfect gifts. www.billcliffegallery.com

PERTSHIRE A series of eclectic exhibitions at **Artisanand** in Aberfeldy showcases a wide range of media and styles from the quirky to the traditional by over 50 local artists. These paper and willow sculptures are by Georgia Crook. www.artisanand.co.uk



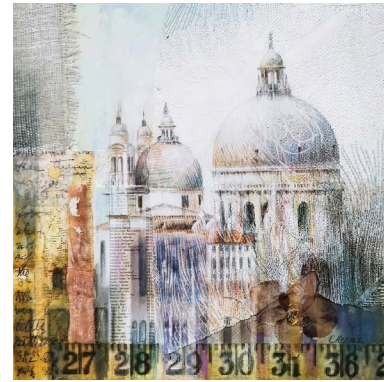
ABERDEENSHIRE Eion Stewart Fine Art in Stonehaven is a contemporary art gallery and frame-maker, showing some of the best Scottish-based painters and makers in a year-round exhibition programme. www.eionstewartfineart.com



ABERDEENSHIRE Larks Gallery in Ballater on Royal Deeside has a range of work by contemporary artist Lois Carson. A graduate of Gray's School of Art, she is pushing the boundaries of her work. www.larksgallery.com



EDINBURGH Allium in South Queensferry has a wide and ever-changing range of original art, ceramics, glass and more by Scottish artists and makers. This silver jewellery (pictured) is made in Allium by 14Ten Designs. www.alliumqueensferry.com



AYR The Maclaurin Gallery celebrates the creativity of a group of Ayrshire artists and makers, and has wonderful gift ideas, Clare Rennie's misty ethereal scenes of Venice. www.themaclaurin.org.uk



EDINBURGH The doors are open daily at **Edinburgh Art Shop** or you can shop online for all types of art and craft materials. Gift vouchers, special offers and discounts for students and art groups available. www.edinburghartshop.co.uk



DUBLIN & ONLINE The Doorway Gallery has a winter show to round off 2020, boasting a huge variety of original figurative and colourful paintings to choose from, as an ideal gift or a great investment. www.thedoorwaygallery.com



EDINBURGH Encourage a friend to try something creative with a gift voucher for **Leith School of Art**, where the programme includes Weekend Workshops, Day & Evening courses and Summer Schools. www.LeithSchoolofArt.co.uk/gift-vouchers



BORDERS Among the wide range of works on sale at **Flat Cat Gallery** in Lauder is Standing Hare and Reclining Hare, sculpted in clay by Bernadette Wood, capturing the hares' magical, mystical nature. www.flatcatgallery.co.uk



ARGYLL & BUTE The Archway Gallery in Lochgilhead has paintings, prints, ceramics, jewellery and crafts by artists and makers from Scotland and beyond, such as these traditional, hand-crafted figures from Mexico. www.thearchway.co.uk



DUNDEE & ANGUS You can find ceramics by **Fran Marquis** on her new website, available to buy for Christmas and beyond, plus vouchers for pottery lessons in Arbroath to use when classes are possible again. www.franmarquis.co.uk



PERTSHIRE This fabulous teapot by David Pantling is available in different patterns from **Frames Gallery** in Perth, from a range which also includes mugs, jugs, toast racks and a butter dish. www.framesgallery.co.uk



DUNDEE Gallery Q can fulfil all your art desires with paintings, prints, glass, ceramics and jewellery. They also offer gift vouchers, free postage within the UK, and interest-free payment by instalment with the Own Art scheme. www.galleryq.co.uk



EDINBURGH The **Velvet Easel Gallery** in Portobello showcases a wide range of contemporary paintings, glasswork, ceramics and jewellery by local artists and craftmakers to suit all budgets. www.velveteasel.co.uk



KINROSS-SHIRE Beautiful landscapes by **Nichol Wheatley** sell out quickly due to heavy demand. From January he is available for new commissions. www.nicholwheatley.com



FIFE & TAYSIDE With shops in Cupar and Dundee, **Maisie & Mac** stocks prints, jewellery and ceramics as well as work in wood, glass and textiles by UK artists and craftmakers. www.maisieandmac.com



AYR The Maclaurin Gallery celebrates the creativity of a group of Ayrshire artists and makers, and has wonderful gift ideas, such as Janet Laurie's jewellery, incorporating semi-precious gemstones. www.themaclaurin.org.uk



GLASGOW & NEWCASTLE Paintings, prints, cufflinks, cushions and mugs are the perfect gifts to suit every taste and budget, from **Alexander Millar**, at their Glasgow and Newcastle galleries, and at www.alexandermillar.com

MILTON ART GALLERY



Ceramic Lanterns

A warm inviting independent gallery offering a wide range of Scottish artists, designers and makers.

New Winter Collection
 Malcolm Appleby
 Kanita Sim & Bob Emmett



Kanita Sim - Cove

Mon-Sat 10.30-4.30, Sun 10.30-4

Milton of Crathes, Banchory AB31 5QH
 info@miltonart.com 01330 844664
 www.miltonart.com



Malcolm Appleby - Primrose Bangle

Yvonne Hair - Quiet Reflection, Loch Tay

Tues-Sat 10am-5pm.
 Closed Sun & Mon

138 South Street
 St Andrews, KY16 9EQ
 01334 474331
 info@sprosongallery.com
 www.sprosongallery.com
 sprosongallery

Now introducing
A Scottish Winter Collection

A contemporary art gallery in St Andrews

TATHA GALLERY

Bring in the Light

tathagallery.com
 Mixed Winter Exhibition 2020
 14 Nov-24 Dec



DUMFRIES & GALLOWAY Clience Studio in Castle Douglas features seascapes and landscapes by owner/artist Angela Lawrence, which are also reproduced on a wide range of gift items. Vouchers are available and commissions accepted.
www.cliencestudio.co.uk



EDINBURGH & GLASGOW
 The **Scottish Design Exchange** is a social enterprise with two stores and an online shop featuring work by over 300 independent artists, craftmakers and designers, who receive 100% of the proceeds from every sale.
www.scottishdesignexchange.com



EAST LOTHIAN
 Exhibitions at **Fidra Fine Art** in Gullane combine contemporary Scottish art with work by some of the most influential Scottish names from the past hundred years or so.
www.fidrafineart.co.uk



ONLINE Watercolourist **Jonathan Wheeler** vividly captures the beauty of the Scottish countryside and its castles with a brightness and depth which have become his unique signature.
www.jonathanwheelerart.com

JOHN LOWRIE **MORRISON O.B.E.**

Jolomo

ON THE EDGE: THE SCOTTISH ISLES
 7TH - 29TH NOVEMBER 2020

THE GLASGOW GALLERY
 182 BATH STREET GLASGOW G2 4HG
 0141 333 1991 info@glasgowgallery.co.uk
www.glasgowgallery.co.uk

Twice gifted

Some people have too much talent.

Not content with making their mark in one field, musicians, actors, comedians, politicians and others have also turned their hand to art. In fact, for many, art or photography was their first calling.

This seems particularly true of music-makers, with the likes of John Lennon, Pete Townshend, Bryan Ferry, Freddie Mercury, Eric Clapton and Joni Mitchell all exploring their creativity initially in art school.

Here we take a look at some of the visual work produced by celebrities known mainly for a different pursuit and ponder what might have been had they taken a different path.



Billy Connolly discovered a talent for art later than most, when one cold, rainy day in 2007, while on tour in Montreal, he bought some felt tip pens and a sketchbook and retreated to his hotel room.

He first exhibited in 2012 with the suitably titled *Born on a Rainy Day* collection of pen and ink drawings mainly depicting figures swathed in bandages. Connolly's characters are faceless, anonymous, seemingly devoid of emotion or expression, yet make an emotional connection with the viewer.

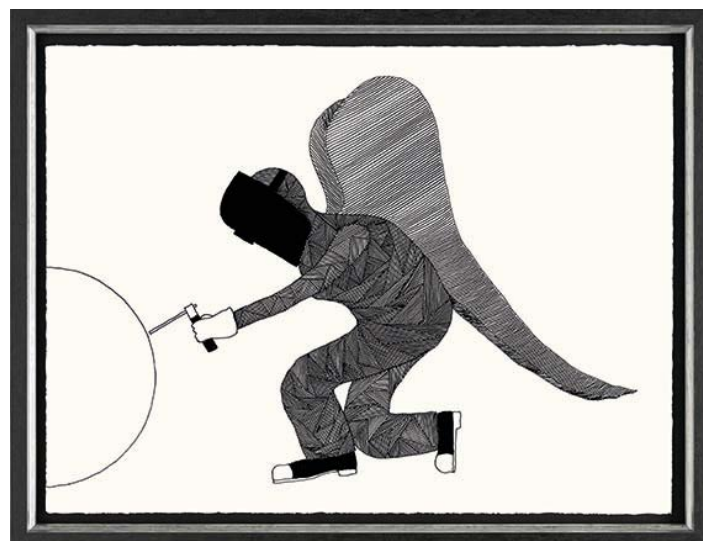
The process he uses is similar to that of the Surrealist Automatism movement, whereby the artist allows the hand to move randomly across the paper or canvas without the intent to create anything specific.

Connolly describes his artistic process as something he cannot explain, but which seemingly takes him over as he begins to create. He says: "Art, for me, bears no relation

In 2002 **Nelson Mandela** revisited Robben Island, where he had been incarcerated for 17 years, in the company of a photographer, who shot images of Mandela's prison cell as well as the guard towers, lighthouse, church, quarry, Table Mountain and other scenes.

Mandela then completed over 20 sketches from the photographs, observed by a young South African art teacher, Varenka Paschke, who guided him through basic composition and colour application.

Mandela himself did not complete any final pieces, but a series of separations which, when overlaid on the strong, black



to comedy or music. My art is pure and 'unjudged'. I am creating it for myself. It is personal and private, whereas with a film, comedy show or music you expect people to be critiquing, watching, assessing. Art is different. It liberates you."

One of his designs, *Blue Angel*, recently appeared on the wrapper of a limited edition chocolate bar released by the Edinburgh-based artisan chocolatier COCO to raise funds for NHS charities. Pictured: *And on Monday, God Made the World* www.castlefineart.com

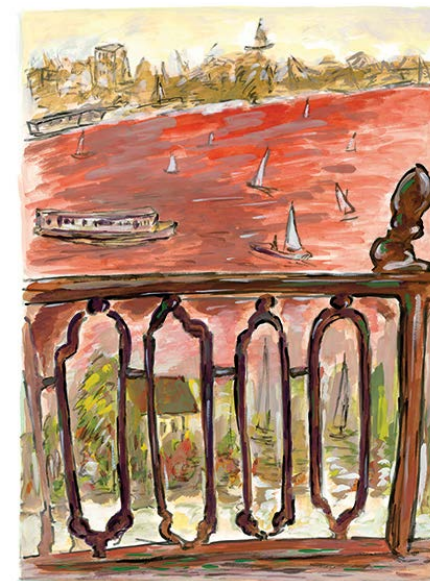
crayon lines providing the guide, created the final pictures. Sorted in five editions, they symbolised the struggle in South Africa and the triumph over the tyranny of the apartheid years.

Although the subsequent prints depicted places where many suffered, the colourful renderings represented hope prevailing over adversity and brutality and a symbolic link with a reality outside the harsh prison regime. When sold, they raised millions of pounds for the Prince of Wales Charitable Foundation and a series of African children's charities. Pictured: *The Cell*

Bob Dylan dates the origins of his work as a visual artist to the early 1960s. A few drawings reached the public gaze with album covers like *Music From Big Pink* (1968) and *Self Portrait* (1970).

In 1974 he studied with Ashcan School tutor Norman Raeben, who emphasised the importance of 'perceptual honesty' – painting life as it is seen, not imagined. Dylan says of Raeben: "He put my mind and my hand and my eye together in a way that allowed me to do consciously what I unconsciously felt."

While on tour between 1989 and 1992, Dylan created a collection of drawings capturing his chance encounters and observations, including portraits, interiors, landscapes, still lifes, nudes and street scenes. They were done, he said, "to relax and refocus a restless mind".



These drawings formed the basis of watercolour and gouache paintings in the 2008 collection *The Drawn Blank Series* – vibrant, expressive works with the same image painted several times in different colours and tones. Later collections include *The Beaten Path*, *Train Tracks*, *Mondo Scripto* and *The Brazil Series*.

Marisha Pessl wrote in the *New York Times*: 'Dylan's brush strokes are like his voice: straightforward, rough, occasionally fragile, but always intent on illustrating the treads of human experience...He's not after artistic perfection, but something larger – a moment, a feeling.' Pictured: *Vista From Balcony*, 2012 www.castlefineart.com



As a teenager, **Leonard Nimoy** developed photographs in his family's bathroom-turned-darkroom. He went on to study at the University of California in Los Angeles in the 1970s under Robert Heineken, later receiving an artist in residence appointment at the American Academy in Rome.

His first book of photography, *Shekhina*, published in 2002, sold out of its first printing in less than a month. Based on the concept in the Kabbalah of the female manifestation of God, it explores the provocative and complex relationship of the

spirit and the flesh.

One critic wrote: 'Nimoy is igniting an artistic debate...over art and censorship that echoes the battles that swirled over Mapplethorpe and other artists like Andres Serrano and Chris Ofili, who created controversial religious imagery.'

Nimoy's photography is included in many museum collections, including the Museum of Fine Arts in Houston, the Los Angeles County Museum of Art and the New Orleans Museum of Fine Art. Pictured: *Shekhina* www.rmichelson.com ▶▶▶

A keen watercolourist, **Prince Charles** has depicted many scenes around the Royal homes at Balmoral, Sandringham, Highgrove and Windsor Castle as well as landscapes of favourite places around the world, such as Greece, Switzerland and Arabia. Signed, limited edition lithographs based on his watercolours are sold to raise money for the Prince of Wales Charitable Foundation. Pictured: *Ballochbuie, Balmoral* www.belgraviagallery.com



SCOTTISH DESIGN EXCHANGE



The Scottish Design Exchange is a social enterprise business, supporting over 300 artists and designers between two stores in Edinburgh and Glasgow and an online store.

As a not-for-profit business, every sale we make helps to support local artists and designers.

We exist to line their pockets, not ours!



Edinburgh store
51 George Street

Glasgow store
Buchanan Galleries

Shop online
scottishdesignexchange.com/
shop-1

scottishdesignexchange.com

Robert McAulay, White Roofs III

GALLERY HEINZEL

CONTEMPORARY ART

WINTER EXHIBITION

14th November to March 2021

Gift advice, wrapping & delivery service

24 Thistle Street, Aberdeen AB10 1XD 01224 625629 info@galleryheinzel.com
Open Tues to Sat from 10am www.galleryheinzel.com

f t own art

Seascape and Landscape Paintings by Angela Lawrence

Angela Lawrence, Sunset, Rockcliffe

Clience Studio

Highlands, Islands, Galloway and Cumbria feature at this artist's studio and gallery.

Angela works in a variety of sizes and also presents a wide selection of signed archival prints as well as art gifts and calendars from her Galloway painting.

Paintings, Prints and Commissions. Mon-Sat 10.30-5, Tues 10.30-4

By the Clocktower
212 King Street
Castle Douglas DG7 1DS
07902 301 883
www.cliencestudio.co.uk
f angelalawrencecliencestudio

One household at a time are welcome to drop in or book a time

CELEBRITY ARTISTS

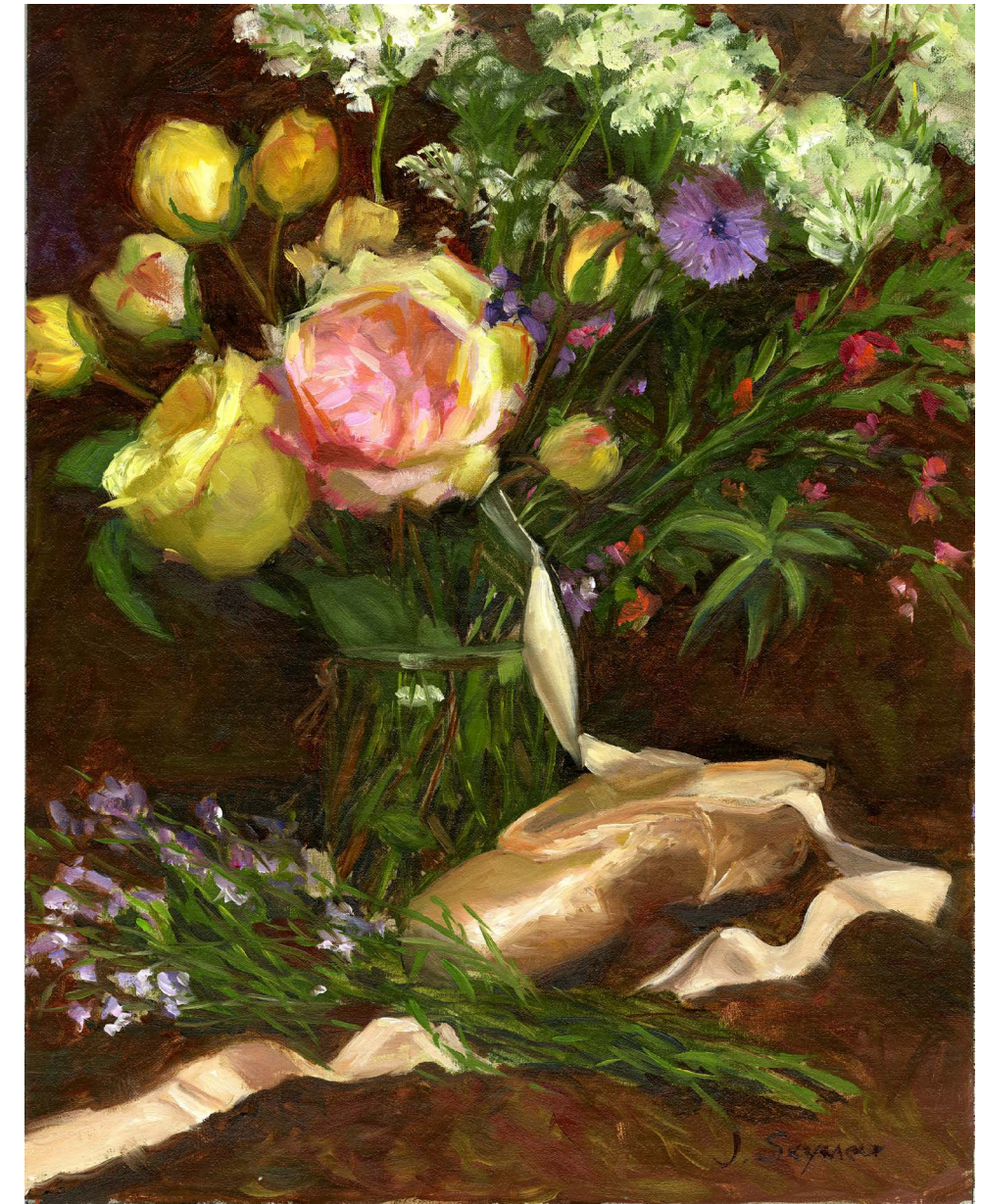
When not acting, **Jane Seymour** can be found in her Malibu studio, producing delicate watercolours, vibrant oil paintings, pastels and bronze sculptures. She has her own gallery in Los Angeles and has exhibited in numerous galleries across North America.

She began painting during a period of personal challenge, her art becoming part of a healing process. She emerged as an accomplished artist, with floral studies, landscapes and portraits of her family as recurring subjects.

Seymour has also created set designs for the Houston Ballet and has been selected three times as an official Olympic artist – for the 2006 Turin Winter Olympics, the 2008 Beijing Summer Olympics and the 2010 Vancouver Winter Olympics. Pictured: *Cinderella's Slipper*, oil
www.janeseymour.com

Rolling Stones guitarist **Ronnie Wood** is the epitome of artist-turned-rock 'n' roller. Having trained at Ealing College of Art, he has continued to pursue these two parallel interests. He has produced landscapes, portraiture and abstract and architectural works in a variety of media, including charcoal, oil, watercolour, spray paint, pastel and acrylic.

He says: "There is no kind of therapy like the one you have from starting and seeing a picture through to the end. Unlike music, it's a solo effort. There's no one else to blame." Wood's paintings often portray band-mates Mick Jagger, Charlie Watts and Keith Richards. Pictured: *On Stage Suite* - Twang
www.castlefineart.com



The actor **Pierce Brosnan** has painted for many years, his abstracts, figurative works and landscapes in acrylic and oil exploding with colour. Self-taught, he does not sell his work privately, but often donates pieces to charity auctions. One of them, a portrait of Bob Dylan, sold for \$1.4 million in 2018 to benefit the amFar Institute for HIV Cure Research.
www.piercebrosnan.com/artist

WWW.NOMADSTENT.CO.UK



RUGS & INTERIORS
DECORATIONS & GIFTS



ONLINE & IN STORE

Tues-Sat 10-5, Sun 12-4
21 St Leonard's Lane, EH8 9SH
info@nomadstent.co.uk, 0131 662 1612

WINTER exhibition

6th November 2020
- 28th February 2021

THE VELVET EASEL GALLERY

298 Portobello High St | Portobello | Edinburgh, EH15 2AS
0781 391 6684 | velveteasel.co.uk | art@velveteasel.co.uk

Allium

GALLERY - GIFTS - INTERIORS

Winter Mixed Exhibition
Friday 6 Nov - early Jan

Showing Scottish artists and makers

4A Hopetoun Road, South Queensferry, EH30 9RA
0131 319 2140 www.alliumqueensferry.com
Wed-Mon 11-4.30 Appointments outwith these times



Actor **Jeff Bridges** took his first photograph in 1976 on a movie set during the filming of the *King Kong* remake. He says: "Actors often find things to distract themselves between takes, so they don't overthink the work they have to do and are able to relax. Some knit, I take photographs."

He began to use a Widelux camera, explaining: "I love the idea that there is so much information on the negative. Scanning an image might take you from a very quiet, private world on the left, to a very chaotic

and public one on the right. It's a good kind of snapshot camera, which is fine, since I don't try to differentiate between a snapshot and some other kind of photograph. Another reason I like the Widelux format is its similarity to the format you see in the cinema."

Bridges has received an Infinity Award from the International Center for Photography. Pictured: Scene from the set of *True Grit*

Goldfinch Gallery
COMRIE

Winter Exhibition
Nov 28 - Jan 31st

Info@goldfinchgallery.co.uk
Ann Wegmüller RSW RWS
www.goldfinchgallery.co.uk
Drummond Street, Comrie, Perthshire, PH6

Perhaps more cognisant than anyone else in the popular music field of the power of the visual image, **David Bowie**, a product of Bromley School of Art in London, always blended his musical output with a strong art and design element in album artwork and set

and costume design. Often influenced by Surrealism and German Expressionism, he produced paintings, sketches, mixed media constructions and installations and his images have been reproduced on wallpaper, linocut prints and limited edition postcards.

His artwork has been frequently exhibited, including at the Royal College of Art and the Saatchi Gallery in London, the Florence Biennale and the New Expressionist Exhibition in Berlin. Pictured: Self-portrait in the pose adopted for the album cover of the *Heroes* album © The David Bowie Archive 2012



Maisie & Mac
Gifts, Art & Contemporary Craft



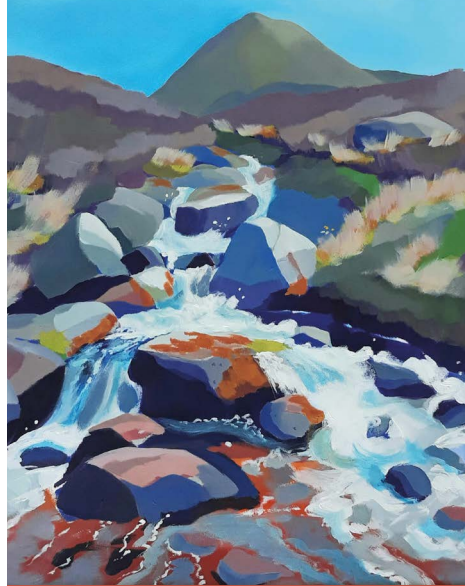
prints . ceramics . textiles . paintings
metalwork . woodwork . glass . clocks
cards . kits . jewellery . lights . throws

1 St. Catherine St., Cupar, Fife, KY15 4LS
2 High St., Dundee, DD1 1SX
www.maisieandmac.com



JANUARY MORAG STEVENSON

DECEMBER RONA KANT



Larks Gallery

10-5 MON, THURS, FRI, SAT
11-5 SUN

10 Braemar Rd, Ballater
013397 55888

www.larksgallery.com



Fran Marquis

Ceramics and tutoring
New website
www.franmarquis.com

Wildlife Art & Sculpture

Robert Greenhalf
Anthony Theakston
Matt Underwood

SOC
Waterston House
Aberlady
Thurs-Sun 10-4
22 Nov - 10 Jan
www.the-soc.org.uk

White Fox Gallery

Cottages up The Yarrow Helen Tabor

WINTER MIXED EXHIBITION
21 Nov – 22 Dec

Vessel Karen Thompson

51 High Street, Coldstream TD12 4DL. 01890 254 010 or 07980 402 755
www.whitefoxgallery.co.uk info@whitefoxgallery.co.uk
Tues-Sat 10am-5pm. Wed by appointment.



Influenced by the nature around him in rural Galloway, sculptor **Geoff Forrest** works in welding steel and weaving willow to create animals, baskets and organic forms. His 'pebble' basket (pictured) is painted with gesso and sprayed with several coats of acrylic colour before a sealant completes the process. www.geoffforrest.co.uk



Silversmith **Megan Falconer** makes hand-crafted tools, vessels and jewellery using cast rocks from the Scottish landscape, interpreting natural surface decay and erosion onto the soft metal, the texture of which alters through the process to create unique and unexpected finishes. www.meganfalconer.com

Hand-made

for you & your home



Duncan and Jacqui Grant of **Lava Jewellery** in Aberdeenshire use gold, platinum and diamonds to make a series of collections inspired mainly by the Scottish landscape. This pendant (pictured) is from their recent Rockpool collection based on the coastal rock formations near Stonehaven. They also have a selection of Burns-themed pieces. www.lavajewellery.co.uk



Ceramicist Clare Dawdry of **We Make Pots** makes bowls, mugs, vases and jugs which combine form and functionality. Decoration is quietly evocative of the landscapes and seascapes of Dumfries and Galloway. They sport a variety of matt and shiny surfaces and subtle colour changes achieved through layering glazes and often multiple firings. www.wemakepots.com



Hungarian-born textile artist **Edina Széles**, now based in the Shetland Islands, works with constructed textiles and traditional techniques to create hand-woven artworks such as her Black series of wall-hangings using natural black Shetland and Icelandic wool (pictured) and her Abandoned Croftthoose felted works inspired by old ruins. www.edinaszeles.com

ART & CRAFT COLLECTIVE



FROM ART... TO CRAFT

Original acrylic to oils, glass to gemstones and much more



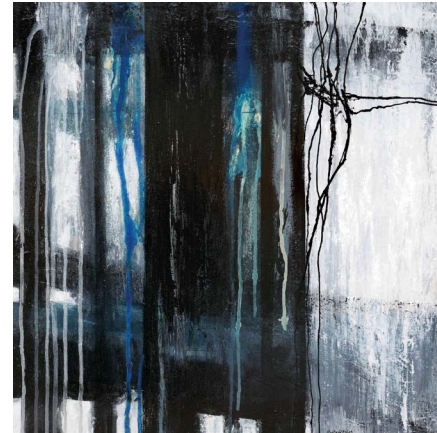
93 CAUSEWAYSIDE
EDINBURGH EH9 1QG
0131 629 9123
07801 581674
www.artcraftcollective.co.uk
OPEN TUESDAY - SUNDAY

Marta Utsler

ABSTRACT PAINTER



Dual Narratives Part 1



Dual Narratives Part 2

www.martautsler.com
martautsler@gmail.com 07758 335417

MOY MACKAY GALLERY
MID WINTER EXHIBITION

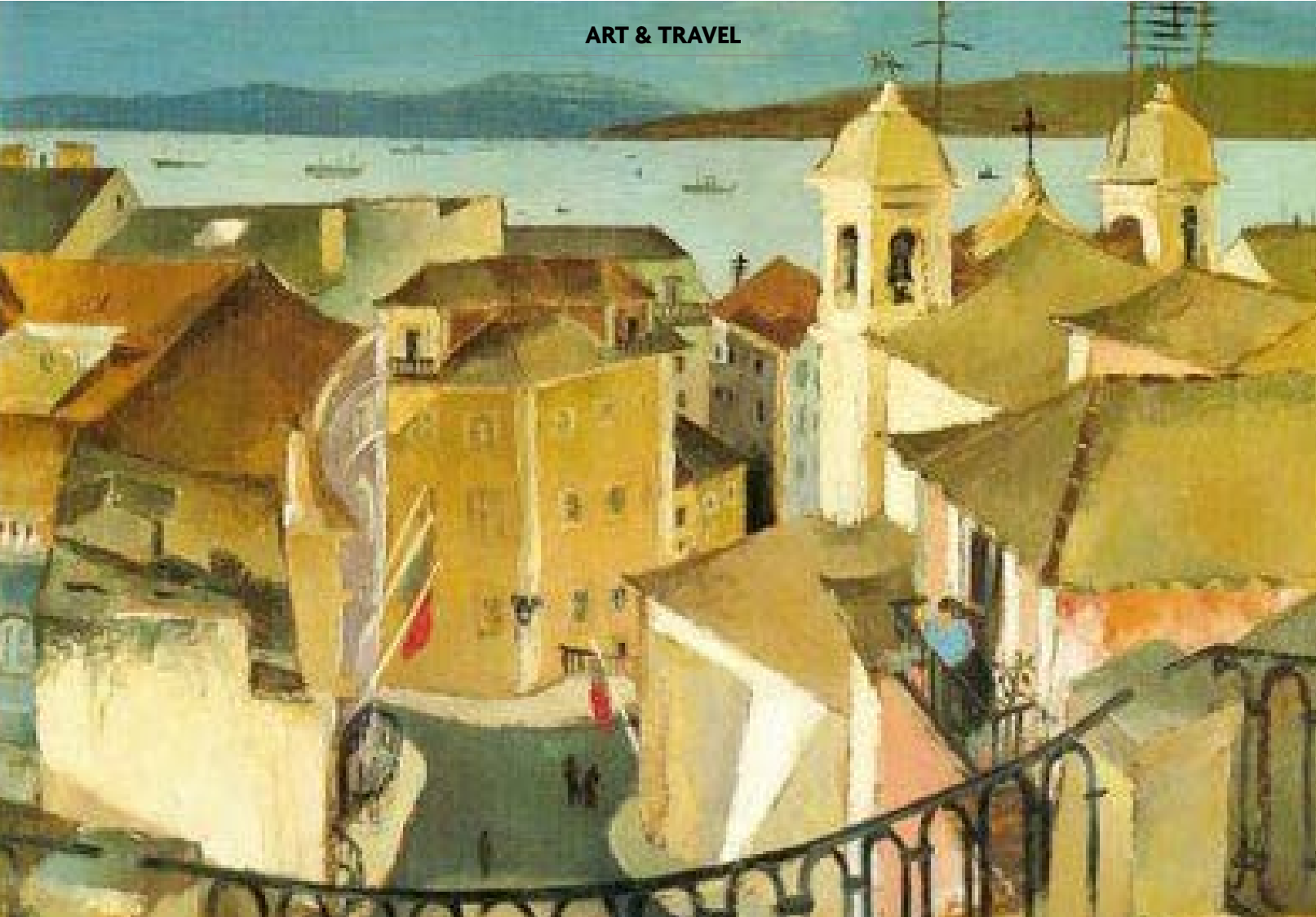
17 NORTHGATE, PEEBLES
T. 01721 722116
WWW.MOYMACKAYGALLERY.COM



Paper artist **Anna Cook** makes remarkably intricate scenes which capture the personality of birds and animals and depict them in their natural habitat. The pieces are created by cutting

into single layers of tonal paper before moulding and sculpting the design and mounting them onto deep box frames.

www.annacookpaperart.co.uk



Carlos Botelho (1889-1992), *Lisbon and the Tagus, Sunday, 1935*, oil on wood (Museu Nacional de Arte Contemporanea)

Lisbon is one of Europe's best value destinations for art-lovers.

Affordable Art

At the World Travel Market, the largest annual meeting of travel industry professionals, Lisbon has been named several times as the best value city in the Eurozone for meals, drinks, sightseeing, travel and accommodation.

The Portuguese capital is known for its year-round pleasant climate (including the warmest winters of any European metropolis), rich culture, grand architecture (often with a maritime theme, reflecting the city's historical relationship with the sea) and beaches located just 20 minutes from the

city centre.

Lisbon is the oldest city in Western Europe and the second oldest capital on the continent after Athens. Europe's only coastal capital, its historic port sits at the mouth of the river Tagus from which the city spreads out over a series of hills. While a massive earthquake in 1755 devastated three quarters of the city, it still has plenty of old world charm.

Lisbon also boasts world class museums showing virtually the entire spectrum of artistic output from antiquity to the present day. Many of the public and private collections are housed in former palaces and convents which would be worth a visit even without their museum displays.

In its sleek complex overlooking the beautifully landscaped Parque Santa Gertrudes, the **Museu Calouste Gulbenkian** is named after the Turkish-born oil magnate and one of the 20th century's wealthiest men, who over four decades amassed one of the world's finest private collections. The



Centro de Arte Moderna

6,000 pieces (he called them his "children") date from antiquity to the early 20th century and include examples from Egypt, Greece, Babylonia, Persia, the Islamic Orient, Europe, China and Japan.

Gulbenkian's dream of a museum to house his collection took over 30 years to realise. As early as 1937 he started discussions about a "Gulbenkian Institute" at the National Gallery in London. After a diplomatic spat with the British Government during WWII (he had followed the French Government to Vichy as a member of the Persian diplomatic delegation and was named an "enemy under the act", a status which was later revoked), he then considered the National Gallery of Art in Washington.

Gulbenkian eventually settled in Lisbon, where he remained until his death. The entire collection was brought to Portugal and in 1969 his wish to see it housed under one roof was fulfilled with the opening of the specially built museum.

The permanent exhibition galleries are laid out in chronological and geographical order to create two circuits. The first showcases classical and Oriental art (the latter Gulbenkian's special interest), including ceramics, coins, vessels, tapestries, furniture, illustrated manuscripts and sculpture, while the second covers European art in a stupendous display of paintings by giants such as Rembrandt, Rubens, van Dyck, Renoir, Gainsborough, Turner, Rousseau, Monet, Sargent, Degas, Corot and Manet.

French art and decorative arts are particularly prominent, reflecting Gulbenkian's lengthy residence in Paris and

including Regency furniture and Beauvais, Aubusson and Gobelins tapestries. Both sections end in a room devoted to Art Nouveau, including a collection of jewellery and glass by René Lalique.

www.museu.gulbenkian.pt

On the other side of the park – you'll pass a Henry Moore sculpture in the garden on the way over – is the **Centro de Arte Moderna (CAM)**, also run by the Gulbenkian Foundation. You can buy a joint ticket to visit both. CAM's permanent exhibition includes drawing, painting, sculpture and installation, with a special focus on Portuguese art produced in the first decades of the 20th century.

The display changes annually to showcase a selection of works from the museum's collection of around 9,000 pieces. This is complemented by an annual temporary exhibition of works by Portuguese and international artists.

A highlight is the largest existing collection of work by Amadeo de Souza-Cardoso, who produced an extraordinary body of work of various genres at breakneck



Museu Nacional de Arte Antiga

speed until his early death of pneumonia aged 30, when his career was at its height. There are also works by British artists such as David Hockney and Anthony Gormley.

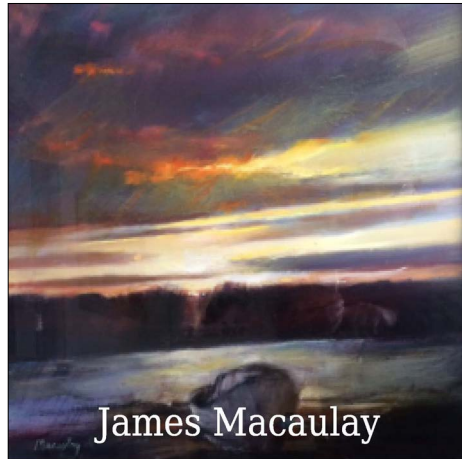
www.cam.gulbenkian.pt

Jump on the No.15 tram to the Belem district in the western part of the city, where across the street from the massive Jeronimos Monastery (a UNESCO World Heritage Site) and next to the Praca do Imperio (Empire Square) with its impressive fountain, you'll find the Belem Cultural Centre, Portugal's largest cultural building.

A modern take on a medieval 'castillo' made of huge sandstone blocks, this sprawling complex is home to the **Berardo Museum** and one of the world's most acclaimed collections of modern and contemporary art rivalling anything in New York, London or Paris. ▶▶▶

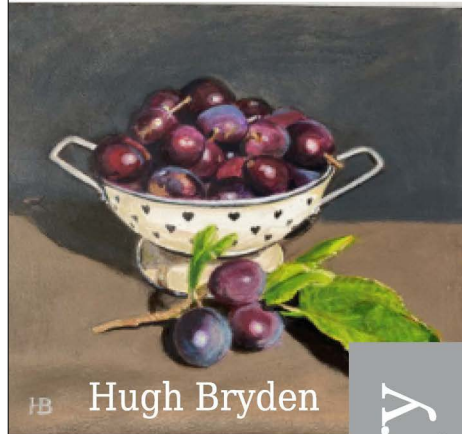


Museu Calouste Gulbenkian



James Macaulay

Old Friends EXHIBITION



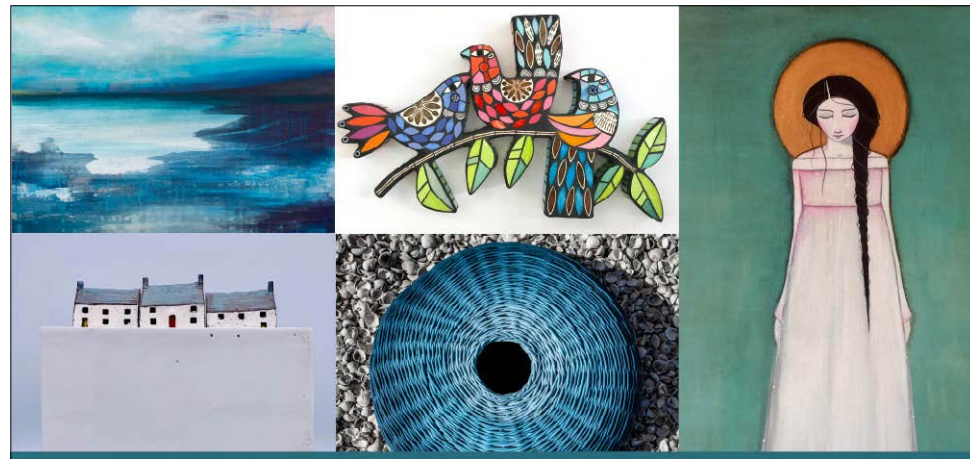
HB Hugh Bryden

View by appointment
ottersburngallery.com



Tom Lindsay

Ottersburn Gallery
Contemporary fine art and picture framing gallery



WINTER EXHIBITION

ONLINE FROM 5TH NOVEMBER, EXHIBITION OPENS 7TH NOVEMBER
WWW.WHITEHOUSEGALLERY.CO.UK



HIGH ST. GALLERY ART & ANTIQUES



Rare Losol Ware Art Deco Bowl



'Low Tide Harbour' by Davy Brown

Open by appointment. Tel: 07807 235 196
84 High Street Kirkcudbright DG6 4JL
contact@highstgallery.co.uk www.highstgallery.co.uk



The achievement of Madeira-born businessman Jose Manuel Rodrigues Berardo, the eye-popping collection comprises over 900 works representing dozens of artistic movements. A list of the artists reads like a Who's Who of modern art, including Warhol, Picasso, Dali, Duchamp, Magritte, Modigliani, Miro, Bacon, Pollock, Koons and many more – over 170 in all. Strolling through the Berardo is like taking a walk through the history of 20th century art.

en.museuberardo.pt (Tip: After your visit, cross the street to Pastéis de Belem, named after the custard-filled pastries served warm and oven fresh in this legendary Lisbon cafe dating from 1837 and decorated with its original wall tiling.)

A stone's throw from the magnificent triumphal arch leading to the Praça do Comercio (Commerce Square) and the waterfront, the **Museu do Design e da Moda**, or MUDE (which also means 'change' in Portuguese) is one of the world's leading museums of 20th century design and fashion.

Located in a former bank building stripped down to bare walls, concrete floor and supporting pillars so as to better focus attention on the collection of over 2,500 objects, the museum traces the history of design from the 1930s to the present in furniture, electrical appliances, glassware and other household objects, many of which are now so everyday that their revolutionary design and function are hardly considered. (Think Post-Its.) In all, there are works by some 230 designers responsible for starting worldwide trends, including icons such

as Philippe Starck, Charles Eames, Gerrit Rietveld and Arne Jacobsen.

The museum also holds Portuguese businessman Francisco Capelo's fashion collection of some 1,200 couture pieces by famous names such as Jean Paul Gaultier, Vivienne Westwood,

Yves Saint Laurent and Christian Dior.

Do not miss the beautiful mosaic from 1962 between the ground floor and the lower level left over from the Banco Nacional Ultramarino days. www.mude.pt

For an excellent overview of Portuguese art from 1850 to 1975, head for the **Museu Nacional de Arte Contemporanea** (MNAC), which houses the country's most important collection of state-owned modern and contemporary art. The permanent exhibition includes works by Portugal's greatest artists, such as Veloso Salgado, Silva Porto (dubbed "the divine master"), Carlos Reis, Sousa Lopes, Jose Malhao, Aurelia de Sousa and Antonio Carneiro.

The building stands on the site of a former monastery which was later used as a biscuit factory, and the temporary exhibition space, the Sala dos Fornos (Oven Room), is named after the brick ovens which still line the corridor outside it. The vaulted brick ceiling in the reception area recalls both its monastic and industrial past, while the rest of the modern refurb relies heavily on stone, metal and wood.

Limited exhibition space restricts the display to around a hundred works at a time from a collection of over 5,000 pieces. These are arranged by chronology and artistic movement, starting in the late 1870s, when the first Portuguese painters supported by the state to study in France returned home, bringing with them the new trend of capturing the light and climatic features of landscapes in open air painting. The visitor is then taken on a crash course through the last century of Portuguese art. There is also

a sculpture garden featuring 19th and 20th century bronze works.

www.museuartecontemporanea.pt

Housed in a 17th century palace with an extension in the former convent of Santo Alberto, the **Museu Nacional de Arte Antiga** (MNAA, or National Gallery of Ancient Art) houses a vast collection of European art and artefacts from the Middle Ages to the 19th century, including painting, sculpture, metalwork, ceramics, textiles, furniture, drawings and other decorative arts.

The many highlights include: an astonishing solid silver table centrepiece belonging to King Jose I (1750-77); a monstrosity reportedly created out of gold brought back to Portugal from East Africa by the famous admiral and explorer Vasco da Gama; and, perhaps most famously, the 15th century Saint Vincent Panels attributed to Nuno Gonçalves. Featuring 60 people from all levels of late medieval Portuguese






Berardo Museum

society venerating Saint Vincent, the patron saint of Lisbon, it is one of the first collective portraits in European art.

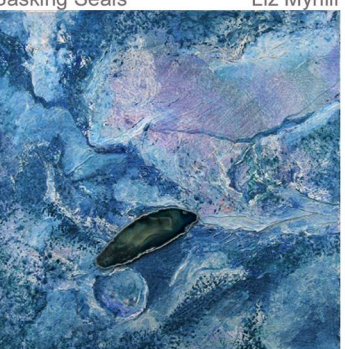
Also known as the Museu das Janelas Verdes, or Green Windows Museum (and located in Green Windows Street), the MNAA also has a selection of European paintings by, among others, Hieronymus Bosch, Pieter Bruegel the Younger, Albrecht Dürer, Lucas Cranach, Piero della Francesca, Holbein, Raphael, Tintoretto, van Dyck and Velazquez. www.museudearteantiga.pt (Tip: After your visit relax in Le Chat, a glass-walled cafe-bar next door with sweeping views over the 25th of April Bridge – a dead ringer for San Francisco's Golden Gate Bridge – and the comings and goings on the river.)

FURTHER INFO: www.visitlisboa.com


dandelion designs
Stein Isle of Skye 01470592218 dandelion-designs.co.uk

Basking Seals Liz Myhill




Tidal Pool Cathy Myhill




aberfeldygallery

MIXED EXHIBITION
19 Nov - 20 Dec



Margaret Evans (cropped image)



Paul Bartlett

Contemporary art by established and emerging Scottish artists. Large variety of landscape and wildlife art - ranging from representational to impressionistic - and a good selection of Perthshire scenes.

FREE UK DELIVERY
aberfeldygallery.co.uk

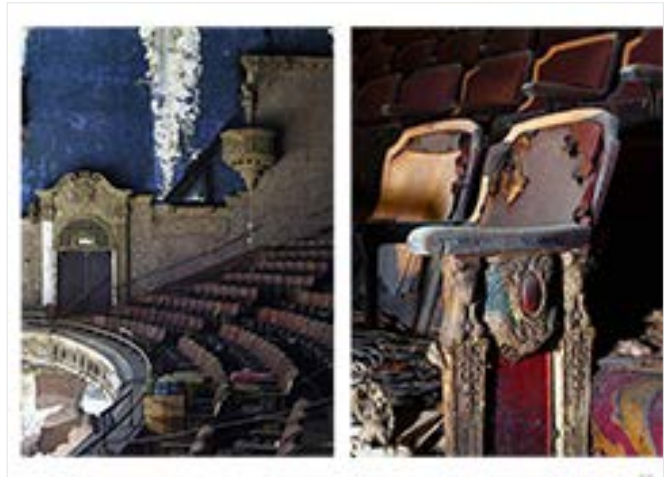
9 Kenmore Street, Aberfeldy, PH15 2BL
01887 829129
hello@aberfeldygallery.co.uk



After the Final Curtain: America's Abandoned Theaters, by Matt Lambros, pub. Jonglez Publishing In the early 20th century the streets of towns and cities across America were lined with movie theatres. The most opulent, known as "movie palaces",

were designed to make their patrons feel like royalty and people would dress up for a night out. But the advent of TV changed viewing habits and it became harder to fill 2,000-plus seats, forcing many theatres to close. Architectural photographer Matt

Lambros has captured the faded beauty of buildings once alive with music, laughter and drama which now stand silent and still, slowly surrendering to neglect and decay.



ArtLook

SOFTWARE & WEBSITES FOR ARTISTS & GALLERIES

Prices from **£5 PER MONTH**



Easy to set up, easy to manage and with full support along the way from the UK's specialist supplier of software and websites for the visual arts.

- Fully mobile friendly websites
- Multiple layouts and style options
- E-commerce ready
- State of the art cataloguing and sales tools included
- No additional hosting charges
- Optional 'Express' service available – your site set up for you and ready to manage

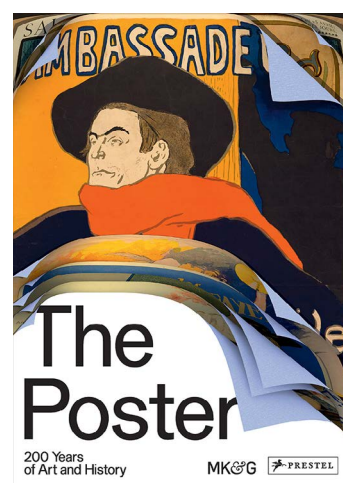
Try the system and create your own website **completely free** for 30 days with no obligation.

We're proud to be the choice of artists and galleries throughout Scotland

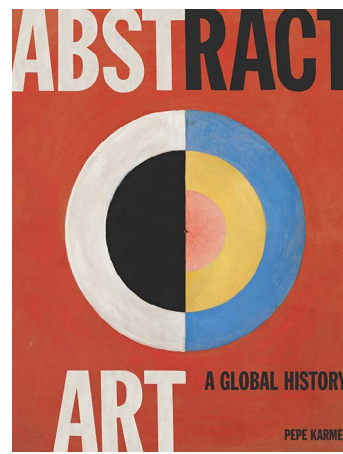
Learn more on our website at www.artlooksoftware.com
hello@artlooksoftware.com
or call on 0117 920 0025

I have been loving doing the website – it's fabulously straightforward once you get started. Thanks for your initial help, we're delighted with how the final site looks.

GORDON WILSON
www.gordonwilsonart.co.uk



The Poster – 200 Years of Art and History, ed. Jürgen Döring, pub. Prestel This stunningly illustrated book examines poster design and its relation to the arts and broader culture. Featuring 480 illustrations by over 200 artists, this expansive overview explores the use of posters as a versatile advertising tool from the early 19th century onwards, often incorporating the style of leading art movements with contributions from artists such as Alphonse Mucha, Egon Schiele, Pablo Picasso and Andy Warhol. A great dip in/dip out reference book of an art genre which pervades our everyday lives.

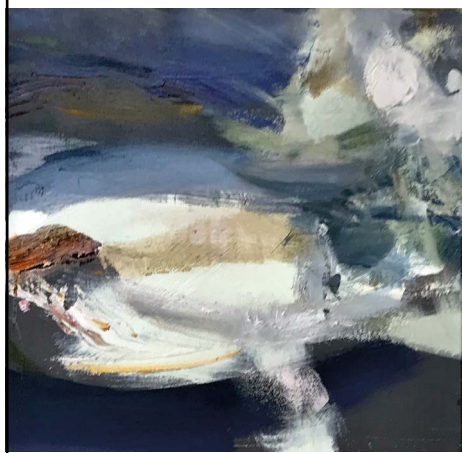


Abstract Art – A Global History, by Pepe Karmel, pub. Thames & Hudson Beginning with his exploration of the origins and evolution of the genre with the assertion that 'Abstract art is always rooted in experience of the real world', art historian Pepe Karmel takes us beyond the traditional histories of abstraction as a sequence of 'isms' with less interest in how it relates to the real world and also beyond the core group of European and North American artists who usually dominate the topic. Instead, Karmel shows how artists around the world have used abstract imagery to convey personal, social and political experience.



THE
QUAY
GALLERY

Open daily until Christmas
11am - 5pm



33 High Street, Aberdour, Fife
01383 860602
www.thequaygallery.co.uk

CONTEMPORARY, AFFORDABLE

and now
VIRTUAL

Launches
**30th Oct -
30 Dec 2020**

In association with



**ABERDEEN
ART
FAIR**
.co.uk

Prices
from
£50-£30,000

Organised by



Winter 2020
Mixed exhibition with
featured artist:
Hilke MacIntyre



www.galleryq.co.uk

Queen's Hotel Buildings, 160 Nethergate, Dundee DD1 4DU



01382 220600

Missing Masterpieces

In a new project by the Samsung electronics company, art-lovers and amateur detectives are invited to share any tips, theories or clues they can find in online media reports, blogs or social media using the hashtag #MissingMasterpieces. Further info: www.samsung.com/uk/explore/entertainment/missing-masterpieces-and-lost-art-on-the-frame

Vincent van Gogh

The Parsonage Garden at Nuenen in Spring (1884)

This view of the back garden of his father's parsonage is one of Van Gogh's earliest works. The church in the distance has now been demolished, while the parsonage and garden still survive in Nuenen near Eindhoven. The painting was stolen in a smash and grab from the Singer Laren Museum in the Netherlands on March 30, 2020 – Van Gogh's birthday.



Vincent van Gogh

Portrait of Dr Gachet (1884)

Dr Gachet worked in the sanatorium into which Van Gogh admitted himself after a mental breakdown when he mutilated his ear. Doctor and artist shared a close resemblance. In 1990 the Japanese businessman Ryohei Saito bought the painting for \$82.5 million, later wishing to be cremated with it when he died. It is now believed to be in a private Swiss collection.



GALLERY 2

Jason Michael Bentley

American painter living in Scotland
Painting, drawing & fine art portraiture

Offering a complete range of mouldings, original art, limited editions and unique gifts. Plus contract picture framing for hotels, pubs and restaurants.

9-5 Mon-Fri, 9-3 Sat

72 John Finnie Street, Kilmarnock
01563 550 303 | Gallery2Kilmarnock
www.gallery2kilmarnock.co.uk

Moon Study IV

EDINBURGH ART SHOP

SHOP ONLINE
FOR CLICK & COLLECT
OR MAIL ORDER

SHOP INSTORE
GIFT VOUCHERS
STUDENT, YOUNG SCOTT & ART
GROUP/CLASS DISCOUNTS

REGULAR UPDATES ON INSTAGRAM, FACEBOOK & OUR WEBSITE
www.EdinburghArtShop.co.uk

FLAT CAT GALLERY

and cafe



WINTER EXHIBITION

A wonderful selection of work by Artists, Print-makers, Ceramicists, Jewellers and more

All work for sale online.
Gift shop and café/takeaway service.
Mon-Sat 9.30-5, Sun 10-5. Closed Tues-Wed
www.flatcatgallery.co.uk
2 Market Place, Lauder, Berwickshire TD2 6SR
01578 722 808

ART 'N' JOY

PICTURE FRAMERS AND GALLERY

ART PRINTS
FOOTBALL SHIRTS
MEMORABILIA
TAPESTRIES

You name it, we frame it!



TEL 01294 472 222

WWW.ARTNJOY.CO.UK

52 HAMILTON STREET, SALTCOATS KA21 5DS



LOST ART



Jean Baptiste Oudry

White Duck (1753)

Oudry was the court painter to Louis XV of France. This still life was stolen from the collection of the Marquess of Cholmondeley at Houghton Hall in Norfolk in 1992. Some investigators believe it was passed into the hands of a gypsy gang based in the region and a former police informer claimed that the painting was hidden in the attic of a remote, derelict house in the Northumberland moors.

Paul Cézanne

View of Auvers-sur-Oise (c.1879-80)

This study of a cluster of rural houses shows Cézanne's ability to bend perspective for dramatic effect. Burglars took advantage of New Year's Eve 1999 festivities to steal the painting in cat burglar style from the Ashmolean Museum in Oxford by climbing adjacent scaffolding, smashing a skylight, dropping a rope ladder down and shielding their path with a smoke bomb. They brought a portable fan to blow the smoke and obscure themselves from CCTV cameras. The alarms rang, but the smoke led security staff to think it was a fire, so they called the fire brigade rather than intervene, giving the thieves time to escape.



William Blake

Last Judgement (1808)

The multi-talented mystic of British art, Blake was a brilliant painter, publisher and poet. Inspired by Michelangelo's fresco in the Sistine Chapel, this lost painting shows the dead rising to be sent eternally to Heaven or Hell – one of the many "visions" Blake claimed to have which were manifested in his work. The figures would likely have been vibrantly coloured, but the exhibition for which it was planned was cancelled and the painting was lost with many other works.



Claude Monet

Charing Cross Bridge and Waterloo Bridge (1899-1904)

Fascinated with how light affects and alters his subjects, Monet painted dozens of versions of both of these, each with subtle differences, two of which were stolen in October 2012 from the Kunsthal in Rotterdam. The mother of one of the thieves convicted claimed that she burned *Waterloo Bridge* in her stove in Romania in an attempt to destroy evidence against her son. Police did find traces of pigment, but not enough to verify her claims.





David Teniers the Younger

Summer (c. 1644)

In this painting from a series of Allegories of the Four Seasons by the Dutch artist best known for painting bawdy tavern scenes, workers are harvesting wheat on a hot day. Teniers painted several versions of the series and one version of *Summer* was stolen from the Museu Nacional de Arte Antiga in Lisbon in 1974.

József Lampérth Neme

Landscape (1917)

This painting by the avant-garde Hungarian artist went missing from a storage warehouse belonging to the MODERN Center for Modern and Contemporary Art in Debrecen, Hungary. Archives and warehouses are popular targets with thieves, as it might be months before anyone notices something is missing. However, works in storage require specialised knowledge to locate, so a theft like this suggests an 'inside job'. ▶▶▶



Jacob Jordaens

A Mythological Scene with a Young Bacchus (1640)

This masterpiece by the Dutch Old Master was one of thousands looted from Poland during WWII. The painting shows the great influence of Rubens, a generation older than Jordaens and also from Antwerp. Bacchus, the Roman god of agriculture, wine and fertility, is shown as a young child surrounded by female nymphs and satyrs (half-man, half-goat creatures). Poland's rich cultural heritage collections were decimated by both the Nazis and the Russian Red Army. This work was taken from the J.K. Bartoszewicz Museum of History and Art in Lodz.

Barbora Kyslikova

Chloe & Emma (2013)

Soon after the Czech painter moved to Oslo, two of her most important artworks were stolen. She made a documentary, *The Painter and the Thief*, which premiered at the 2020 Sundance Film Festival and told the true story of how she traced and developed an unlikely friendship with a young man who stole her paintings. Since her oversized, photorealistic works had a limited audience beyond Norway until the film was seen, the theft was more likely an act of passion rather than an attempt at profit. (Most thieves know nothing about the art they take, only seeing it as a portable, high value commodity.) This case is also unusual in that the apprehended thieves claim not to remember anything or what they did with the paintings, since they were so "incapacitated" at the time.



gallery 27 PICTURE FRAMING & ART
Dunbar

A Glimpse of Light by Natasha Morton

GALLERY27 offers professional & creative picture framing and showcases an inspiring mix of Scottish artists and makers

Open Mon to Sat 10 - 4 (Sun by appointment)
8 Spott Rd DUNBAR East Lothian
www.visitgallery27.com
07942 676804
visitgallery27@gmail.com

@visitgallery27

amaranthine
the everlasting

Vibha Pankaj

Visit her website
www.vibhaartist.com

QUALITY, PRE-READ ART BOOKS

IN NEARLY NEW CONDITION

Artist bios, rare exhibition catalogues, illustrated histories of top art movements – and more!

COME IN AND BROWSE OUR EVER-CHANGING STOCK

Citadel Books, 41 Montrose Terrace, Edinburgh EH7 5DJ

PACK SEND

SPECIALIST SHIPPERS OF FINE ART & ANTIQUES

- Fragile, large or awkward – wherever in the world it needs to go
- Affordable, customised crates that deliver art works safely
- International & UK delivery services
- Cover against loss or damage

0131 201 2244

53 Elm Row, Leith Walk, Edinburgh EH7 4AH
www.packsend.co.uk/edinburgeast

Anything. Anywhere.