



27 November 2020

Issue 141

**14TH ANNUAL  
ART & CRAFT  
GIFT GUIDE**  
**Dozens of gift ideas  
for art-lovers!**

*Her Best Side* by Garry Harper  
is from the Winter Mixed  
Exhibition at The Velvet Easel  
Gallery in Portobello.

Garry Harper



4 November to 17 December 2020



Image: Isabelle Huppert in Jean-Paul Salomé's *La Bronne*

La fête du CINEMA 28 fff

FRENCH FILM FESTIVAL UK

In cinemas and online

Edinburgh Filmhouse,  
Aberdeen Belmont Filmhouse,  
Glasgow Film Theatre and  
other leading independent  
cinemas across Scotland

[www.frenchfilmfestival.org.uk](http://www.frenchfilmfestival.org.uk)



# THE BALLATER GALLERY

## WINTER SHOW

COMMENCES 28TH NOVEMBER 2020

DAVID REID & HIS TEAM INVITE YOU TO VIEW THE NEW COLLECTION  
ARTWORK FROM OVER 50 LEADING SCOTTISH ARTISTS



[WWW.BALLATERGALLERY.CO.UK](http://WWW.BALLATERGALLERY.CO.UK)

46 BRIDGE STREET, BALLATER, AB35 5QD.

TEL: 01339 755444 EMAIL: [INFO@BALLATERGALLERY.CO.UK](mailto:INFO@BALLATERGALLERY.CO.UK)



**LEITH**  
SCHOOL  
OF ART

## A LEADING SCOTTISH ART SCHOOL IN EDINBURGH

Our high-quality teaching makes Leith School of Art an exceptional place to learn whether you are an established artist or a complete beginner.

NEW SHORT COURSES FOR JANUARY 2021:

- Online lectures: Meeting the Gaze (6 weeks)  
Art & Spirituality (11 weeks)
- Digital Photography (Friday afternoons)

YEAR-LONG COURSES | SHORT COURSES | SUMMER SCHOOL

Leith School of Art, 25 North Junction Street, Edinburgh, EH6 6HW  
www.LeithSchoolofArt.co.uk | 0131 554 5761 | Enquiries@LeithSchoolofArt.co.uk

# COAST GALLERY

## Winter Exhibition 'Winter Song'

24 Oct - 12 Feb

Featuring artists Jackie Henderson, Stanley Bird, Ian Mcwhinnie, Nicola Ross, Claire Beattie, Basia Roszak, John McClenaghan and Aliisa Hyslop



Bespoke picture framing - ask about our home consultation service

11-4 Mon - Sat. Closed Sun.  
144 High Street, Dunbar, East Lothian  
01368 865 141 [www.coastart.co.uk](http://www.coastart.co.uk)



# SOLO GALLERY



New work by  
**JONATHAN STOCKLEY**  
Charcoal artist

Sat 5 Dec to Christmas  
1 Year Anniversary Exhibition

51 High Street, Innerleithen EH44 6HD  
07495 710687

[www.sologallery.co.uk](http://www.sologallery.co.uk)  
Instagram: @sologallery  
Facebook: @sologallery51

resipole  
studios  
FINE ART GALLERY



small works  
[www.resipolestudios.co.uk](http://www.resipolestudios.co.uk)  
loch sunart | acharacle | argyll | ph36 4hx

## A time and a place

*A new collection of paintings and limited edition prints*

*Alexander Millar transports his 'Youth and Young Manhood' characters to iconic city locations that have been very important in his life – from the High Level Bridge in Newcastle to the Trocadero Gardens in Paris.*



[www.alexandermillar.com](http://www.alexandermillar.com)

Princes Square  
Buchanan Street  
Glasgow  
0141 221 7565



55-59 Grey Street  
Newcastle  
upon Tyne  
0191 230 4440

## ARTS NEWS

Artists have been active in printing and book production for centuries. Artist books have appeared in a wide range of forms, from the traditional codex to scrolls, fold-outs, concertina and loose leaf, and were adopted by movements such as Dada, Constructivism and Fluxus.

Like everyone during lockdown artists have all been forced to reconsider how to best stay connected with people and

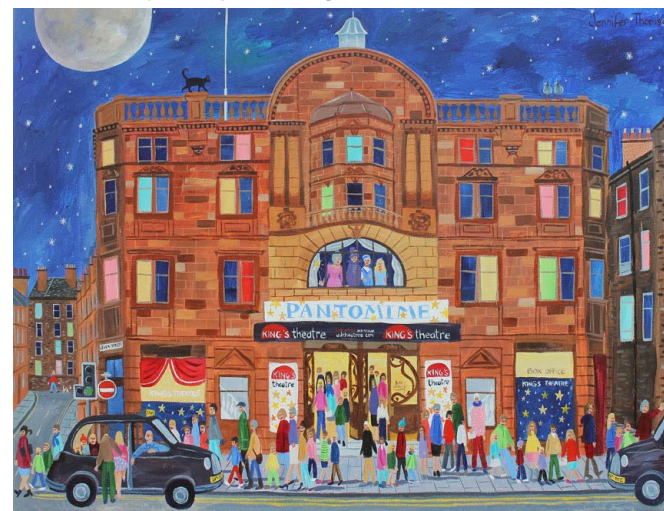
life in general and many had to rethink how to physically make their work, what their artworks meant and how they could connect with their audience in unprecedented times. **Re:connections** at Edinburgh's **Upright Gallery** (until Dec 19) features a selection of artist books by over 30 makers on the theme of connections.

Contributions include: Fenneke Wolters-Sinke's *Readings from a River*, a three-volume set in a clamshell box covered with

bookcloth (pictured); Winifred Hodge's *Our amazing coastline*, a concertina sketchbook in watercolour, pen and ink backed with a navigation chart and inspired by the East Lothian coast; and Serena Smith's *Dendokron*, a series of hand-coloured images and poems made in collaboration with writer Lindsey Shaw-Miller and presented in a paper slip case. The exhibition was co-curated with Edinburgh-based artist Susie Wilson. [www.uprightgallery.com](http://www.uprightgallery.com)



Artist Jennifer Thomson's image of Edinburgh's King's Theatre, *What A Pantomime!* (pictured), was recently used to illustrate a limited edition poem by Alexander McCall Smith, copies of which were sold as part of the theatre's Crowdfunder Appeal. These have now sold out, but you can still help by ordering Christmas cards featuring the same painting. [www.capitaltheatres.com](http://www.capitaltheatres.com)



Curated by Dancing Light Gallery, **Echoes of Existence** at Edinburgh's **Dundas Street Gallery** (Dec 4-10) features the latest collection by landscape artist Helen Acklam, mainly depicting cottages, bothies and shielings in the Outer Hebrides.

Once home to earlier generations of islanders and now standing derelict and isolated, their faded beauty is given new life with Acklam's use of mixed media, for example adding sand from Luskentyre beach to acrylic paint, ink, gouache and graphite to create a sense of belonging and add a touch



of authenticity. Old local spiritual books are also introduced in the form of collage to represent the faith and beliefs observed in the island communities. Pictured: *Cottages at Breaslete*  
[www.dancinglightgallery.co.uk](http://www.dancinglightgallery.co.uk)





**Brown & Turner**  
www.browndturner.co.uk

## Christmas Jewellery Auction

12 December | 10am | Live Online

01835 863445 | info@browndturner.co.uk  
Viewing 8 – 11 December

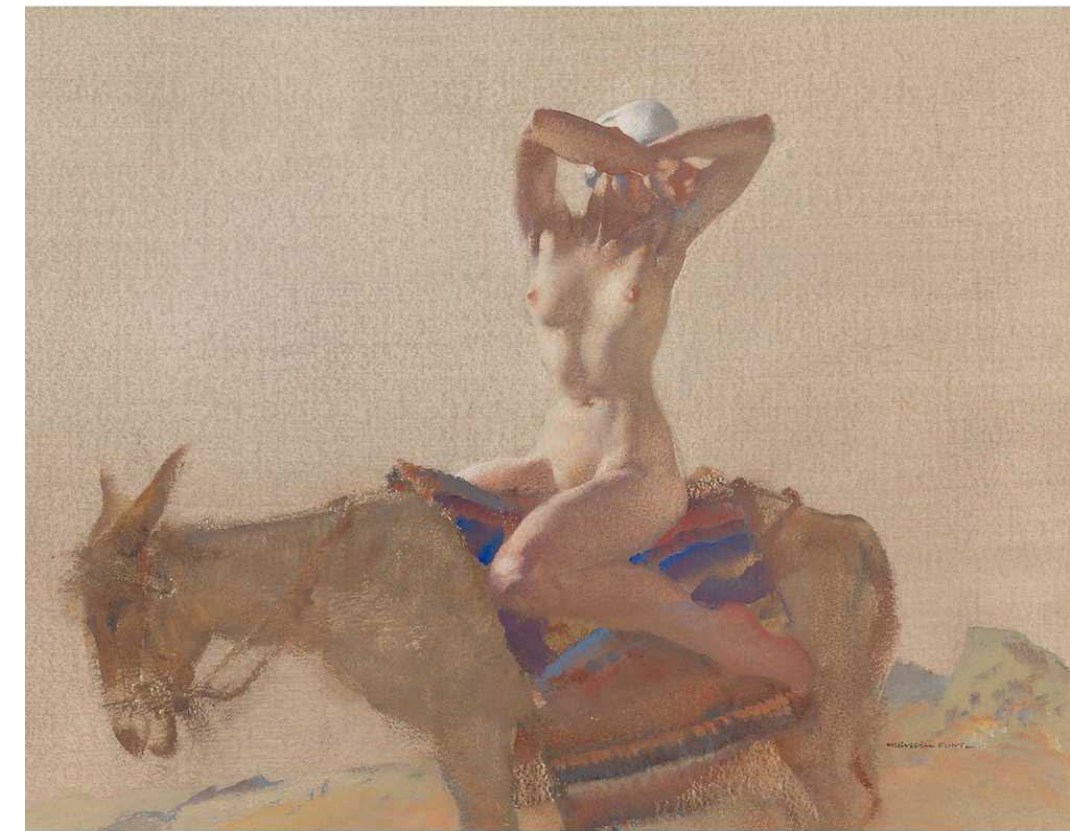
CATALOGUE ONLINE 4 DECEMBER  
www.browndturner.co.uk

The next live online auction at the Edinburgh branch of **Lyon & Turnbull** is **Scottish Paintings & Sculpture** (Dec 4), a highlight of which is Sir William Russell Flint: A Private Collection, including over 20 works by the Edinburgh-born artist.

Sir William Russell Flint (1880-1969) produced illustrations for several books, including H. Rider Haggard's *King Solomon's Mines*, W.S. Gilbert's *Savoy Operas*, Sir Thomas Malory's *Le Morte d'Arthur* and Geoffrey Chaucer's *The Canterbury Tales*. He was President of the Royal Society of Painters in Watercolours (now the Royal Watercolour Society) for 20 years. While he enjoyed considerable commercial success, Flint gained little respect from art critics. The collection includes delicate watercolour scenes from the Cote d'Azur and Venice. Pictured: *Liberation*, Lot 18, est. £6-8,000

The auction also includes works by artists who were active mainly between the mid-19th and mid-20th century, such as George Houston RSA, James Morris Henderson and E.A. Hornel.

www.lyonandturnbull.com



# Edinburgh Macmillan ART SHOW 2020 - ONLINE this year

Supporting  
**MACMILLAN  
CANCER SUPPORT**

## Art For A Great Cause

Don't miss the art show where you can make a real difference.

For the first year the art show is moving online to raise vital funds for Macmillan Cancer Support.

1st – 30th November

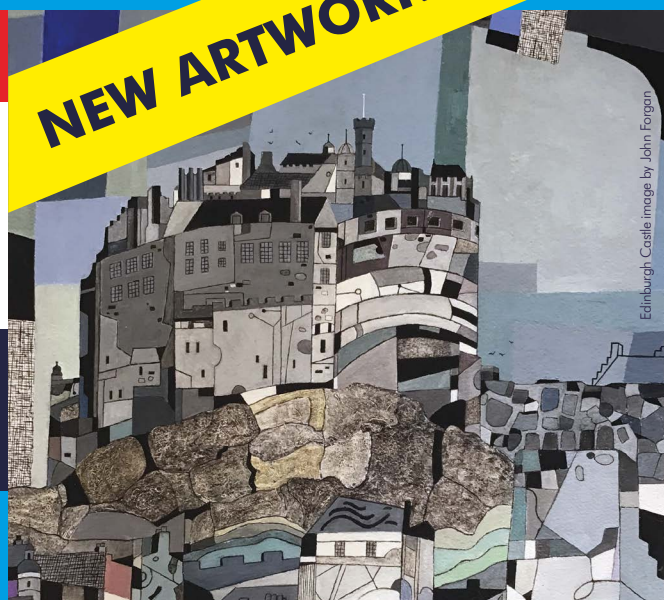
f Edinburgh Macmillan Art Show

@MacArtShow edinmacmillanartshow

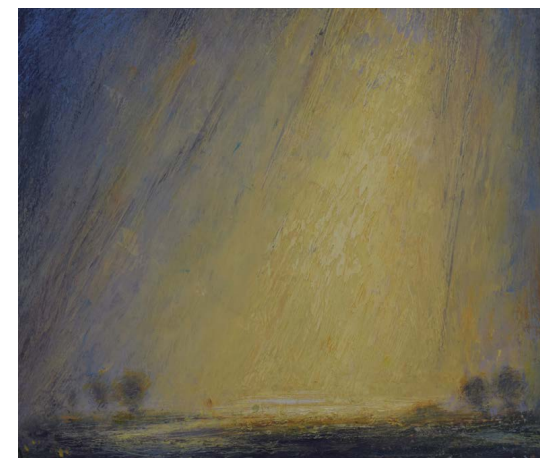
www.macmillanartshow.org.uk

Macmillan Cancer Support, registered charity 261017 and SCO39907

**NEW ARTWORK ADDED**



Edinburgh Castle image by John Forgan



Perhaps better known as a figurative painter focusing on single portraits influenced by the Old Masters, Robert MacMillan is showing a new body of landscapes in *Towards St Andrews* at **Fraser Gallery** in St Andrews focusing on his love of the town and the surrounding area. He says: "In the early days of lockdown, we spent time as a family outside, where I was captivated by the sky, the rapidly changing cloud forms and the ever-changing light." Pictured: *Where the trees whisper* www.frasergallery.co.uk

Featured artist in *Winter 2020* at **Gallery Q** in Dundee is Hilke MacIntyre (until Jan 23, 2021), with ceramic wall reliefs, paintings and prints - the first time all three disciplines have been shown together. Pictured: *Two Angels*, acrylic on canvas

The exhibition also features paintings by Jean Martin RSW, Derek Robertson RSW, Nichola Martin, Fiona Sturrock, Jennifer Irvine RGI RSW, Irene McCann, Heather Soutar, Kate Henderson and Claire Harkess RSW, glass by Kim Bramley, Gregg Anston-Race and Black Cat Glass Designs, ceramics by Wayne Galloway, Patricia Shone, Phil Arthur and Jaroslav Hrustalenko and luxury silk scarves

by Taisir Gibreel as well as prints, jewellery and hand-made Christmas decorations and cards. www.galleryq.co.uk





The **Winter Show 2020** at **Gerber Fine Art** in Glasgow (until Jan 31, 2021) is a mixed exhibition of 19th to 21st century paintings, drawings and sculptures encompassing both pieces which are brand new to the gallery and others that the gallery has had in store but is showing for the first time.

Many Scottish, British and European artists are represented, including Joan Eardley, J.D. Fergusson, Pat Douthwaite, William McCance, Margot Sandeman and members of the Scottish Colourists, the Glasgow Girls

and Glasgow Boys. There is also a selection by Scottish contemporary artists. Pictured: Cecil Hay (1899-1974), *Still Life with Bottles and Glass*, oil on canvas  
[www.gerberfineart.co.uk](http://www.gerberfineart.co.uk)



The **Christmas Show** at the **Royal Scottish Academy** in Edinburgh (Nov 29-Dec 22) is a festive celebration of recent works by 40 RSA members. Pictured: James Castle RSA, *Night* [www.royalscottishacademy.org](http://www.royalscottishacademy.org)



THE STREAM, LAGDUFF LODGE.

## “STRANGE PATH”

A SOLO SHOW BY  
NICHOL WHEATLEY

19TH NOVEMBER  
- 6TH DECEMBER  
GROUSE AND CLARET,  
KINROSSHIRE

[WWW.NICHOLWHEATLEY.COM](http://WWW.NICHOLWHEATLEY.COM)



CELEBRATING SCOTTISH ART SINCE 1862

ST ANDREWS  
fraser gallery

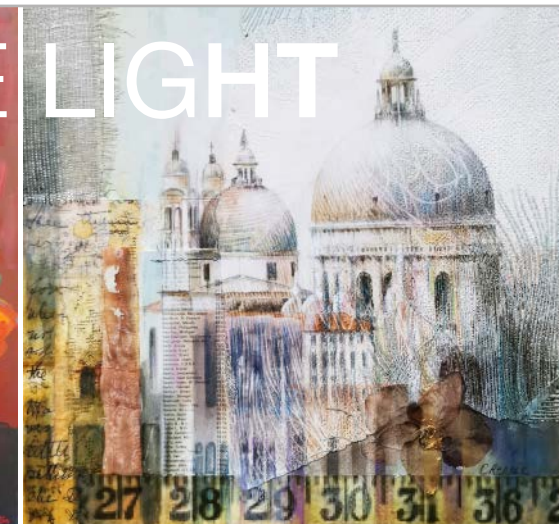
## Francis Boag

*Summer Dreaming*  
Mixed media on canvas 80cm x 120cm

53 South Street, St Andrews hello@frasergallery.co.uk



**Poppies** James Fullarton



**Santa Maria Della Salute** Clare Rennie

Our new Exhibition **INTO THE LIGHT** celebrates the creativity of a group of Ayrshire artists and makers who have produced this work over the last six months. It is an eclectic mix of subjects and styles, inspirational and uplifting. There is something for everyone to enjoy and plenty of ideas for Christmas presents!

We hope you will be able to visit us in person but for those who are unable to do this we have created a virtual exhibition, visit [www.themaclaurin.org.uk](http://www.themaclaurin.org.uk) Covid 19 restrictions are in place. Please telephone the gallery to make an appointment to gain access to the exhibitions.- 01292 445447

[www.themaclaurin.org.uk](http://www.themaclaurin.org.uk)



**The Maclaurin Art Gallery**  
Rozelle Estate,  
Monument Road,  
Ayr, KA7 4NQ

Monday to Saturday  
10am - 5pm  
Sunday 12 noon - 5pm

The Maclaurin Trust  
is a Scottish Charity No:- 12798

If you are unable to come into the gallery and wish to purchase an item please telephone  
**01292 445447**





## JAMES FULLARTON

nov 26th - dec 24th, 2020

## ROGER BILLCLIFFE GALLERY

134 blythswood street  
glasgow g2 4el  
0141 332 4027  
[www.billcliffegallery.com](http://www.billcliffegallery.com)

The **Winter Exhibition** at **Goldfinch Gallery** in Comrie, Perthshire (Nov 28-Jan 31, 2021) features recent additions to the collective Ann Wegmuller RSW RWS, whose abstract landscapes are known for their bold use of colour, and the Wild Wood Brothers, who use locally sourced trees to create original furniture and unique objects.

Also showing are core exhibitors such as painters Jonathan Sainsbury with delicate, keenly observed depictions of nature and wildlife and Lucy Campbell with dream-like landscapes as well as jeweller Claire Allain, who uses ethically sourced gemstones and recycled metals to produce pieces inspired by places where she has lived, including New Zealand, Cornwall and now Perthshire.

There is also a large range of limited edition prints and gifts available. Pictured: Jewellery by Claire Allain  
[www.goldfinchgallery.co.uk](http://www.goldfinchgallery.co.uk)



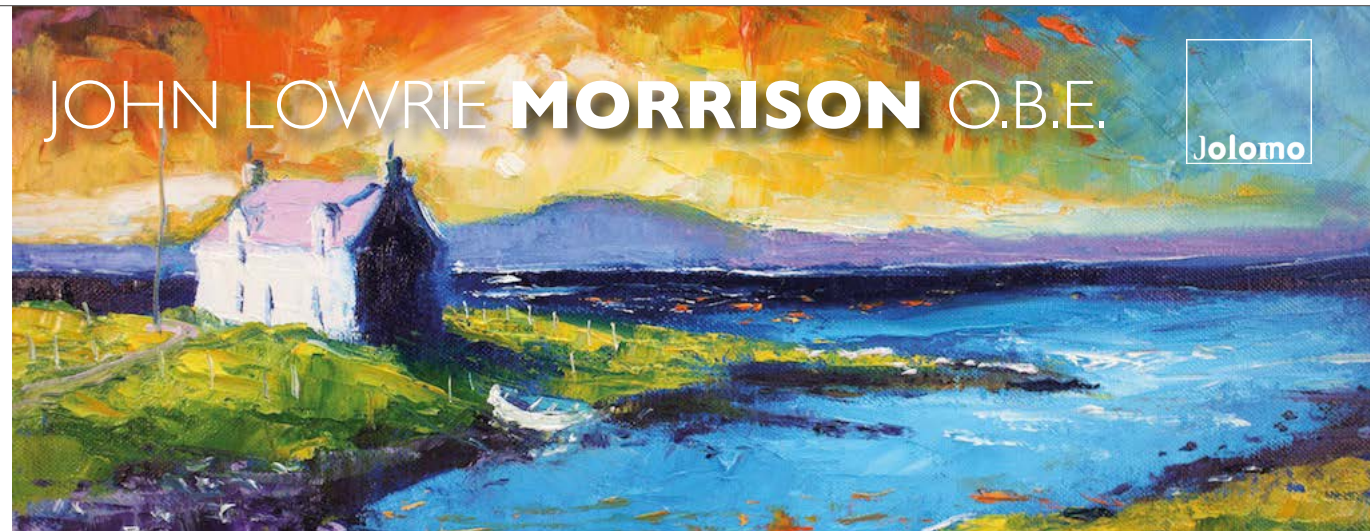
The **Christmas Mixed Exhibition** at **Artisanand** in Aberfeldy (Nov 28-Jan 8, 2021) features the Orkney Collection by Georgia Allan, whose work is inspired by the islands' birds. As a natural resting point for migration routes, the Orkneys have some of the richest bird life in the world, from the comical puffin to the majestic sea eagle. As well as all kinds of unusual species passing through, nesting birds are safe from land predators.

Made with the highest quality Hahnemühle German etching, Georgia's prints have a vibrancy and beauty in detail which is impossible to demonstrate digitally. All but one piece, *Peasants* (pictured, 1 of 3), are single editions. [www.artisanand.co.uk](http://www.artisanand.co.uk)



## JOHN LOWRIE MORRISON O.B.E.

Jolomo



## ON THE EDGE: THE SCOTTISH ISLES

7TH - 29TH NOVEMBER 2020



THE GLASGOW GALLERY

182 BATH STREET GLASGOW G2 4HG  
0141 333 1991 [info@glasgowgallery.co.uk](mailto:info@glasgowgallery.co.uk)  
[www.glasgowgallery.co.uk](http://www.glasgowgallery.co.uk)

## FORTHCOMING AUCTIONS

Paintings & Works on Paper | 21 OCT  
Select Jewellery & Watches | LONDON | 22 OCT  
Modern Made: Modern & Post-War Art,  
Design & Studio Ceramics | LONDON | 23 OCT  
Decorative Arts: Design since 1860 | 02-03 NOV  
Fine Asian & Islamic Works of Art | LONDON | 05 NOV  
Five Centuries: Furniture, Paintings  
& Works of Art | 18-19 NOV  
Jewellery, Watches & Silver | 02 DEC  
Whisky & Spirits | 02 DEC  
Scottish Paintings & Sculpture | 03 DEC

LYON & TURNBULL  
AUCTIONEERS SINCE 1826

EDINBURGH 0131 557 8844 | [www.lyonandturnbull.com](http://www.lyonandturnbull.com)





**BORDERS** The art of **Marta Utsler**, from larger-sized canvases to smaller works on paper, will surely be an effective way to create a focal point. [www.martautsler.com](http://www.martautsler.com)



**ISLE OF SKYE** **Dandelion Designs & Images Gallery** has a wide selection of limited edition linoprints, collagraphs and mixed media paintings as well as locally hand-made art and craft, photography, jewellery, cards and prints. [www.dandelion-designs.co.uk](http://www.dandelion-designs.co.uk)



**EAST LOTHIAN** **Coast Art** in Dunbar has cute and quirky ceramics by Ans Vink, hand-crafted in the Netherlands and perfect for any wall or mantelpiece. [www.coastart.co.uk](http://www.coastart.co.uk)

**EDINBURGH** **The Nomads Tent** can brighten up those chilly winter days with one of their gorgeous reversible kantha scarves from Jaipur, made from recycled silk saris. Choose from a lovely selection of colours and patterns. [www.nomadstent.co.uk](http://www.nomadstent.co.uk)



**DUMFRIES & GALLOWAY** Maureen Briggs of **High St. Gallery** in Kirkcudbright has produced a range of unique, hand-crafted découpage mirrors, incorporating digital and original artwork and 'trompe l'oeil' elements. [www.highstgallery.co.uk](http://www.highstgallery.co.uk)



**FIFE** Wayne Galloway's work can be seen at the St Andrews-based **Sproson Gallery**, which also incorporates a family-run, bespoke custom picture framing business. View their selection of artists and contact details at [www.sprosongallery.com](http://www.sprosongallery.com)



**AYRSHIRE** **Gallery 2** in Kilmarnock has some lovely work on show such as Lorna Reid's Jackanory in felt wool. Based in West Kilbride, Lorna worked for large knitwear companies and continues to design, make and teach. [www.gallery2kilmarnock.co.uk](http://www.gallery2kilmarnock.co.uk)



**EDINBURGH** On the southside of Edinburgh, **Art & Craft Collective** showcases the work of over 60 artists and crafters, with original art to pottery and more - always original and often unique. Open Tuesday - Sunday. [www.artcraftcollective.co.uk](http://www.artcraftcollective.co.uk)



**FIFE** **Tatha Gallery** in Newport-on-Tay can brighten up your life with a wonderful array of smaller scale works, ceramics and textiles - a great way to support local artists. [www.tathagallery.com](http://www.tathagallery.com)



**FIFE** **The Quay Gallery** in Aberdour offers a carefully curated selection of paintings, prints and objets d'art, all sourced from the UK. Open Easter until Christmas. [www.thequaygallery.co.uk](http://www.thequaygallery.co.uk)



**ABERDEEN** Let the team at **Gallery Heinzl** help you choose the perfect original gift for your partner, family or friends. They can also arrange delivery anywhere in the world. [www.galleryheinzl.com](http://www.galleryheinzl.com)



**ABERDEENSHIRE** **Milton Art Gallery** at Milton of Crathes, Banchory has work by a range of makers, including Sarah Koetsier's hand-thrown porcelain pieces, which look lovely together or on their own. [www.miltonart.com](http://www.miltonart.com)



**PERTSHIRE** **Aberfeldy Gallery** features contemporary art by established and emerging Scottish artists and craftmakers, landscapes, wildlife art and photography, pottery, glasswork and jewellery. Photo: Adam Seward. [www.aberfeldygallery.co.uk](http://www.aberfeldygallery.co.uk)



**PERTSHIRE** Based in the beautiful village of Comrie, **Goldfinch Gallery** features new and exciting works in every type of media, such as Hetty Williams' unique resin lamps with LED lighting. [www.goldfinchgallery.co.uk](http://www.goldfinchgallery.co.uk)



**EION STEWART**  
FINE ART



*Northern Lights*  
Mixed Winter Show  
5th Dec - 27th Feb

55 Allardice Street, Stonehaven, AB39 2AB  
01569 780606  
art@eionstewartfineart.com  
www.eionstewartfineart.com

Robert McAulay, White Roofs III

**GALLERY HEINZEL**  
CONTEMPORARY ART



**WINTER EXHIBITION**  
14th November to March 2021

Gift advice, wrapping & delivery service

24 Thistle Street, Aberdeen AB10 1XD 01224 625629 info@galleryheinzel.com  
Open Tues to Sat from 10am www.galleryheinzel.com

f t own art



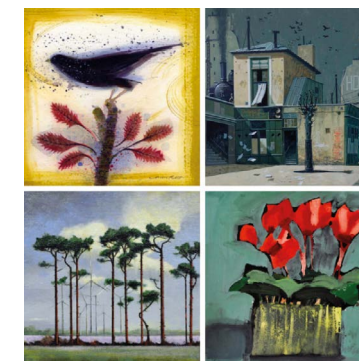
**ARGYLL** The Small Works show at **Resipole Studios** in Acharacle offers unique gift ideas for the art-lover in your life, including quality ceramics, painting, sculpture and more, for under £500. [www.resipolestudios.co.uk](http://www.resipolestudios.co.uk)



**EDINBURGH** The Winter Exhibition at the **Torrance Gallery** in Edinburgh features a cornucopia of original artwork by over 40 gallery artists, including this oil by Marion Drummond. They also have a wealth of jewellery, ceramics, bronze and glassware. [www.torrancegallery.co.uk](http://www.torrancegallery.co.uk)



**BORDERS Solo Gallery** in Innerleithen has a range of work by Scottish artists and makers. These beautiful, smoke-fired ceramic gannets are from a collection by Vivienne Sillar. [www.sologallery.co.uk](http://www.sologallery.co.uk)



**GLASGOW** The **Roger Billcliffe Gallery** has a collection of over a hundred small (20x20cm) paintings by some of Scotland's best artists. Displayed unframed, they make perfect gifts. [www.billcliffegallery.com](http://www.billcliffegallery.com)



**PERTHSHIRE** A series of eclectic exhibitions at **Artisanand** in Aberfeldy showcases a wide range of media and styles from the quirky to the traditional by over 50 local artists. These paper and willow sculptures are by Georgia Crook. [www.artisanand.co.uk](http://www.artisanand.co.uk)

**DOCK STREET STUDIOS**

9 Dock Street, Dundee, DD1 4BT.  
Open Monday to Saturday, 10-4pm



Unique Gifts, Artists, Makers,  
Exhibitions & Events

CONTEMPORARY, AFFORDABLE  
and now **VIRTUAL**

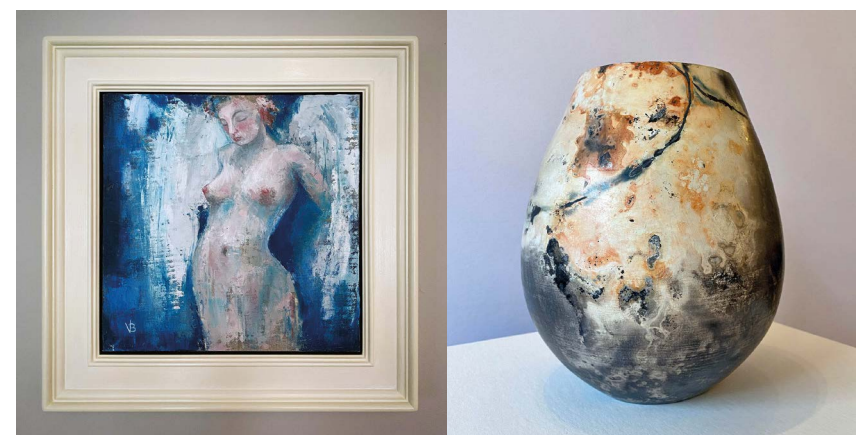
Launches **30th Oct - 30 Dec 2020**

In association with **T.A.Q.A.**

**ABERDEEN ART FAIR**  
.co.uk

Prices from £50-£30,000

Organised by **GMEvents**



**ABERDEENSHIRE Eion Stewart Fine Art** in Stonehaven is a contemporary art gallery and frame-maker, showing some of the best Scottish-based painters and makers in a year-round exhibition programme. [www.eionstewartfineart.com](http://www.eionstewartfineart.com)

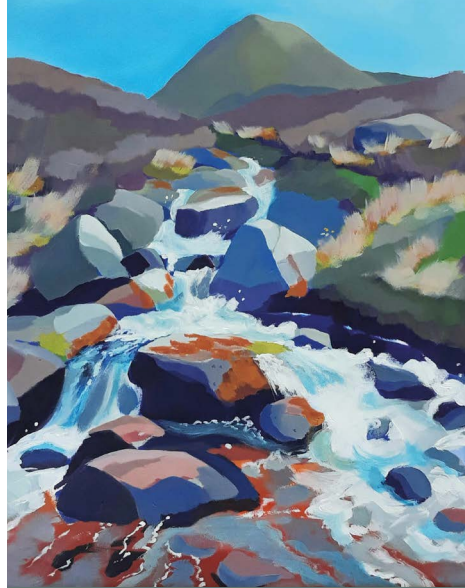


**ABERDEENSHIRE Larks Gallery** in Ballater on Royal Deeside has a range of work by contemporary artist Lois Carson. A graduate of Gray's School of Art, she is pushing the boundaries of her work. [www.larksgallery.com](http://www.larksgallery.com)





NOVEMBER MORAG LLOYDS  
DECEMBER RONA KANT



# Larks Gallery

10-5 MON, THURS, FRI, SAT  
11-5 SUN

10 Braemar Rd, Ballater  
013397 55888

[www.larksgallery.com](http://www.larksgallery.com)



# White Fox Gallery



Vessel Karen Thompson



Cottages up The Yarrow Helen Tabor

## WINTER MIXED EXHIBITION

21 Nov – 22 Dec

51 High Street, Coldstream TD12 4DL. 01890 254 010 or 07980 402 755  
[www.whitefoxgallery.co.uk](http://www.whitefoxgallery.co.uk) info@whitefoxgallery.co.uk  
Tues-Sat 10am-5pm. Wed by appointment.

## amaranthine

the everlasting

Exhibition of paintings by  
**Vibha Pankaj**

**The Dundas Street Gallery**

6 Dundas Street,  
Edinburgh EH3 6HZ

19 - 25 Nov 2020  
11am - 6pm



Further details at  
[www.vibhaartist.com](http://www.vibhaartist.com)



**DUBLIN & ONLINE The Doorway Gallery** has a winter show to round off 2020, boasting a huge variety of original figurative and colourful paintings to choose from, as an ideal gift or a great investment.  
[www.thedoorwaygallery.com](http://www.thedoorwaygallery.com)



**AYR The Maclaurin Gallery** celebrates the creativity of a group of Ayrshire artists and makers, and has wonderful gift ideas, such as Janet Laurie's jewellery, incorporating semi-precious gemstones. [www.themaclaurin.org.uk](http://www.themaclaurin.org.uk)



**EDINBURGH** Encourage a friend to try something creative with a gift voucher for **Leith School of Art**, where the programme includes Weekend Workshops, Day & Evening courses and Summer Schools.  
[www.LeithSchoolofArt.co.uk/gift-vouchers](http://www.LeithSchoolofArt.co.uk/gift-vouchers)



**BORDERS** Among the wide range of works on sale at **Flat Cat Gallery** in Lauder is Standing Hare and Reclining Hare, sculpted in clay by Bernadette Wood, capturing the hares' magical, mystical nature.  
[www.flatcatgallery.co.uk](http://www.flatcatgallery.co.uk)



**PERTSHIRE** This fabulous teapot by David Pantling is available in different patterns from **Frames Gallery** in Perth, from a range which also includes mugs, jugs, toast racks and a butter dish. [www.framesgallery.co.uk](http://www.framesgallery.co.uk)




**GLASGOW & NEWCASTLE** Paintings, prints, cufflinks, cushions and mugs are the perfect gifts to suit every taste and budget, from **Alexander Millar**, at their Glasgow and Newcastle galleries, and at [www.alexandermillar.com](http://www.alexandermillar.com)



**DUNDEE Gallery Q** can fulfil all your art desires with paintings, prints, glass, ceramics and jewellery. They also offer gift vouchers, free postage within the UK, and interest-free payment by instalment with the Own Art scheme. [www.galleryq.co.uk](http://www.galleryq.co.uk)



*Fran Marquis*



Ceramics and tutoring  
New website  
[www.franmarquis.com](http://www.franmarquis.com)

# Scottish Potters

Portrait by Fran Marquis



Within  
A  
Space

31 Oct - 29 Nov 2020  
Online exhibition at [www.scottishpotters.org](http://www.scottishpotters.org)




**EDINBURGH Allium** in South Queensferry has a wide and ever-changing range of original art, ceramics, glass and more by Scottish artists and makers. This silver jewellery (pictured) is made in Allium by 14Ten Designs. [www.alliumqueensferry.com](http://www.alliumqueensferry.com)



**AYR The Maclaurin Gallery** celebrates the creativity of a group of Ayrshire artists and makers, and has wonderful gift ideas, such as Claire Rennie's misty ethereal scenes of Venice. [www.themaclaurin.org.uk](http://www.themaclaurin.org.uk)




**EDINBURGH** The doors are open daily at **Edinburgh Art Shop** or you can shop online for all types of art and craft materials. Gift vouchers, special offers and discounts for students and art groups available. [www.edinburghartshop.co.uk](http://www.edinburghartshop.co.uk)



## Wildlife Art & Sculpture

Robert Greenhalf  
Anthony Theakston  
Matt Underwood

SOC  
Waterston House  
Aberlady  
Thurs-Sun 10-4  
22 Nov - 10 Jan  
[www.the-soc.org.uk](http://www.the-soc.org.uk)



## Cience Studio

Highlands, Islands, Galloway and Cumbria feature at this artist's studio and gallery.

Angela works in a variety of sizes and also presents a wide selection of signed archival prints as well as art gifts and calendars from her Galloway painting.

Paintings, Prints and Commissions.

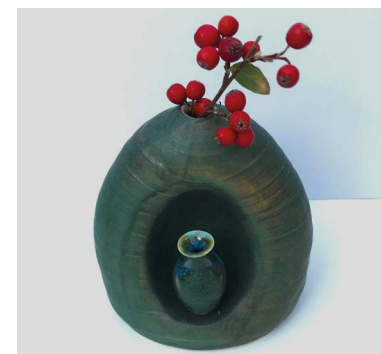
Mon-Sat 10.30-5  
Tues 10.30-4  
By the Clocktower  
212 King Street  
Castle Douglas DG7 1DS  
07902 301 883  
[www.ciencestudio.co.uk](http://www.ciencestudio.co.uk)  
angelalawrenceciencestudio

One household at a time are welcome to drop in or book a time

# Seascape and Landscape Paintings by Angela Lawrence




**ARGYLL & BUTE The Archway Gallery** in Lochgilhead has paintings, prints, ceramics, jewellery and crafts by artists and makers from Scotland and beyond, such as these traditional, hand-crafted figures from Mexico. [www.thearchway.co.uk](http://www.thearchway.co.uk)



**DUNDEE & ANGUS** You can find ceramics by **Fran Marquis** on her new website, available to buy for Christmas and beyond, plus vouchers for pottery lessons in Arbroath to use when classes are possible again. [www.franmarquis.co.uk](http://www.franmarquis.co.uk)



**FIFE & TAYSIDE** With shops in Cupar and Dundee, **Maisie & Mac** stocks prints, jewellery and ceramics as well as work in wood, glass and textiles by UK artists and craftmakers. [www.maisieandmac.com](http://www.maisieandmac.com)



**KINROSS-SHIRE** Beautiful landscapes by **Nichol Wheatley** sell out quickly due to heavy demand. From January he is available for new commissions. [www.nicholwheatley.com](http://www.nicholwheatley.com)



**EDINBURGH** The **Velvet Easel Gallery** in Portobello showcases a wide range of contemporary paintings, glasswork, ceramics and jewellery by local artists and craftmakers to suit all budgets. [www.velveteasel.co.uk](http://www.velveteasel.co.uk)



# Twice gifted

Some people have too much talent.

Not content with making their mark in one field, musicians, actors, comedians, politicians and others have also turned their hand to art. In fact, for many, art or photography was their first calling.

This seems particularly true of music-makers, with the likes of John Lennon, Pete Townshend, Bryan Ferry, Freddie Mercury, Eric Clapton and Joni Mitchell all exploring their creativity initially in art school.

Here we take a look at some of the visual work produced by celebrities known mainly for a different pursuit and ponder what might have been had they taken a different path.



**Billy Connolly** discovered a talent for art later than most, when one cold, rainy day in 2007, while on tour in Montreal, he bought some felt tip pens and a sketchbook and retreated to his hotel room.

He first exhibited in 2012 with the suitably titled *Born on a Rainy Day* collection of pen and ink drawings mainly depicting figures swathed in bandages. Connolly's characters are faceless, anonymous, seemingly devoid of emotion or expression, yet make an emotional connection with the viewer.

The process he uses is similar to that of the Surrealist Automatism movement, whereby the artist allows the hand to move randomly across the paper or canvas without the intent to create anything specific.

Connolly describes his artistic process as something he cannot explain, but which seemingly takes him over as he begins to create. He says: "Art, for me, bears no relation to comedy or music. My art is pure and

In 2002 **Nelson Mandela** revisited Robben Island, where he had been incarcerated for 17 years, in the company of a photographer, who shot images of Mandela's prison cell as well as the guard towers, lighthouse, church, quarry, Table Mountain and other scenes.

Mandela then completed over 20 sketches from the photographs, observed by a young South African art teacher, Varenka Paschke, who guided him through basic composition and colour application.

Mandela himself did not complete any final pieces, but a series of separations which, when overlaid on the strong, black



'unjudged'. I am creating it for myself. It is personal and private, whereas with a film, comedy show or music you expect people to be critiquing, watching, assessing. Art is different. It liberates you."

One of his designs, *Blue Angel*, recently appeared on the wrapper of a limited edition chocolate bar released by the Edinburgh-based artisan chocolatier COCO to raise funds for NHS charities. Pictured: *And on Monday, God Made the World* [www.castlefineart.com](http://www.castlefineart.com)

crayon lines providing the guide, created the final pictures. Sorted in five editions, they symbolised the struggle in South Africa and the triumph over the tyranny of the apartheid years.

Although the subsequent prints depicted places where many suffered, the colourful renderings represented hope prevailing over adversity and brutality and a symbolic link with a reality outside the harsh prison regime. When sold, they raised millions of pounds for the Prince of Wales Charitable Foundation and a series of African children's charities. Pictured: *The Cell*

**Bob Dylan** dates the origins of his work as a visual artist to the early 1960s. A few drawings reached the public gaze with album covers like *Music From Big Pink* (1968) and *Self Portrait* (1970).

In 1974 he studied with Ashcan School tutor Norman Raeben, who emphasised the importance of 'perceptual honesty' – painting life as it as seen, not imagined. Dylan says of Raeben: "He put my mind and my hand and my eye together in a way that allowed me to do consciously what I unconsciously felt."

While on tour between 1989 and 1992, Dylan created a collection of drawings capturing his chance encounters and observations, including portraits, interiors, landscapes, still lifes, nudes and street scenes. They were done, he said, "to relax and refocus a restless mind".



These drawings formed the basis of watercolour and gouache paintings in the 2008 collection *The Drawn Blank Series* – vibrant, expressive works with the same image painted several times in different colours and tones. Later collections include *The Beaten Path*, *Train Tracks*, *Mondo Scripto* and *The Brazil Series*.

Marisha Pessl wrote in the *New York Times*: "Dylan's brush strokes are like his voice: straightforward, rough, occasionally fragile, but always intent on illustrating the treads of human experience...He's not after artistic perfection, but something larger – a moment, a feeling." Pictured: *Vista From Balcony*, 2012 [www.castlefineart.com](http://www.castlefineart.com)



As a teenager, **Leonard Nimoy** developed photographs in his family's bathroom-turned-darkroom. He went on to study at the University of California in Los Angeles in the 1970s under Robert Heineken, later receiving an artist in residence appointment at the American Academy in Rome.

His first book of photography, *Shekhina*, published in 2002, sold out of its first printing in less than a month. Based on the concept in the Kabbalah of the female manifestation of God, it explores the provocative and complex relationship of the

spirit and the flesh.

One critic wrote: 'Nimoy is igniting an artistic debate...over art and censorship that echoes the battles that swirled over Mapplethorpe and other artists like Andres Serrano and Chris Ofili, who created controversial religious imagery.'

Nimoy's photography is included in many museum collections, including the Museum of Fine Arts in Houston, the Los Angeles County Museum of Art and the New Orleans Museum of Fine Art. Pictured: *Shekhina* [www.rmichelson.com](http://www.rmichelson.com) ▶▶▶

A keen watercolourist, **Prince Charles** has depicted many scenes around the Royal homes at Balmoral, Sandringham, Highgrove and Windsor Castle as well as landscapes of favourite places around the world, such as Greece, Switzerland and Arabia. Signed, limited edition lithographs based on his watercolours are sold to raise money for the Prince of Wales Charitable Foundation. Pictured: *Ballochbuie*, *Balmoral* [www.belgraviagallery.com](http://www.belgraviagallery.com)





# ART & CRAFT COLLECTIVE



## FROM ART... TO CRAFT

Original acrylic to oils, glass to gemstones and much more



93 CAUSEWAYSIDE  
EDINBURGH EH9 1QG  
0131 629 9123  
07801 581674  
www.artcraftcollective.co.uk  
OPEN TUESDAY - SUNDAY

# ARTISAN

Mixed Exhibition -  
28 Nov - 10 Jan

Featuring:  
Georgia Allan



13-15 Bank St, Aberfeldy, PH15 2BB | www.artisanand.co.uk  
angela@artisanand.co.uk | 07703 733230 | 01887 822700



Winter 2020

Mixed exhibition with  
featured artist:

Hilke MacIntyre

Gallery Q  
Dundee

www.galleryq.co.uk

Queen's Hotel Buildings, 160 Nethergate, Dundee DD1 4DU

OWN  
ART

01382 220600

## CELEBRITY ARTISTS

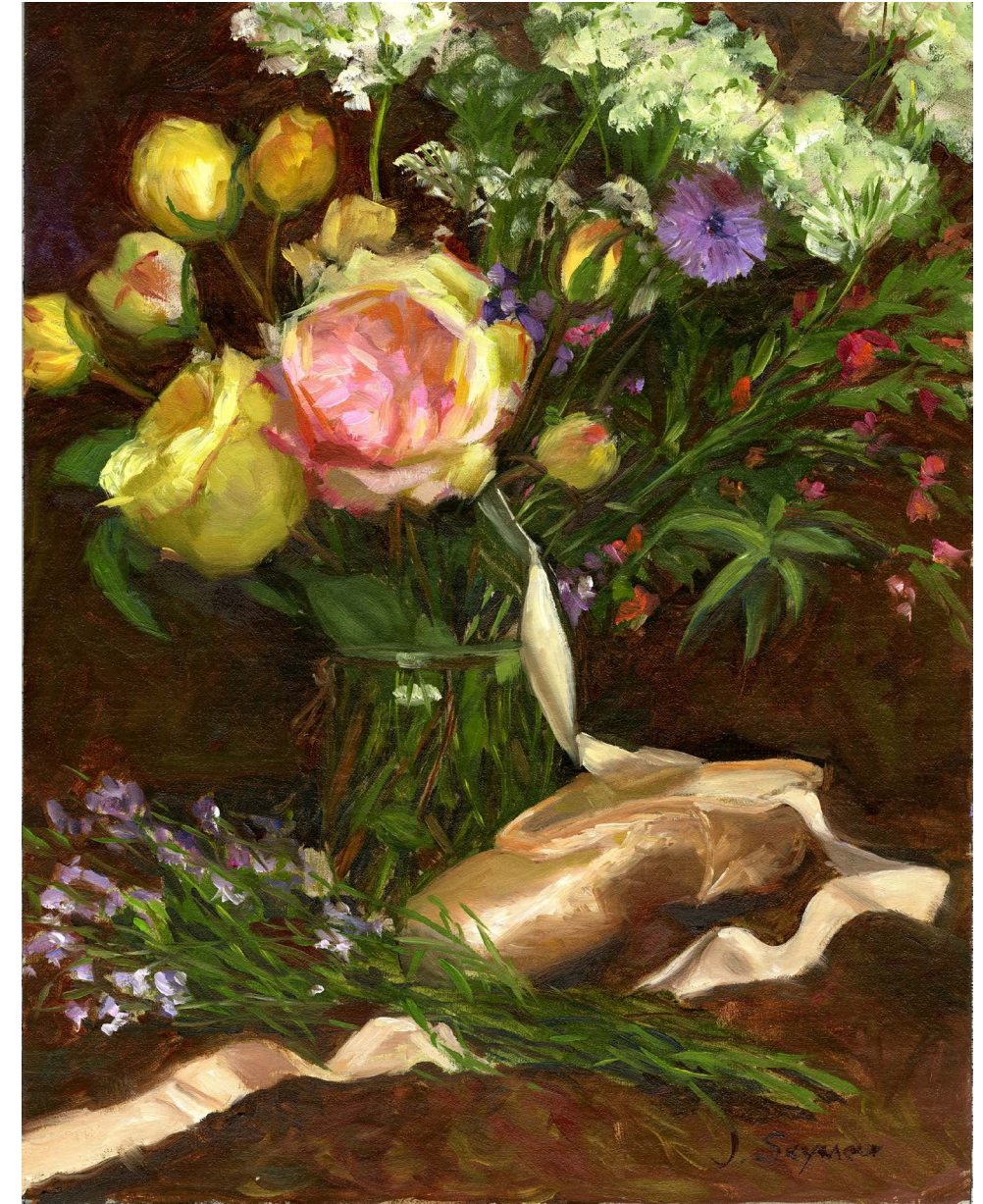
When not acting, **Jane Seymour** can be found in her Malibu studio, producing delicate watercolours, vibrant oil paintings, pastels and bronze sculptures. She has her own gallery in Los Angeles and has exhibited in numerous galleries across North America.

She began painting during a period of personal challenge, her art becoming part of a healing process. She emerged as an accomplished artist, with floral studies, landscapes and portraits of her family as recurring subjects.

Seymour has also created set designs for the Houston Ballet and has been selected three times as an official Olympic artist – for the 2006 Turin Winter Olympics, the 2008 Beijing Summer Olympics and the 2010 Vancouver Winter Olympics. Pictured: *Cinderella's Slipper*, oil  
[www.janeseymour.com](http://www.janeseymour.com)

Rolling Stones guitarist **Ronnie Wood** is the epitome of artist-turned-rock 'n' roller. Having trained at Ealing College of Art, he has continued to pursue these two parallel interests. He has produced landscapes, portraiture and abstract and architectural works in a variety of media, including charcoal, oil, watercolour, spray paint, pastel and acrylic.

He says: "There is no kind of therapy like the one you have from starting and seeing a picture through to the end. Unlike music, it's a solo effort. There's no one else to blame." Wood's paintings often portray band-mates Mick Jagger, Charlie Watts and Keith Richards. Pictured: *On Stage Suite* - Twang  
[www.castlefineart.com](http://www.castlefineart.com)



The actor **Pierce Brosnan** has painted for many years, his abstracts, figurative works and landscapes in acrylic and oil exploding with colour. Self-taught, he does not sell his work privately, but often donates pieces to charity auctions. One of them, a portrait of Bob Dylan, sold for \$1.4 million in 2018 to benefit the amFar Institute for HIV Cure Research.  
[www.piercebrosnan.com/artist](http://www.piercebrosnan.com/artist)



**gallery 27** PICTURE FRAMING & ART  
Dunbar



A Glimpse of Light by Natasha Morton

GALLERY27 offers professional & creative picture framing and showcases an inspiring mix of Scottish artists and makers

Open Mon to Sat 10 - 4 (Sun by appointment)  
8 Spott Rd DUNBAR East Lothian  
www.visitgallery27.com  
07942 676804  
visitgallery27@gmail.com

@visitgallery27

**ART 'N' JOY**  
PICTURE FRAMERS AND GALLERY

ART PRINTS  
FOOTBALL SHIRTS  
MEMORABILIA  
TAPESTRIES

*You name it, we frame it!*



EXPERIENCE  
39 YEARS  
EXPERIENCE

TEL 01294 472 222  
WWW.ARTNJOY.CO.UK  
52 HAMILTON STREET, SALTCOATS KA21 5DS

**CELEBRITY ARTISTS**



Actor **Jeff Bridges** took his first photograph in 1976 on a movie set during the filming of the *King Kong* remake. He says: "Actors often find things to distract themselves between takes, so they don't overthink the work they have to do and are able to relax. Some knit, I take photographs."

He began to use a Widelix camera, explaining: "I love the idea that there is so much information on the negative. Scanning an image might take you from a very quiet, private world on the left, to a very chaotic

and public one on the right. It's a good kind of snapshot camera, which is fine, since I don't try to differentiate between a snapshot and some other kind of photograph. Another reason I like the Widelix format is its similarity to the format you see in the cinema."

Bridges has received an Infinity Award from the International Center for Photography. Pictured: Scene from the set of *True Grit*

Perhaps more cognisant than anyone else in the popular music field of the power of the visual image, **David Bowie**, a product of Bromley School of Art in London, always blended his musical output with a strong art and design element in album artwork and set and costume design.

Often influenced by Surrealism and German Expressionism, he produced paintings, sketches, mixed media constructions and installations and his images have been reproduced on wallpaper, linocut prints and limited edition postcards.

His artwork has been frequently exhibited, including at the Royal College of Art and the Saatchi Gallery in London, the Florence Biennale and the New Expressionist Exhibition in Berlin. Pictured: Self-portrait in the pose adopted for the album cover of the *Heroes* album © The David Bowie Archive 2012



**dockside**  
GALLERY



Hazel Cashmore  
Winter Sea  
01289 302437 | art@docksidegallery.co.uk  
84 Main St, Tweedmouth, Berwick-upon-Tweed TD15 2AA

**WINTER**  
exhibition

6th November 2020  
- 28th February 2021

**THE VELVET EASEL**  
GALLERY

298 Portobello High St | Portobello | Edinburgh, EH15 2AS  
0781 391 6684 | velveteasel.co.uk | art@velveteasel.co.uk

**Allium**  
GALLERY - GIFTS - INTERIORS

Winter Mixed Exhibition  
Friday 6 Nov - early Jan

Showing Scottish artists and makers

4A Hopetoun Road, South Queensferry, EH30 9RA  
0131 319 2140 | www.alliumqueensferry.com  
Wed-Mon 11-4.30 - Appointments outwith these times

Winter Seas Kristin Hoggie

**TORRANCE GALLERY**



Our beautiful Winter Exhibition featuring over 40 gallery artists, plus some very Special Guests...  
21st November to 2nd January 2021

www.torrancegallery.co.uk  
36 Dundas St, Edinburgh, EH3 6JN  
0131 556 6366  
mail@torrancegallery.co.uk





Influenced by the nature around him in rural Galloway, sculptor **Geoff Forrest** works in welding steel and weaving willow to create animals, baskets and organic forms. His 'pebble' basket (pictured) is painted with gesso and sprayed with several coats of acrylic colour before a sealant completes the process. [www.geoffforrest.co.uk](http://www.geoffforrest.co.uk)



Silversmith **Megan Falconer** makes hand-crafted tools, vessels and jewellery using cast rocks from the Scottish landscape, interpreting natural surface decay and erosion onto the soft metal, the texture of which alters through the process to create unique and unexpected finishes. [www.meganfalconer.com](http://www.meganfalconer.com)

# Hand-made

for you & your home



Duncan and Jacqui Grant of **Lava Jewellery** in Aberdeenshire use gold, platinum and diamonds to make a series of collections inspired mainly by the Scottish landscape. This pendant (pictured) is from their recent Rockpool collection based on the coastal rock formations near Stonehaven. They also have a selection of Burns-themed pieces. [www.lavajewellery.co.uk](http://www.lavajewellery.co.uk)



Ceramicist Clare Dawdry of **We Make Pots** makes bowls, mugs, vases and jugs which combine form and functionality. Decoration is quietly evocative of the landscapes and seascapes of Dumfries and Galloway. They sport a variety of matt and shiny surfaces and subtle colour changes achieved through layering glazes and often multiple firings. [www.wemakepots.com](http://www.wemakepots.com)



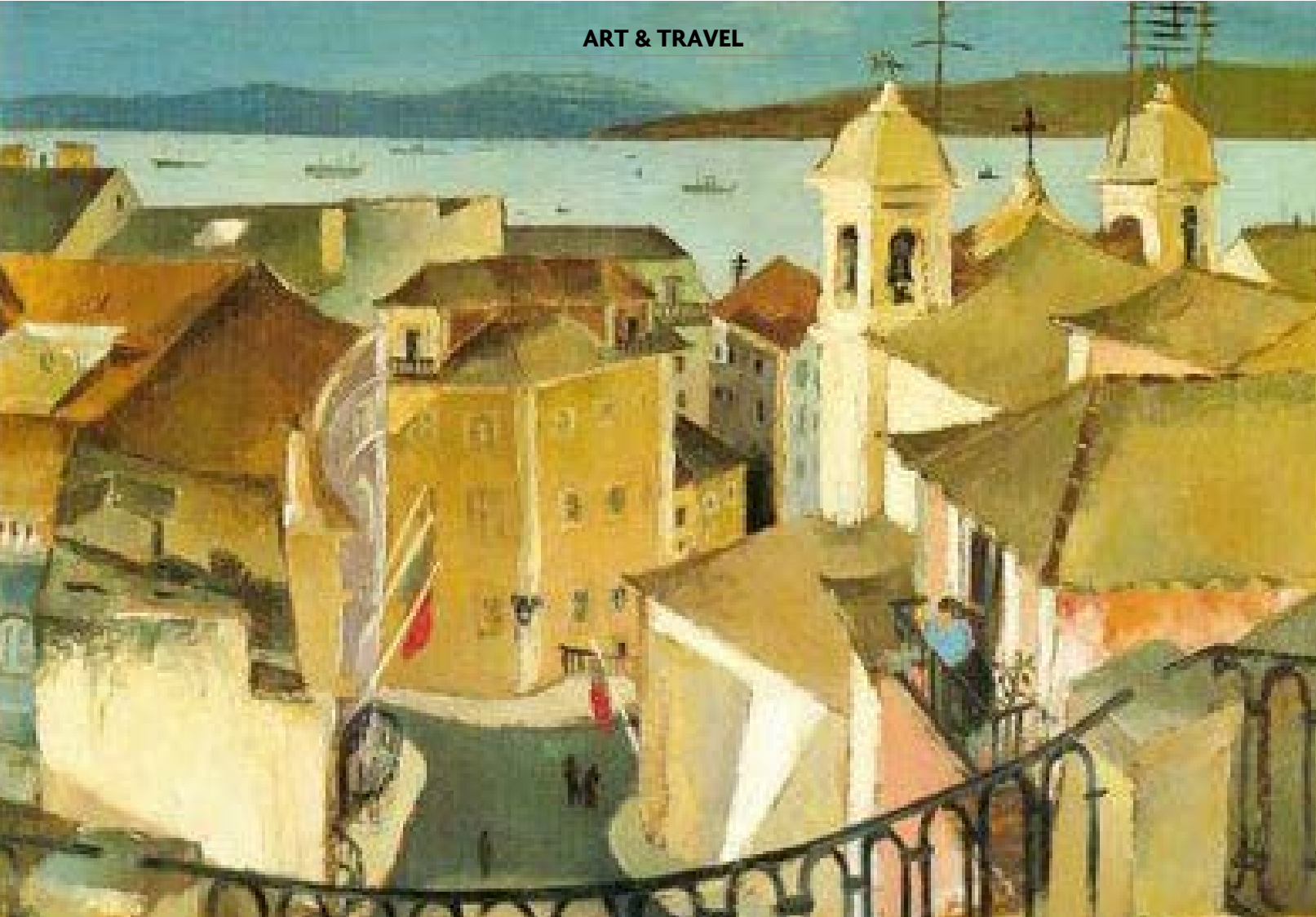
Hungarian-born textile artist **Edina Széles**, now based in the Shetland Islands, works with constructed textiles and traditional techniques to create hand-woven artworks such as her Black series of wall-hangings using natural black Shetland and Icelandic wool (pictured) and her Abandoned Crofthouse felted works inspired by old ruins. [www.edinaszeles.com](http://www.edinaszeles.com)



Paper artist **Anna Cook** makes remarkably intricate scenes which capture the personality of birds and animals and depict them in their natural habitat. The pieces are created by cutting

into single layers of tonal paper before moulding and sculpting the design and mounting them onto deep box frames. [www.annacookpaperart.co.uk](http://www.annacookpaperart.co.uk)





Carlos Botelho (1889-1992), *Lisbon and the Tagus, Sunday, 1935*, oil on wood (Museu Nacional de Arte Contemporanea)

Lisbon is one of Europe's best value destinations for art-lovers.

# Affordable Art

city centre.

Lisbon is the oldest city in Western Europe and the second oldest capital on the continent after Athens. Europe's only coastal capital, its historic port sits at the mouth of the river Tagus from which the city spreads out over a series of hills. While a massive earthquake in 1755 devastated three quarters of the city, it still has plenty of old world charm.

Lisbon also boasts world class museums showing virtually the entire spectrum of artistic output from antiquity to the present day. Many of the public and private collections are housed in former palaces and convents which would be worth a visit even without their museum displays.

In its sleek complex overlooking the beautifully landscaped Parque Santa Gertrudes, the **Museu Calouste Gulbenkian** is named after the Turkish-born oil magnate and one of the 20th century's wealthiest men, who over four decades amassed one of the world's finest private collections. The



Centro de Arte Moderna

6,000 pieces (he called them his "children") date from antiquity to the early 20th century and include examples from Egypt, Greece, Babylonia, Persia, the Islamic Orient, Europe, China and Japan.

Gulbenkian's dream of a museum to house his collection took over 30 years to realise. As early as 1937 he started discussions about a "Gulbenkian Institute" at the National Gallery in London. After a diplomatic spat with the British Government during WWII (he had followed the French Government to Vichy as a member of the Persian diplomatic delegation and was named an "enemy under the act", a status which was later revoked), he then considered the National Gallery of Art in Washington.

Gulbenkian eventually settled in Lisbon, where he remained until his death. The entire collection was brought to Portugal and in 1969 his wish to see it housed under one roof was fulfilled with the opening of the specially built museum.

The permanent exhibition galleries are laid out in chronological and geographical order to create two circuits. The first showcases classical and Oriental art (the latter Gulbenkian's special interest), including ceramics, coins, vessels, tapestries, furniture, illustrated manuscripts and sculpture, while the second covers European art in a stupendous display of paintings by giants such as Rembrandt, Rubens, van Dyck, Renoir, Gainsborough, Turner, Rousseau, Monet, Sargent, Degas, Corot and Manet.

French art and decorative arts are particularly prominent, reflecting Gulbenkian's lengthy residence in Paris and

including Regency furniture and Beauvais, Aubusson and Gobelins tapestries. Both sections end in a room devoted to Art Nouveau, including a collection of jewellery and glass by René Lalique.

[www.museu.gulbenkian.pt](http://www.museu.gulbenkian.pt)

On the other side of the park – you'll pass a Henry Moore sculpture in the garden on the way over – is the **Centro de Arte Moderna (CAM)**, also run by the Gulbenkian Foundation. You can buy a joint ticket to visit both. CAM's permanent exhibition includes drawing, painting, sculpture and installation, with a special focus on Portuguese art produced in the first decades of the 20th century.

The display changes annually to showcase a selection of works from the museum's collection of around 9,000 pieces. This is complemented by an annual temporary exhibition of works by Portuguese and international artists.

A highlight is the largest existing collection of work by Amadeo de Souza-Cardoso, who produced an extraordinary body of work of various genres at



Museu Nacional de Arte Antiga

breakneck speed until his early death of pneumonia aged 30, when his career was at its height. There are also works by British artists such as David Hockney and Anthony Gormley. [www.cam.gulbenkian.pt](http://www.cam.gulbenkian.pt)

Jump on the No.15 tram to the Belem district in the western part of the city, where across the street from the massive Jeronimos Monastery (a UNESCO World Heritage Site) and next to the Praca do Imperio (Empire Square) with its impressive fountain, you'll find the Belem Cultural Centre, Portugal's largest cultural building.

A modern take on a medieval 'castillo' made of huge sandstone blocks, this sprawling complex is home to the **Berardo Museum** and one of the world's most acclaimed collections of modern and contemporary art rivalling anything in New York, London or Paris. ▶▶▶

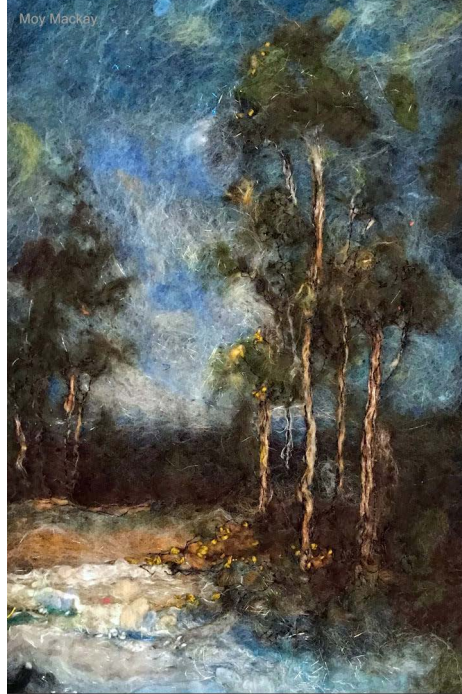


Museu Calouste Gulbenkian



## MOY MACKAY GALLERY

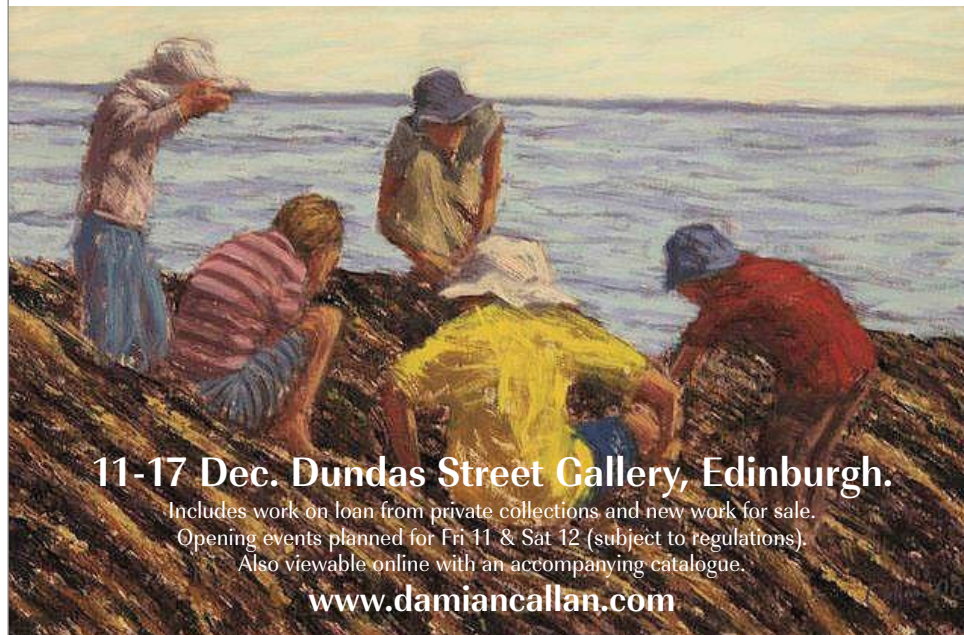
17 NORTHGATE, PEEBLES t. 01721 722116



For current exhibition information:  
[www.moymackaygallery.com](http://www.moymackaygallery.com)

## Callan at 60

A retrospective of work from the past 25 years and brand new work from 2020



11-17 Dec. Dundas Street Gallery, Edinburgh.

Includes work on loan from private collections and new work for sale.  
 Opening events planned for Fri 11 & Sat 12 (subject to regulations).  
 Also viewable online with an accompanying catalogue.

[www.damiancallan.com](http://www.damiancallan.com)

Graeme Wilcox | Night Cycle

FIDRA FINE ART  
ONLY HUMAN

Jackie Anderson, Jennifer Anderson,  
 Henry Jabbour, Angela Repping  
 & Graeme Wilcox  
 with sculpture from Alejandro Lopez

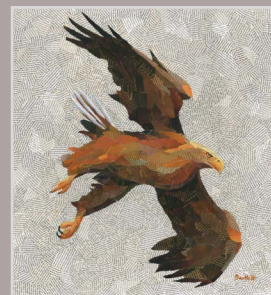
31 OCTOBER TO 29 NOVEMBER 2020

7-8 Stanley Road, Gullane EH31 2AD  
 t: 01620 249389 | e: [info@fidrafineart.co.uk](mailto:info@fidrafineart.co.uk)  
[www.fidrafineart.co.uk](http://www.fidrafineart.co.uk)

## aberfeldygallery

 MIXED EXHIBITION  
 19 Nov - 20 Dec


Margaret Evans (cropped image)



Paul Bartlett

Contemporary art by established  
 and emerging Scottish artists.  
 Large variety of landscape and  
 wildlife art - ranging from  
 representational to  
 impressionistic - and a good  
 selection of Perthshire scenes.

FREE UK DELIVERY

[aberrfeldygallery.co.uk](http://aberrfeldygallery.co.uk)

9 Kenmore Street, Aberfeldy, PH15 2BL  
 01887 829129  
[hello@aberrfeldygallery.co.uk](mailto:hello@aberrfeldygallery.co.uk)



The achievement of Madeira-born  
 businessman Jose Manuel Rodrigues Berardo,  
 the eye-popping collection comprises over  
 900 works representing dozens of artistic  
 movements. A list of the artists reads like  
 a Who's Who of modern art, including  
 Warhol, Picasso, Dali, Duchamp, Magritte,  
 Modigliani, Miro, Bacon, Pollock, Koons  
 and many more – over 170 in all. Strolling  
 through the Berardo is like taking a walk  
 through the history of 20th century art.  
**[en.museuberardo.pt](http://en.museuberardo.pt)** (Tip: After your visit,  
 cross the street to Pasteis de Belem, named  
 after the custard-filled pastries served warm  
 and oven fresh in this legendary Lisbon cafe  
 dating from 1837 and decorated with its  
 original wall tiling.)

A stone's throw from the magnificent  
 triumphal arch leading to the Praça do  
 Comercio (Commerce Square) and the  
 waterfront, the **Museu do Design e da  
 Moda**, or MUDE (which also means 'change'  
 in Portuguese) is one of the world's leading  
 museums of 20th century design and  
 fashion.

Located in a former bank building  
 stripped down to bare walls, concrete floor  
 and supporting pillars so as to better focus  
 attention on the collection of over 2,500  
 objects, the museum traces the history of  
 design from the 1930s to the present in  
 furniture, electrical appliances, glassware and  
 other household objects, many of which are  
 now so everyday that their revolutionary  
 design and function are hardly considered.  
 (Think Post-Its.) In all, there are works by  
 some 230 designers responsible for starting  
 worldwide trends, including icons such

as Philippe Starck,  
 Charles Eames, Gerrit  
 Rietveld and Arne  
 Jacobsen.

The museum  
 also holds  
 Portuguese  
 businessman  
 Francisco Capelo's  
 fashion collection  
 of some 1,200  
 couture pieces by  
 famous names such  
 as Jean Paul Gaultier,  
 Vivienne Westwood,  
 Yves Saint Laurent and Christian Dior.

Do not miss the beautiful mosaic  
 from 1962 between the ground floor and  
 the lower level left over from the Banco  
 Nacional Ultramarino days. **[www.mude.pt](http://www.mude.pt)**

For an excellent overview of Portuguese  
 art from 1850 to 1975, head for the **Museu  
 Nacional de Arte Contemporanea** (MNAC),  
 which houses the country's most important  
 collection of state-owned modern and  
 contemporary art. The permanent exhibition  
 includes works by Portugal's greatest artists,  
 such as Veloso Salgado, Silva Porto (dubbed  
 "the divine master"), Carlos Reis, Sousa  
 Lopes, Jose Malhao, Aurelia de Sousa and  
 Antonio Carneiro.

The building stands on the site of a  
 former monastery which was later used as a  
 biscuit factory, and the temporary exhibition  
 space, the Sala dos Fornos (Oven Room), is  
 named after the brick ovens which still line  
 the corridor outside it. The vaulted brick  
 ceiling in the reception area recalls both its  
 monastic and industrial past, while the rest  
 of the modern refurb relies heavily on stone,  
 metal and wood.

Limited exhibition space restricts the  
 display to around a hundred works at a time  
 from a collection of over 5,000 pieces. These  
 are arranged by chronology and artistic  
 movement, starting in the late 1870s, when  
 the first Portuguese painters supported  
 by the state to study in France returned  
 home, bringing with them the new trend of  
 capturing the light and climatic features of  
 landscapes in open air painting. The visitor  
 is then taken on a crash course through the  
 last century of Portuguese art. There is also

a sculpture garden featuring 19th and 20th  
 century bronze works.

**[www.museuartecontemporanea.pt](http://www.museuartecontemporanea.pt)**

Housed in a 17th century palace with an  
 extension in the former convent of Santo  
 Alberto, the **Museu Nacional de Arte  
 Antiga** (MNAA, or National Gallery of  
 Ancient Art) houses a vast collection of  
 European art and artefacts from the Middle  
 Ages to the 19th century, including painting,  
 sculpture, metalwork, ceramics, textiles,  
 furniture, drawings and other decorative arts.

The many highlights include: an  
 astonishing gold silver table centrepiece  
 belonging to King Jose I (1750-77); a  
 monstrosity reportedly created out of gold  
 brought back to Portugal from East Africa  
 by the famous admiral and explorer Vasco  
 da Gama; and, perhaps most famously, the  
 15th century Saint Vincent Panels attributed  
 to Nuno Gonçalves. Featuring 60 people  
 from all levels of late medieval Portuguese



Berardo Museum

society venerating Saint Vincent, the patron  
 saint of Lisbon, it is one of the first collective  
 portraits in European art.

Also known as the Museu das Janelas  
 Verdes, or Green Windows Museum (and  
 located in Green Windows Street), the  
 MNAA also has a selection of European  
 paintings by, among others, Hieronymus  
 Bosch, Pieter Bruegel the Younger, Albrecht  
 Dürer, Lucas Cranach, Piero della Francesca,  
 Holbein, Raphael, Tintoretto, van Dyck and  
 Velazquez. **[www.museudearteantiga.pt](http://www.museudearteantiga.pt)**  
 (Tip: After your visit relax in Le Chat, a glass-  
 walled cafe-bar next door with sweeping  
 views over the 25th of April Bridge – a dead  
 ringer for San Francisco's Golden Gate Bridge  
 – and the comings and goings on the river.)

 FURTHER INFO: **[www.visitlisboa.com](http://www.visitlisboa.com)**



# MILTON ART GALLERY



Festive Window – Catherine Imhof Cardinal

A warm inviting independent gallery offering a wide range of Scottish artists, designers and makers.

## New Autumn works

Catherine Imhof Cardinal  
Pete Morrison  
Sarah Koetsier



Sarah Koetsier

Mon-Sat 10.30-4.30, Sun 11-4.30

Milton of Crathes, Banchory AB31 5QH  
info@miltonart.com 01330 844664  
www.miltonart.com



Tide, Sunna – Pete Morrison

# FRAMES GALLERY



Golden Moon, screenprint by Anne Skinner

## Winter 2020 Mixed Exhibition

21st November—30th January

paintings, printmaking, ceramics, jewellery and glasswork

10 Victoria Street Perth PH2 8LW | framesgallery.co.uk | info@framesgallery.co.uk | 01738631085

# Goldfinch Gallery

COMRIE

## Winter Exhibition

Nov 28 - Jan 31st  
Drummond Street, Comrie, Perthshire, PH6 2DS  
Ann Wegmüller RSW RWS  
Info@goldfinchgallery.co.uk

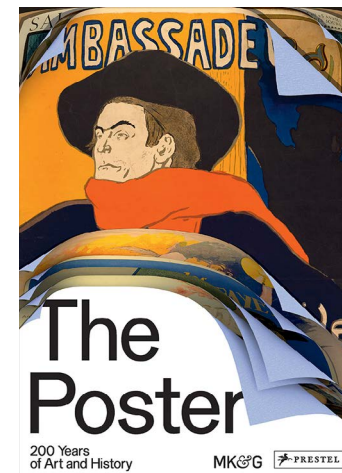
## ART BOOKS



**After the Final Curtain: America's Abandoned Theaters, by Matt Lambros, pub. Jonglez Publishing** In the early 20th century the streets of towns and cities across America were lined with movie theatres. The most opulent, known as

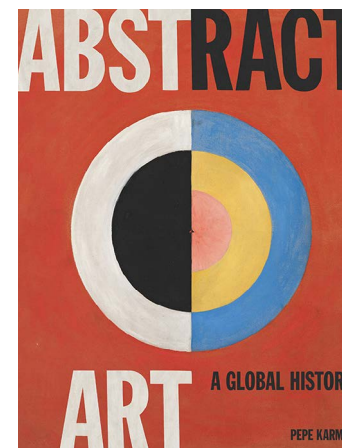
“movie palaces”, were designed to make their patrons feel like royalty and people would dress up for a night out. But the advent of TV changed viewing habits and it became harder to fill 2,000-plus seats, forcing many theatres to close. Architectural photographer Matt

Lambros has captured the faded beauty of buildings once alive with music, laughter and drama which now stand silent and still, slowly surrendering to neglect and decay.



## The Poster – 200 Years of Art and History, ed. Jürgen Döring, pub. Prestel

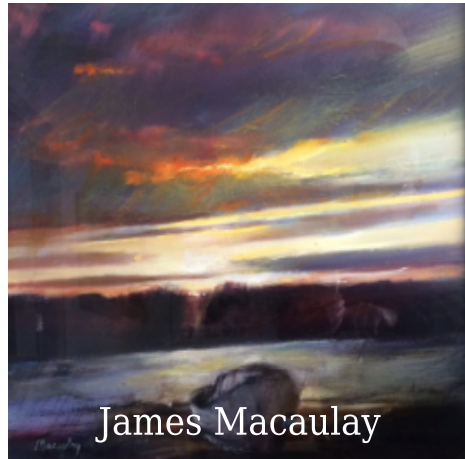
This stunningly illustrated book examines poster design and its relation to the arts and broader culture. Featuring 480 illustrations by over 200 artists, this expansive overview explores the use of posters as a versatile advertising tool from the early 19th century onwards, often incorporating the style of leading art movements with contributions from artists such as Alphonse Mucha, Egon Schiele, Pablo Picasso and Andy Warhol. A great dip in/dip out reference book of an art genre which pervades our everyday lives.



**Abstract Art – A Global History, by Pepe Karmel, pub. Thames & Hudson** Beginning with his exploration of the origins and evolution of the genre with the assertion that ‘Abstract art is always rooted in experience of the real world’, art historian Pepe Karmel takes us beyond the traditional histories of abstraction as a sequence of ‘isms’ with less interest in how it relates to the real world and also beyond the core group of European and North American artists who usually dominate the topic. Instead, Karmel shows how artists around the world have used abstract imagery to convey personal, social and political experience.







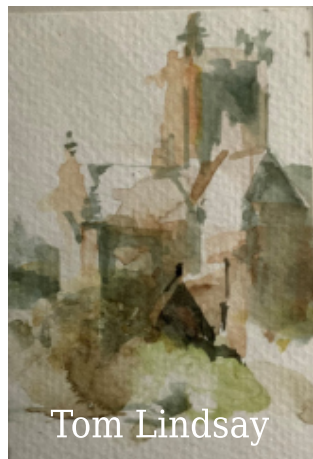
James Macaulay

Old Friends  
17th OCT - 28th NOV



HB Hugh Bryden

View by appointment  
ottersburngallery.com



Tom Lindsay

Ottersburn Gallery  
Contemporary fine art and picture framing gallery

## Marta Utsler

ABSTRACT PAINTER



Dual Narratives Part 1



Dual Narratives Part 2

www.martautsler.com  
martautsler@gmail.com 07758 335417

## Winter Exhibition at the Archway

Artists include: Caroline Hunter, Victoria Maxwell Macdonald, John Lowrie Morrison, Christine Russell, Louise Oppenheimer, Scott Macdonald, Penelope Timmis.  
Ceramics by Jane Adams, Christine Cummings.  
Jewellery by Helen Shere, Margaret Ker



Barbel Skiffis Scott Macdonald



Garden Fern Collection Leanne Adams



Wild Swimmer Jane Adams



Evening Smoke The Old Lily Pond Canal Canal Jolomo

### The Archway Gallery

7 Union Street, Lochgilhead, Argyll PA31 8JS | 01546 606894  
www.thearchway.co.uk



# Missing Masterpieces

In a new project by the Samsung electronics company, art-lovers and amateur detectives are invited to share any tips, theories or clues they can find in online media reports, blogs or social media using the hashtag #MissingMasterpieces. Further info: [www.samsung.com/uk/explore/entertainment/missing-masterpieces-and-lost-art-on-the-frame](http://www.samsung.com/uk/explore/entertainment/missing-masterpieces-and-lost-art-on-the-frame)

### Vincent van Gogh

*The Parsonage Garden at Nuenen in Spring* (1884)

This view of the back garden of his father's parsonage is one of Van Gogh's earliest works. The church in the distance has now been demolished, while the parsonage and garden still survive in Nuenen near Eindhoven. The painting was stolen in a smash and grab from the Singer Laren Museum in the Netherlands on March 30, 2020 – Van Gogh's birthday.



### Vincent van Gogh

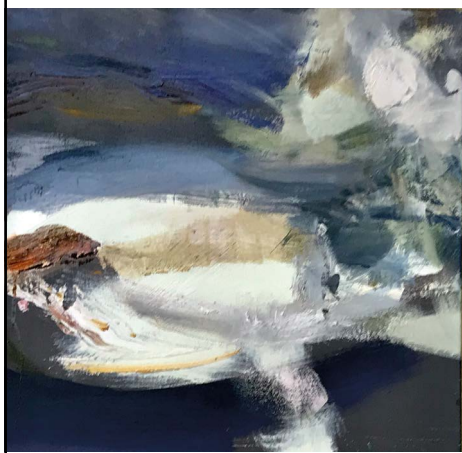
*Portrait of Dr Gachet* (1840)

Dr Gachet worked in the sanatorium into which Van Gogh admitted himself after a mental breakdown when he mutilated his ear. Doctor and artist shared a close resemblance. In 1990 the Japanese businessman Ryohei Saito bought the painting for \$82.5 million, later wishing to be cremated with it when he died. It is now believed to be in a private Swiss collection.



THE QUAY GALLERY

Open daily until Christmas  
11am - 5pm



33 High Street, Aberdour, Fife  
01383 860602  
[www.thequaygallery.co.uk](http://www.thequaygallery.co.uk)

Ian Leckward Spring Storm across the West Sands

SPROSON GALLERY & FRAMER ST ANDREWS

Now introducing  
**A Scottish Autumnal Collection**

A contemporary art gallery in St Andrews

Tues-Sat 10am-5pm.  
Closed Sun & Mon

138 South Street  
St Andrews, KY16 9EQ  
01334 474331  
[info@sprosongallery.com](mailto:info@sprosongallery.com)  
[www.sprosongallery.com](http://www.sprosongallery.com)  
f sprosongallery

HIGH ST. GALLERY  
ART & ANTIQUES



Rare Losol Ware Art Deco Bowl



'Low Tide Harbour' by Davy Brown

Open by appointment. Tel: 07807 235 196  
84 High Street Kirkcudbright DG6 4JL  
[contact@highstgallery.co.uk](mailto:contact@highstgallery.co.uk) [www.highstgallery.co.uk](http://www.highstgallery.co.uk)

LOST ART



**Jean Baptiste Oudry**

*White Duck* (1753)

Oudry was the court painter to Louis XV of France. This still life was stolen from the collection of the Marquess of Cholmondeley at Houghton Hall in Norfolk in 1992. Some investigators believe it was passed into the hands of a gypsy gang based in the region and a former police informer claimed that the painting was hidden in the attic of a remote, derelict house in the Northumberland moors.



**Paul Cézanne**

*View of Auvers-sur-Oise* (c.1879-80)

This study of a cluster of rural houses shows Cézanne's ability to bend perspective for dramatic effect. Burglars took advantage of New Year's Eve 1999 festivities to steal the painting in cat burglar style from the Ashmolean Museum in Oxford by climbing adjacent scaffolding, smashing a skylight, dropping a rope ladder down and shielding their path with a smoke bomb. They brought a portable fan to blow the smoke and obscure themselves from CCTV cameras. The alarms rang, but the smoke led security staff to think it was a fire, so they called the fire brigade rather than intervene, giving the thieves time to escape.



**William Blake**

*Last Judgement* (1808)

The multi-talented mystic of British art, Blake was a brilliant painter, publisher and poet. Inspired by Michelangelo's fresco in the Sistine Chapel, this lost painting shows the dead rising to be sent eternally to Heaven or Hell – one of the many "visions" Blake claimed to have which were manifested in his work. The figures would likely have been vibrantly coloured, but the exhibition for which it was planned was cancelled and the painting was lost with many other works.



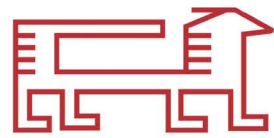
**Claude Monet**

*Charing Cross Bridge and Waterloo Bridge* (1899-1904)

Fascinated with how light affects and alters his subjects, Monet painted dozens of versions of both of these, each with subtle differences, two of which were stolen in October 2012 from the Kunsthall in Rotterdam. The mother of one of the thieves convicted claimed that she burned *Waterloo Bridge* in her stove in Romania in an attempt to destroy evidence against her son. Police did find traces of pigment, but not enough to verify her claims.



WWW.NOMADSTENT.CO.UK



THE  
**NOMADSTENT**  
A WAREHOUSE OF TRIBAL ART

**RUGS & INTERIORS  
DECORATIONS & GIFTS**



**ONLINE & IN STORE**

Tues-Sat 10-5, Sun 12-4  
21 St Leonard's Lane, EH8 9SH  
info@nomadstent.co.uk, 0131 662 1612

TATHA  
GALLERY

# Bring in the Light

tathagallery.com  
Mixed Winter Exhibition 2020  
14 Nov–24 Dec

## WINTER EXHIBITION

ONLINE FROM 5TH NOVEMBER, EXHIBITION OPENS 7TH NOVEMBER  
WWW.WHITEHOUSEGALLERY.CO.UK



**LOST ART**

**David Teniers the Younger**

*Summer* (c. 1644)

In this painting from a series of Allegories of the Four Seasons by the Dutch artist best known for painting bawdy tavern scenes, workers are harvesting wheat on a hot day. Teniers painted several versions of the series and one version of *Summer* was stolen from the Museu Nacional de Arte Antiga in Lisbon in 1974.

**József Lampérth Neme**

*Landscape* (1917)

This painting by the avant-garde Hungarian artist went missing from a storage warehouse belonging to the MODEM Center for Modern and Contemporary Art in Debrecen, Hungary. Archives and warehouses are popular targets with thieves, as it might be months before anyone notices something is missing. However, works in storage require specialised knowledge to locate, so a theft like this suggests an 'inside job'. ▶▶



**FLAT CAT  
GALLERY**  
and cafe

### WINTER EXHIBITION

A wonderful selection of work by Artists, Print-makers, Ceramicists, Jewellers and more

All work for sale online.  
Gift shop and café/takeaway service.  
Mon-Sat 9.30-5, Sun 10-5. Closed Tues-Wed  
www.flatcatgallery.co.uk  
2 Market Place, Lauder, Berwickshire TD2 6SR  
01578 722 808

**dandelion designs**  
Stein Isle of Skye 01470592218 dandelion-designs.co.uk

**Basking Seals** Liz Myhill

**Tidal Pool** Cathy Myhill

**PACK SEND**

**SPECIALIST SHIPPERS OF FINE ART & ANTIQUES**

- Fragile, large or awkward – wherever in the world it needs to go
- Affordable, customised crates that deliver art works safely
- International & UK delivery services
- Cover against loss or damage

**0131 201 2244**  
53 Elm Row, Leith Walk, Edinburgh EH7 4AH  
www.packsend.co.uk/edinburgeast



WEEKLY ONLINE EXHIBITIONS SERIES



**EITHNE ROBERTS**  
Nov 9-15



**ALISON DICKSON**  
Nov 16-22



**David Ryan**  
Nov 23-29



[www.thedoorwaygallery.com](http://www.thedoorwaygallery.com)

VIEW THE ARTIST STUDIO AND HEAR WHAT THEY HAVE TO SAY

**GALLERY 2**

**Jason Michael Bentley**

American painter living in Scotland  
Painting, drawing & fine art portraiture



Offering a complete range of mouldings, original art, limited editions and unique gifts. Plus contract picture framing for hotels, pubs and restaurants.

9-5 Mon-Fri, 9-3 Sat

72 John Finnie Street, Kilmarnock  
01563 550 303 | [Gallery2Kilmarnock](http://Gallery2Kilmarnock)  
[www.gallery2kilmarnock.co.uk](http://www.gallery2kilmarnock.co.uk)

**Maisie & Mac**  
Gifts, Art & Contemporary Craft



prints . ceramics . textiles . paintings  
metalwork . woodwork . glass . clocks  
cards . kits . jewellery . lights . throws

1 St. Catherine St., Cupar, Fife, KY15 4LS  
2 High St., Dundee, DD1 1SX  
[www.maisieandmac.com](http://www.maisieandmac.com)

**LOST ART**



**Jacob Jordaens**

*A Mythological Scene with a Young Bacchus* (1640)

This masterpiece by the Dutch Old Master was one of thousands looted from Poland during WWII. The painting shows the great influence of Rubens, a generation older than Jordaens and also from Antwerp. Bacchus, the Roman god of agriculture, wine and fertility, is shown as a young child surrounded by female nymphs and satyrs (half-man, half-goat creatures). Poland's rich cultural heritage collections were decimated by both the Nazis and the Russian Red Army. This work was taken from the J.K. Bartoszewicz Museum of History and Art in Lodz.

**Barbora Kyslikova**

*Chloe & Emma* (2013)

Soon after the Czech painter moved to Oslo, two of her most important artworks were stolen. She made a documentary, *The Painter and the Thief*, which premiered at the 2020 Sundance Film Festival and told the true story of how she traced and developed an unlikely friendship with a young man who stole her paintings. Since her oversized, photorealistic works had a limited audience beyond Norway until the film was seen, the theft was more likely an act of passion rather than an attempt at profit. (Most thieves know nothing about the art they take, only seeing it as a portable, high value commodity.) This case is also unusual in that the apprehended thieves claim not to remember anything or what they did with the paintings, since they were so "incapacitated" at the time.

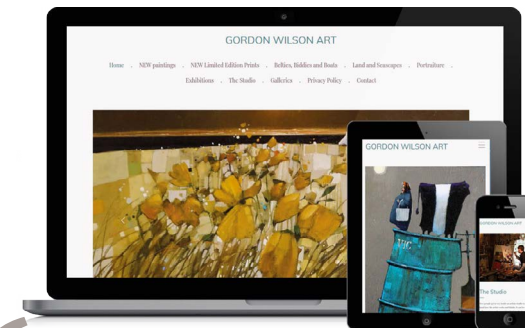


**SHOP ONLINE**  
FOR CLICK & COLLECT  
OR DELIVERIES  
**SHOP INSTORE!**  
DISCOUNTS FOR STUDENTS,  
ART CLUB & GROUP MEMBERS  
REGULAR UPDATES ON INSTAGRAM, FACEBOOK & OUR WEBSITE  
[www.EdinburghArtShop.com](http://www.EdinburghArtShop.com)

**EDINBURGH ART SHOP**

**ArtLook**  
SOFTWARE & WEBSITES FOR ARTISTS & GALLERIES

Prices from  
**£5 PER MONTH**



Easy to set up, easy to manage and with full support along the way from the UK's specialist supplier of software and websites for the visual arts.

- Fully mobile friendly websites
- Multiple layouts and style options
- E-commerce ready
- State of the art cataloguing and sales tools included
- No additional hosting charges
- Optional 'Express' service available – your site set up for you and ready to manage

Try the system and create your own website **completely free** for 30 days with no obligation.

We're proud to be the choice of artists and galleries throughout Scotland

*I have been loving doing the website – it's fabulously straightforward once you get started. Thanks for your initial help, we're delighted with how the final site looks.*

**GORDON WILSON**  
[www.gordonwilsonart.co.uk](http://www.gordonwilsonart.co.uk)

Learn more on our website at  
[www.artlooksoftware.com](http://www.artlooksoftware.com)  
[hello@artlooksoftware.com](mailto:hello@artlooksoftware.com)  
or call on 0117 920 0025